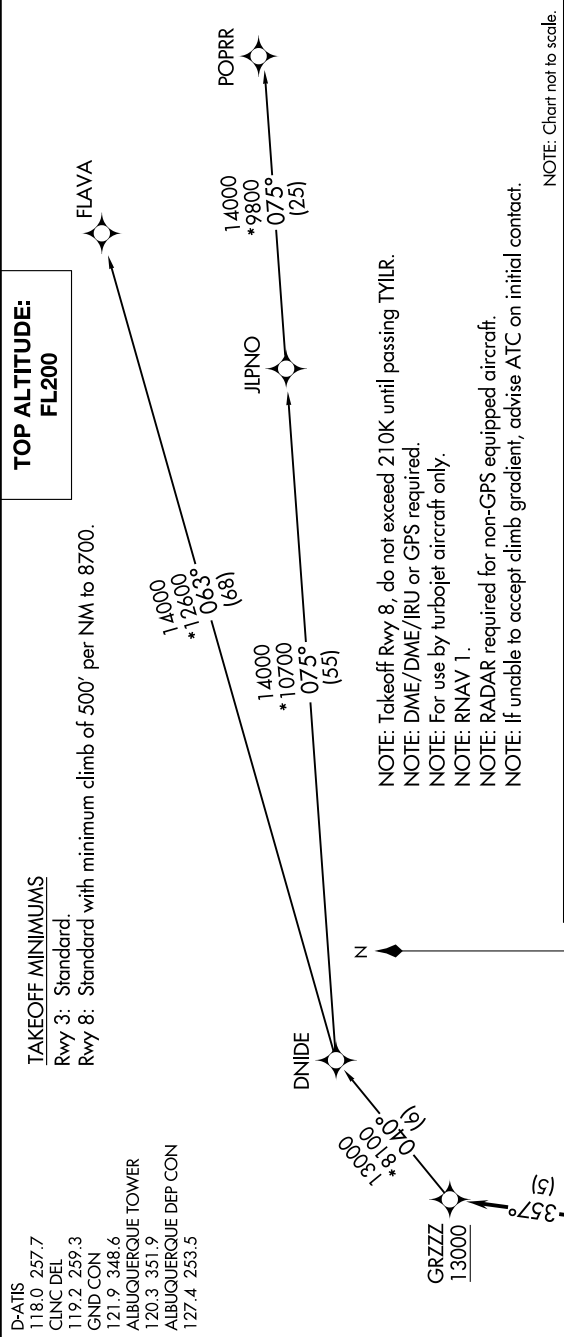


SW-1, 07 AUG 2025 to 04 SEP 2025



NOTE: Chart not to scale.

DEPARTURE ROUTE DESCRIPTION

- TAKEOFF RUNWAY 3:** Climb on heading 034° to 5860, then left turn direct ROWHO, then on track 357° to cross GRZZZ at or above 13000, thence . . . .
- TAKEOFF RUNWAY 8:** Climb on heading 079° to 5860 and direct TYLR at or above 5900, then left turn direct ROWHO, then on track 357° to cross GRZZZ at or above 13000, thence . . . .
- . . . . (transition). Maintain FL200, expect filed altitude ten minutes after departure.
- FLAVA TRANSITION (GRZZZ4.FLAVA)
- JLPNO TRANSITION (GRZZZ4.JLPNO)
- POPRR TRANSITION (GRZZZ4.POPRR)

SW-1, 07 AUG 2025 to 04 SEP 2025