

D-ATIS

118.0 257.7

CLINC DEL

119.2 259.3

CPDLC

GND CON

121 9 348 6

ALBUQUERQUE TOWER

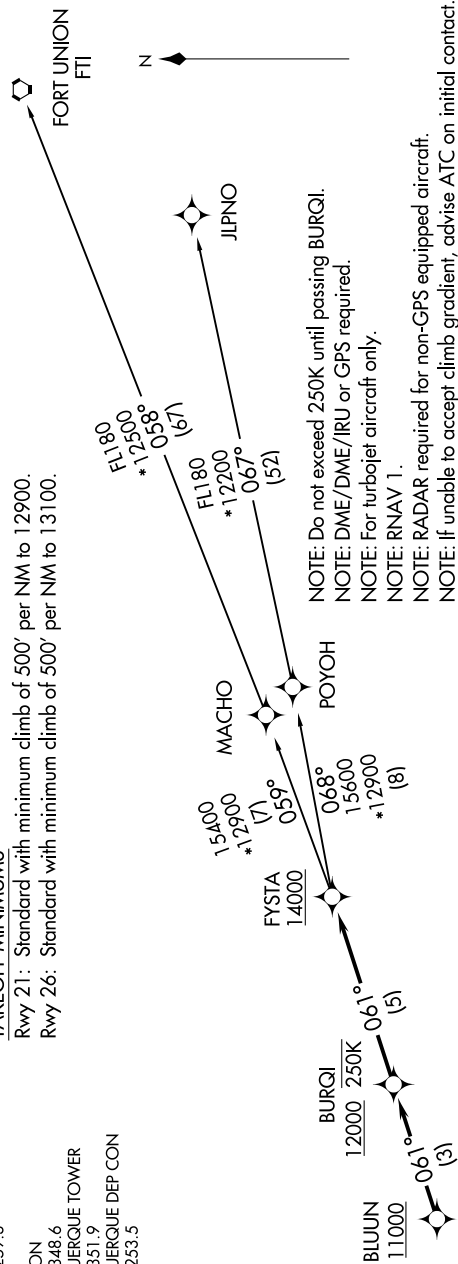
ALDO & C. S.p.A.
12033519170.3 331.7
ALBUQUERQUE DEP CONALBUQUERQUE
127 A 253 5

TOP ALTITUDE:
FL200

TAKEOFF MINIMUMS

Rwy 21: Standard with minimum climb of 500' per NM to 12900.

Rwy 26: Standard with minimum climb of 500' per NM to 13100.



NOTE: Do not exceed 250K until passing BURQL.

NOTE: DME/DME/IRU or GPS required.

NOTE: For turbojet aircraft only.

NOTE: RNAV 1.

NOTE: RADAR required for non-GPS equipped aircraft.

NOTE: If unable to accept climb gradient, advise ATC on initial contact.

DEPARTURE ROUTE DESCRIPTION

TAKEOFF RUNWAY 21: Climb heading 214° to 6200, then right turn direct BLUUN, cross BLUUN at or above 11000, then on track 061° to BURQI, cross BURQI at or above 12000, then on track 061° to FYSTA, cross FYSTA at or above 14000, thence. . .

TAKEOFF RUNWAY 26: Climb heading 259° to 7500, then right turn direct BLUUN, cross BLUUN at or above 11000, then on track 061° to BURQI, cross BURQI at or above 12000, then on track 061° to FYSTA, cross FYSTA at or above 14000, thence. . .

... (transition). Maintain FL200, expect filed altitude ten minutes after departure.

FORT UNION TRANSITION (FYSTA3.FTI)

JLPNO TRANSITION (FYSTA3.JLPNO)

NOTE: Chart not to scale.

FYSTA THREE DEPARTURE (RNAV)

(FYSTA3.FYSTA) 25JUN15

ALBUQUERQUE, NEW MEXICO

ALBUQUERQUE INTL SUNPORT (ABQ)