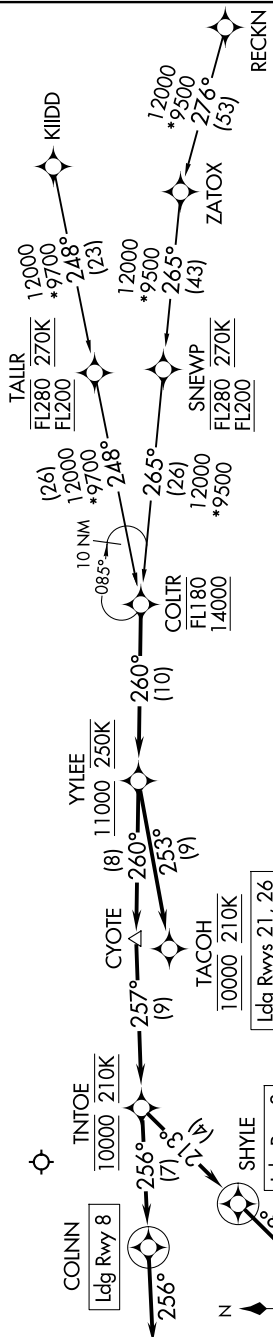


**CAUTION:** Glider activity sunrise to sunset; 30 to 50 miles east of KABQ; 17500 feet MSL and below.

ALBUQUERQUE APP CON  
123.9 354.1  
D-ATIS  
118.0 257.7

COLTR FOUR ARRIVAL (RNAV)  
(COLTR.COLTR4) 02DEC21



NOTE: Turbojet aircraft only.

NOTE: Landing Rwy 3, expect clearance prior to TNOE and RADAR vectors after SHYLE.

NOTE: Landing Rwy 8, expect clearance prior to TNOE and RADAR vectors after COLINN

NOTE: Landing Rwy 21, 26: RNP-AR aircraft expect RNAV (RNP) approach prior to YYLEE.

Non-RNP aircraft expect RADAR vectors to final approach course after TACOH.

NOTE: Chart not to scale.

## ARRIVAL ROUTE DESCRIPTION

KIIDD TRANSITION (KIIDD.COLTR4)

RECKN TRANSITION (RECKN.COLTR4)

From COLTR on track 260° to cross YLEE at or above 1 000 and at 250K.

LANDING RUNWAY 3: From YYLEE on track 260° to CYOTE, then on track 257° to cross TNOE at 10000 and at 210K, then on track 213° to SHYLE, then on track 213°. Expect RADAR vectors to final approach course for RNP. GPS, or ILS RWY 3 approach.

LANDING RUNWAY 8: From YILEE on track 260° to CYOTE, then on track 257° to cross TNOE at 10000 and at 210K, then on track 256° to COLNN, then on track 256°. Expect RADAR vectors to final approach course for RNP. GPS, or ILS RWY 8 approach.

LANDING RUNWAY 21: From YYLEE on track 253° to cross TACOH at 10000 and at 210K. Expect RNP Z RWY 21 approach or

RADAR vectors to final approach course.

LANDING RUNWAY 26: From YYLEE on track 253° to cross TACOH at 10000 and at 210K. Expect RNP Z RWY 26 approach or

---

RADAR vectors to final approach course.