

SW-1, 07 AUG 2025 to 04 SEP 2025

DEPARTURE ROUTE DESCRIPTION

TAKEOFF RUNWAY 21: Climb heading 214° to 5860, then direct ASTAH, cross ASTAH at or below 9000, then on depicted route to ADYOS. Thence. . . .

TAKEOFF RUNWAY 26: Climb heading 259° to 5860, then direct ABQ VORTAC, then on track 262° to ADYOS. Thence. . .

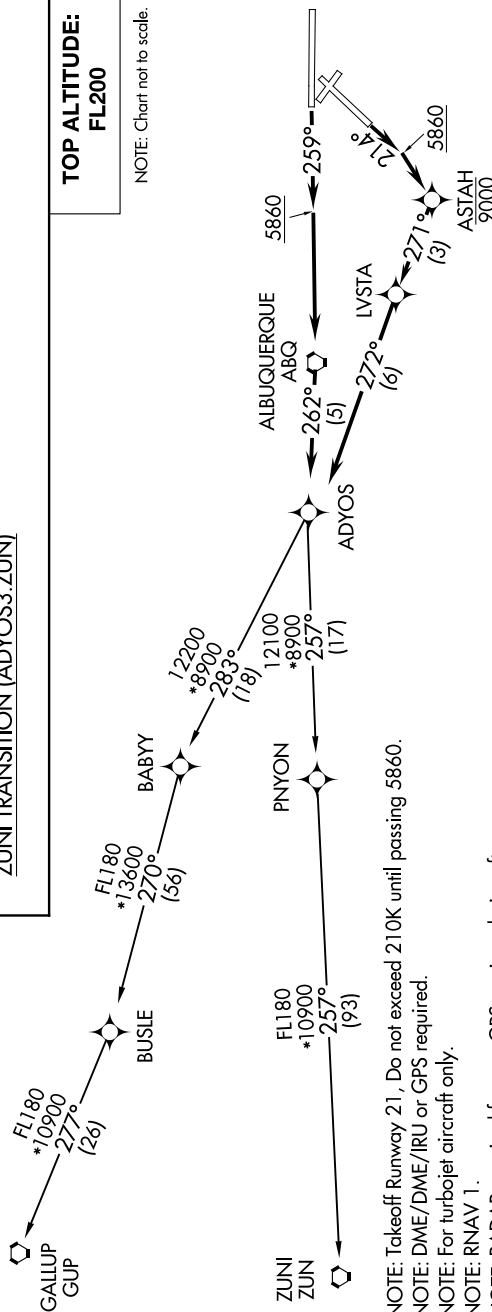
... (transition). Maintain FL200, expect filed altitude ten minutes after departure.

GALLUP TRANSITION (ADYOS3.GUP)

ZUNI TRANSITION (ADYOS3.ZUN)

TOP ALTITUDE:
FL200

NOTE: Chart not to scale.



NOTE: If unable to accept climb gradient, advise ATC on initial contact.

NOTE: For non-GPS equipped aircraft on: GLIP Transition: ABQ and ONM DME's must be operational

NOTE: For non GPS equipped aircraft on: COI Transition: ABC and ONM DME's must be operational.

NOTE: For non GPS equipped aircraft on: ZIN Transition: ABC and ONM DME's must be operational.

TAKEOFF MINIMUMS

Rwy 21/26: Standard with minimum climb of 500' per NM to 5860.

NOTE: Takeoff Runway 21, Do not exceed 210K until passing 5860.

NOTE: DME/DME/IRU or GPS required.

NOTE: For turbojet aircraft only.

NOTE: RNAV 1.

NOTE: RADAR required for non-GPS equipped aircraft.

NOTE: If unable to accept climb gradient, advise ATC on initial contact.

NOTE: For non-GPS equipped aircraft on: GLIP Transition: ABQ and ONM DME's must be operational

NOTE: For non GPS equipped aircraft on: COI Transition: ABC and ONM DME's must be operational.

NOTE: For non GPS equipped aircraft on: ZIN Transition: ABC and ONM DME's must be operational.

SW-1, 07 AUG 2025 to 04 SEP 2025

ADYOS THREE DEPARTURE (RNAV)

(ADYOS3.ADYOS) 25JUN15

ALBUQUERQUE, NEW MEXICO

ALBUQUERQUE INTL SUNPORT (ABQ)