

WAAS CH <b>78124</b> <b>W28A</b>	APP CRS <b>281°</b>	Rwy Ldg TDZE Apt Elev	<b>6007</b> <b>285</b> <b>285</b>
--	------------------------	-----------------------------	---

RNAV (GPS) RWY 28

ALBANY INTL (ALB)

RNP APCH - GPS.

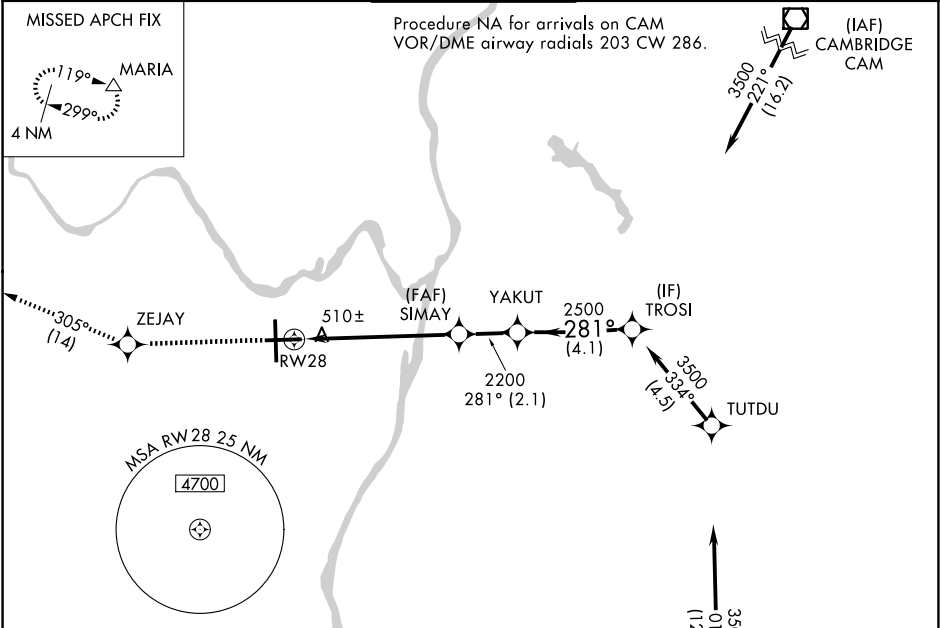
▼

▲

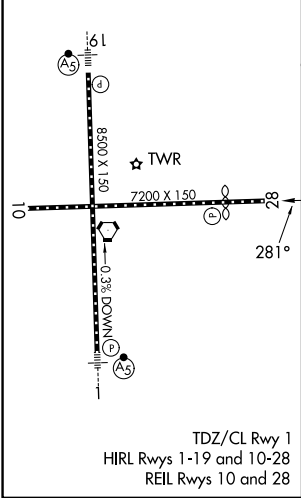
For uncompensated Baro-VNAV systems, LNAV/VNAV NA below -18°C or above 42°C. Circling NA west of Rwy 1-19. Circling Rwy 10 NA at night. When VGSI inop, procedure NA at night. Rwy 28 helicopter visibility reduction below 1 SM NA.

MISSED APPROACH: Climb to 3500 direct ZEJAY and on track 305° to MARIA and hold.

D-ATIS <b>120.45</b>	ALBANY APP CON <b>132.825 307.2</b>	ALBANY TOWER <b>119.5 257.8</b>	GND CON <b>121.7 348.6</b>	CLNC DEL <b>127.50</b>
-------------------------	--	------------------------------------	-------------------------------	---------------------------



ELEV 285	<b>D</b>	TDZE 285
----------	----------	----------



3500	ZEJAY	tr 305°	MARIA	VGSI and RNAV glidepath not coincident (VGSI Angle 3.22/TCH 53).	TROSI
		SIMAY	YAKUT		
		2200	2500		3500
			2200		
					GP 3.00° TCH 40
		5.9 NM	2.1 NM	4.1 NM	
CATEGORY	A	B	C	D	
LPV DA	783-1¾ 498 (500-1¾)				
LNAV/VNAV DA	825-1⅞ 540 (600-1⅞)				
LNAV MDA	780-1 495 (500-1)		780-1⅓ 495 (500-1⅓)		
CIRCLING	820-1 535 (600-1)		860-1½ 575 (600-½)		960-2¼ 675 (700-2¼)