

25219

RNAV (GPS) RWY 5

SOUTHWEST GEORGIA RGNL (ABY)

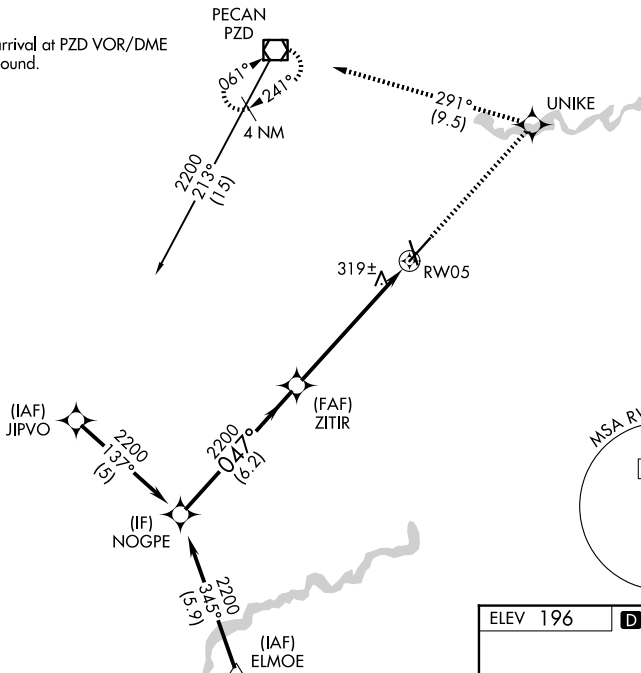
⚠ For uncompensated Baro-VNAV systems, LNAV/VNAV NA below -7°C or above 54°C. For inop ALS, increase LNAV Cat D visibility to RVR 6000.
⚠ ** RVR 1800 authorized with use of FD or AP or HUD to DA.



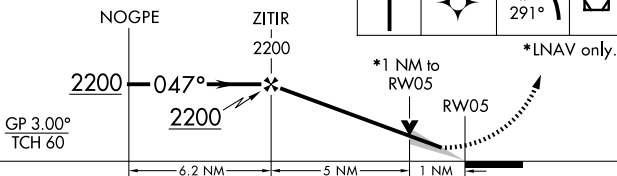
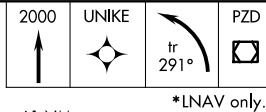
MISSED APPROACH: Climb to 2000
direct UNIKE and left turn on track
291° to PZD VOR/DME and hold.

| | | | | |
|----------------|---------------------------------------|--|------------------------|------------------|
| ATIS 133.05 | JACKSONVILLE CENTER 125.75 363.075 | ALBANY TOWER ★ 120.25 (CTAF) 0336.4 | GND CON 121.9 348.6 | UNICOM 122.95 |
|----------------|---------------------------------------|--|------------------------|------------------|

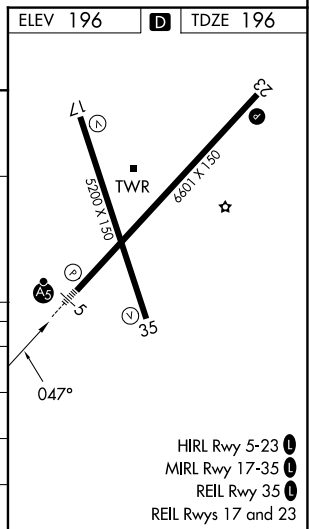
Procedure NA for arrival at PZD VOR/DME on V35-159 northbound.



VGSI and RNAV glidepath not coincident
(VGSI Angle 3.00/TCH 55).



| CATEGORY | A | B | C | D |
|------------------|----------------------|----------------------|------------------------|------------------------|
| LPV DA** | 396/24 200 (200-½) | | | |
| LNAV/ VNAV DA | 635/50 439 (500-1) | | | |
| LNAV MDA | 580/24 384 (400-½) | | | 580/50 384 (400-1) |
| CIRCLING | 640-1 444 (500-1) | 660-1 464 (500-1) | 940-2¼ 744 (800-2¼) | 940-2½ 744 (800-2½) |



ALBANY, GEORGIA
Amdt 1D 26MAR20

SOUTHWEST GEORGIA RGNL (ABY)
RNAV (GPS) RWY 5

31°32'N-84°12'W

SE-4, 07 AUG 2025 to 04 SEP 2025