

WAAS CH 48815 W17A	APP CRS 167°	Rwy Ldg TDZE 196 Apt Elev 196
--	------------------------	---

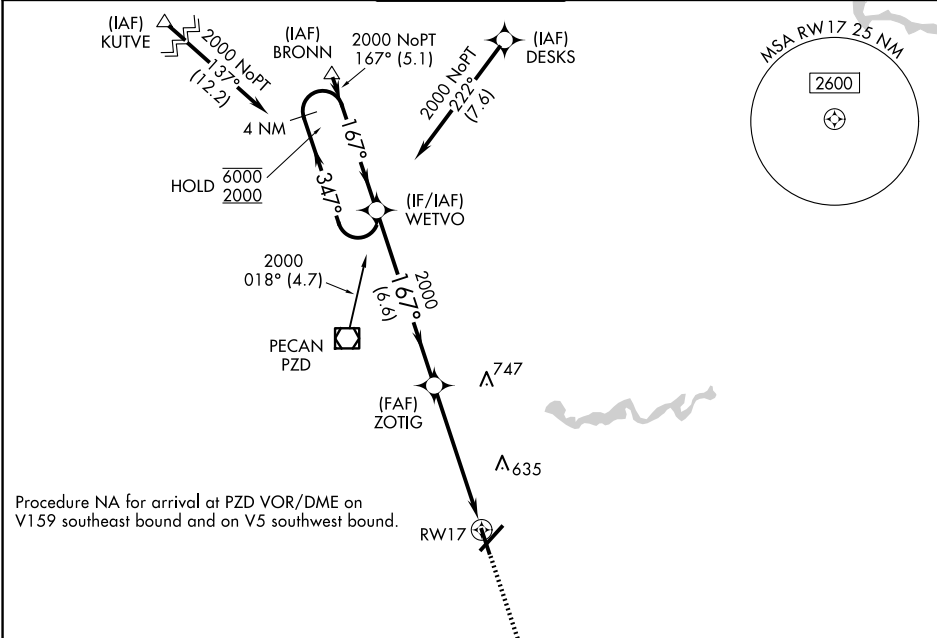
RNAV (GPS) RWY 17
SOUTHWEST GEORGIA RGNL (ABY)

RNP APCH.

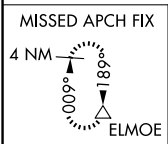
▼ Rwy 17 helicopter visibility reduction below ¾ SM NA. For uncompensated
▲ Baro-VNAV systems, LNAV/VNAV NA below -7°C or above 54°C.

MISSED APPROACH: Climb to 3000 direct TUPGE
and on track 226° to ELMOE and hold.

ATIS 133.05	JACKSONVILLE CENTER 125.75 363.075	ALBANY TOWER ★ 120.25 (CTAF) 0336.4	GND CON 121.9 348.6	UNICOM 122.95
-----------------------	--	---	-------------------------------	-------------------------



Procedure NA for arrival at PZD VOR/DME on
V159 southeast bound and on V5 southwest bound.



4 NM Holding Pattern	WETVO	ZOTIG	TUPGE	ELMOE
6000 2000 GP 3.00° TCH 52	167°	2000	3000	tr 226°
6.6 NM	4.2 NM	1.2 NM		
CATEGORY	A	B	C	D
LPV DA	534-1¼	338 (400-1¼)		
LNAV/VNAV DA	603-1½	407 (500-1½)		
LNAV MDA	640-1 444 (500-1)	640-1¼ 444 (500-1¼)	640-1½ 444 (500-1½)	
CIRCLING	640-1 444 (500-1)	660-1 464 (500-1)	940-2¼ 744 (800-2¼)	940-2½ 744 (800-2½)

