

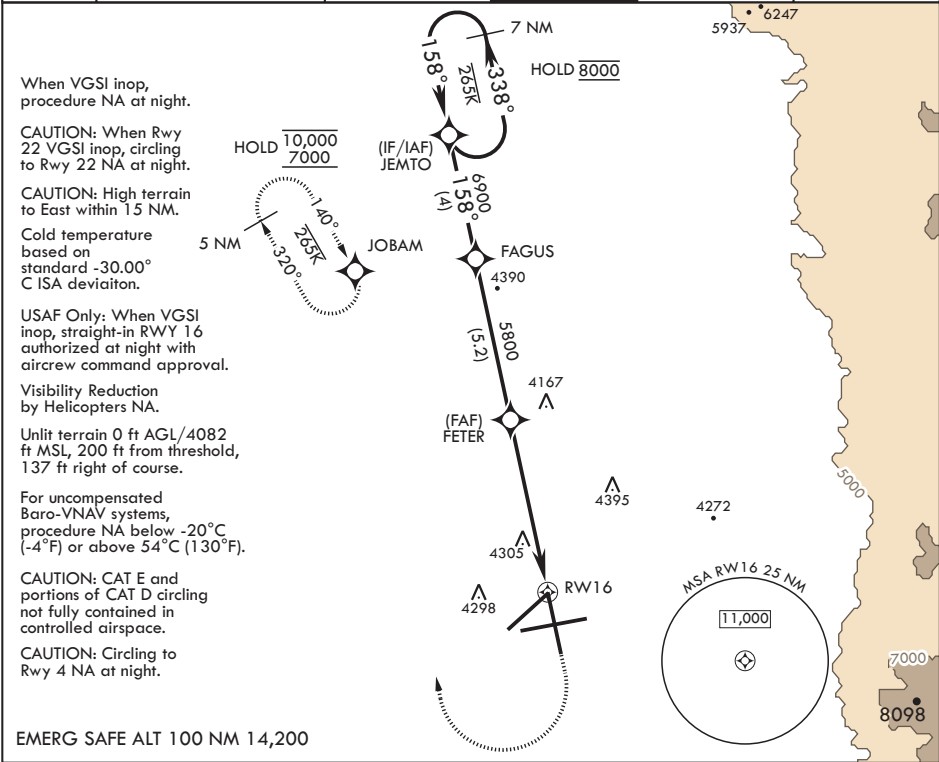
APCH CRS	Rwy Idg	12,134
158°	TDZE	4083
	Arpt Elev	4093

AL-7 (USAF)

HOLLOMAN AFB (KHMN)

RNP APCH-GPS	ALSF-1	MISSED APPROACH: Climb straight ahead to 7000, passing 5000 turn direct JOBAM, do not exceed 265 KIAS until turn completion and hold.
* When ALS inop, increase vis to 1 3/8 miles. ** When ALS inop, increase CAT A/B vis to 1 mile; CAT C/D vis to 1 3/8 miles.		

ATIS★	ALBUQUERQUE CENTER	APP CON	TOWER★	GND CON	CLNC DEL
273.5	132.65 257.6	120.6 269.225	119.3 254.4	127.05 275.8	126.7 289.4



7 NM Holding Pattern JEMTO		5000	7000	JOBAM	ELEV 4093	TDZE 4083
GP 2.88° TCH 51						
CATEGORY	A	B	C	D	E	
LNAV/VNAV DA*	4569-1		486	(500-1)		
LNAV MDA**	4600-¾ 517 (600-¾)		4600-1	517	(600-1)	
CIRCLING	4640-1 547 (600-1)		4680-1½ 587 (600-1½)	4740-2 647 (700-2)	4780-2½ 687 (700-2½)	HIRL all Rwy REIL Rwy 22

SW-1, 07 AUG 2025 to 04 SEP 2025

SW-1, 07 AUG 2025 to 04 SEP 2025