

ATIS ★ 273.5		RADAR required	Rwy	Knots	60	120	180	240	300	360
CLNC DEL			04 ⓐ	V/V(fpm)	477	954	1431	1908	2385	2862
126.7 289.4			16 ⓑ	V/V(fpm)	501	1002	1503	2004	2505	3006
GND CON			34 ⓐ	V/V(fpm)	458	916	1374	1832	2290	2748
127.05 275.8										
TOWER ★										
119.3 254.4										
DEP CON										
128.1 284.0										
ALBUQUERQUE CENTER										
132.65 257.6										

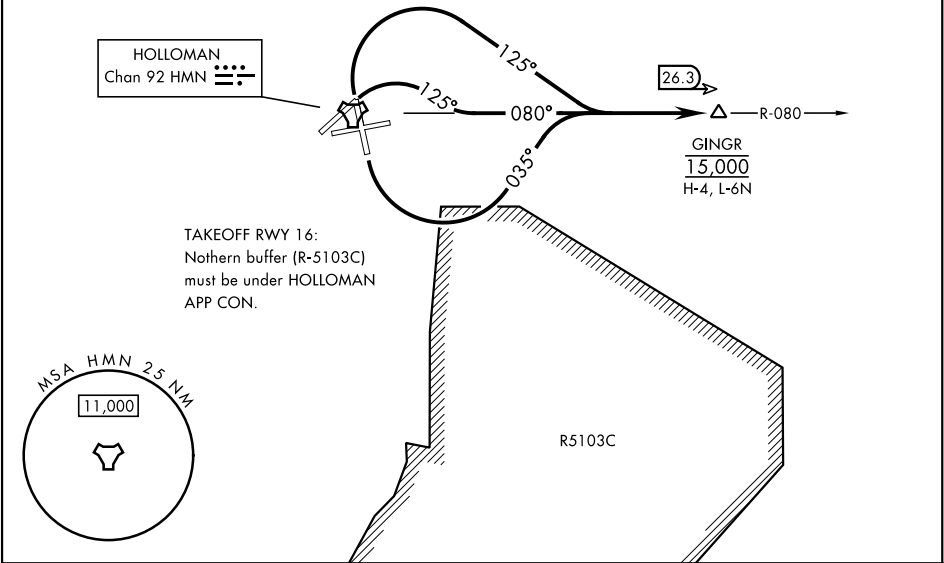
Minimum Climb Rate

ⓐ to 11,500

ⓑ to 12,000

11,929

MILITARY USE ONLY



DEPARTURE ROUTE DESCRIPTION	
<u>TAKEOFF RWY 4:</u>	Climbing right turn to track 125°, intercept HMN R-080 to GINGR. Cross GINGR at 15,000.
<u>TAKEOFF RWY 16:</u>	Climbing left turn to track 035°, intercept HMN R-080 to GINGR. Cross GINGR at 15,000.
<u>TAKEOFF RWY 34:</u>	Climbing right turn to track 125°, intercept HMN R-080 to GINGR. Cross GINGR at 15,000.

SW-1, 07 AUG 2025 to 04 SEP 2025

SW-1, 07 AUG 2025 to 04 SEP 2025