

ALAMOGORDO, NEW MEXICO

# HI-RNAV (GPS) RWY 22

APCH CRS	Rwy Idg	10,578
218°	TDZE	4083
	Arpt Elev	4093

- (USAF)

HOLLOMAN AFB (KHMN)

RNP APCH-GPS

ALSF-1

**MISSED APPROACH:** Climb to 5000 then climbing right turn to 7000 direct JOBAM and hold.

**T** \* When ALS inop, increase vis to 1 ¼ miles.

\*\* When ALS inop, increase CAT AB vis to 1 mile; CAT CDE vis to 1 3/8 miles.

ATIS★  
273.5

ALBUQUERQUE CENTER  
132.65 257.6

APP CON  
20.6 269.225

TOWER★  
19.3 254.4

GND CON  
127.05 275.8

CLNC DEL  
126.7 289.4

\*\*\* When Circling to Rwy 25 at Night, operational VGSI required, remain on or above VGSI glidepath until threshold. Circling Visibility Reduction by Helicopters NA.

### Visibility reduction by helicopters NA.

INBOUND WEST: Airspace West Restricted. Expect routing via CORONA.

Unlit terrain 4083' MSL  
200' from threshold,  
400' right of course.

Unlit terrain 4083' MSL  
200' from threshold,  
72' right of course.

For uncompensated  
Baro-VNAV systems,  
procedure NA below -23°C  
(-9°F) or above 54°C (129°F).  
Average Cold Temperature  
based on standard  
-30.00°C ISA deviation.

(IAF)  
KASTL  
11,000

CAUTION: High terrain to the East within 15 NM.

CAUTION: Circling to Rwy 4 NA at night.

**CAUTION:** When Rwy 16 VGSI inop, circling to Rwy 16 NA at night.

When VGSI inop,  
procedure NA at night.

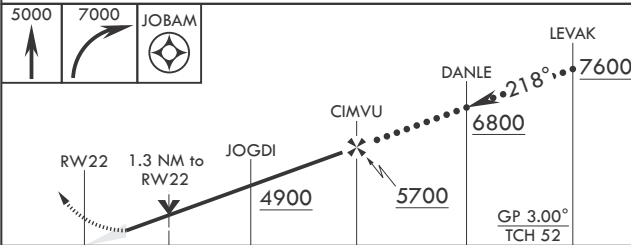
USAF Only: When VGSi inop, straight-in Rwy 22 authorized at night with aircrew command approval.

**CAUTION: CAT E and portions of CAT D circling not fully contained in controlled airspace.**

NOT FOR CIVIL USE

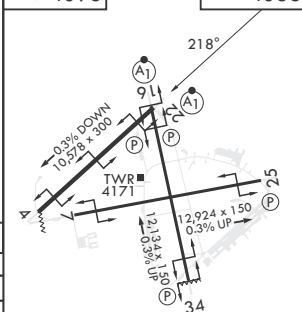
EMERG SAFE ALT 100 NM 14,200

5000	7000	JOBAM
		



ELEV 4093

TDZE 4083



HIRL all Rwys  
REIL Rwy 22

ALAMOGORDO, NEW MEXICO

32°52'N - 106°06'W

HOLLOMAN AFB (KHMN)

Amdt 5 26DEC24

# HI-RNAV (GPS) RWY 22