

AKRON, OHIO

AL-6 (FAA)

25219

WAAS CH 99735 W25A	APP CRS 249°	Rwy Ldg 6074 TDZE 1059 Apt Elev 1068
--	------------------------	---

RNAV (GPS) RWY 25
AKRON FULTON INTL (AKR)

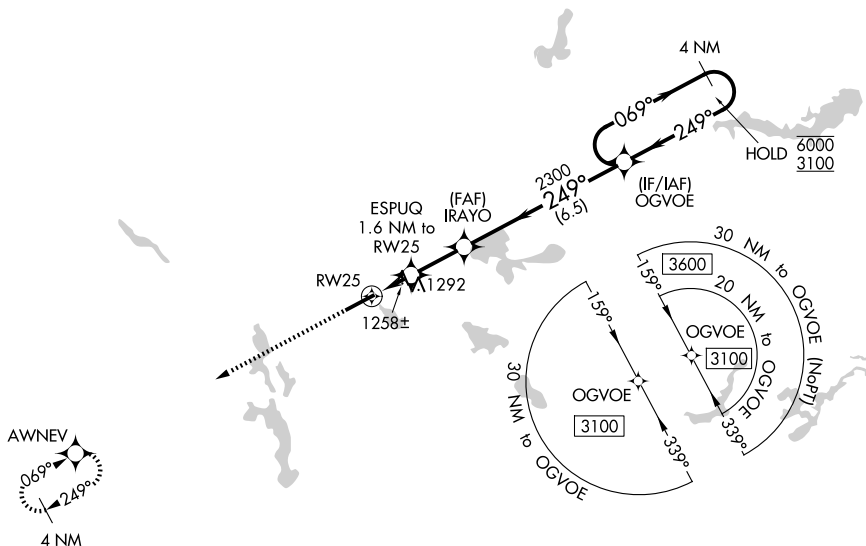
RNP APCH.



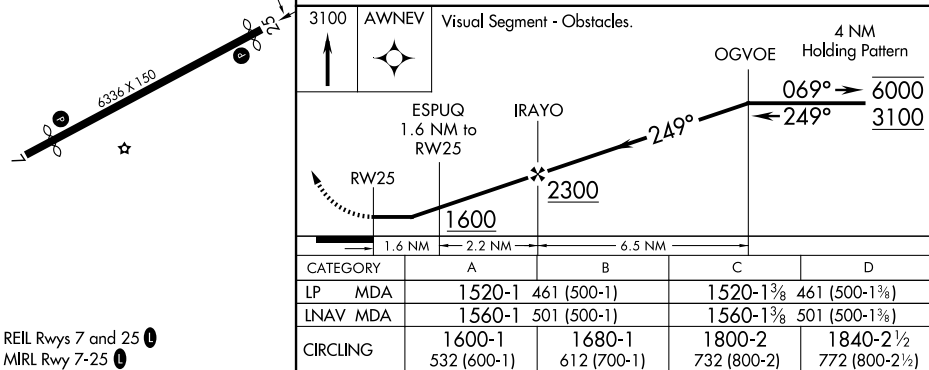
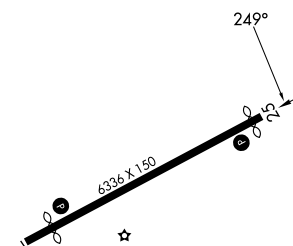
Rwy 25 helicopter visibility reduction below 1 SM NA.
Circling Rwy 7 NA at night.

MISSED APPROACH: Climb to 3100 direct AWNEV and hold.

ASOS 126.825	CLEVELAND APP CON ★ 125.5 371.875	CLNC DEL 121.6	UNICOM 123.075 (CTAF) ①
------------------------	---	--------------------------	-----------------------------------



ELEV 1068		TDZE 1059
-----------	--	-----------



AKRON, OHIO

Orig-D 08SEP22

AKRON FULTON INTL (AKR)

41°02'N-81°28'W

RNAV (GPS) RWY 25

EC-2, 07 AUG 2025 to 04 SEP 2025