

LOC/DME I-AKR

**110.9**

Chan **46**

APP CRS

**249°**

Rwy Ldg TDZE Apt Elev

**6074**  
**1059**  
**1068**

LOC RWY 25

AKRON FULTON INTL (AKR)

ADF or DME or RADAR required for procedure entry.

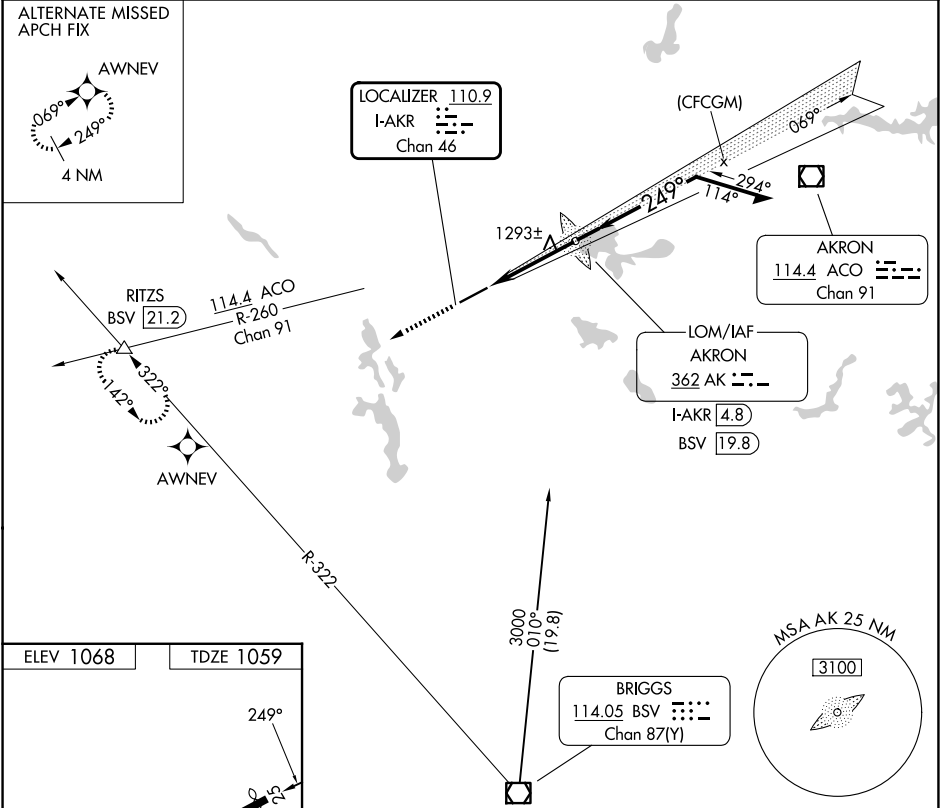
▼

▲

Rwy 25 helicopter visibility reduction below 1 SM NA.  
Circling Rwy 7 NA at night.

MISSED APPROACH: Climb to 3100 on heading 249° and BSV VOR/DME R-322 to RITZS INT/BSV 21.2 DME and hold.

ASOS <b>126.825</b>	CLEVELAND APP CON ★ <b>125.5 371.875</b>	CLNC DEL <b>121.6</b>	UNICOM <b>123.075 (CTAF) 0</b>
------------------------	---	--------------------------	-----------------------------------



Obstacle Chart Data:

Obstacle	Altitude (ft)	Distance (NM)	Category
BSV R-322	3100	3.7	A
I-AKR	2300	1.2	B

Visual Segment - Obstacles: 3.7 NM

Climb Profile: 2300 → 249° → 069° → 3000

Chart Title: REIL Rws 7 and 25, MIRL Rwy 7-25

<div> <div> <div>3100</div> <div>BSV R-322</div> <div>RITZS △</div> </div> <div> <div>hdg 249°</div> <div>Visual Segment - Obstacles.</div> <div>I-AKR 1.2</div> </div> </div> <div> <div>AK LOM I-AKR 4.8</div> <div>069°</div> <div>249°</div> <div>2300</div> <div>3000</div> <div>Remain within 10 NM</div> </div>						
<div> <div>3.7 NM</div> <div>REIL Rws 7 and 25</div> <div>MIRL Rwy 7-25</div> </div>						
CATEGORY	A		B		C	D
S-LOC 25	1560-1		501 (500-1)		1560-1 <sup>3</sup> / <sub>8</sub>	501 (500-1 <sup>3</sup> / <sub>8</sub> )
CIRCLING	1600-1 532 (600-1)		1680-1 612 (700-1)		1800-2 732 (800-2)	1840-2 <sup>1</sup> / <sub>2</sub> 772 (800-2 <sup>1</sup> / <sub>2</sub> )
FAF to MAP 3.7 NM						
Knots	60	90	120	150	180	
Min:Sec	3:42	2:28	1:51	1:29	1:14	

EC-2, 07 AUG 2025 to 04 SEP 2025

EC-2, 07 AUG 2025 to 04 SEP 2025