

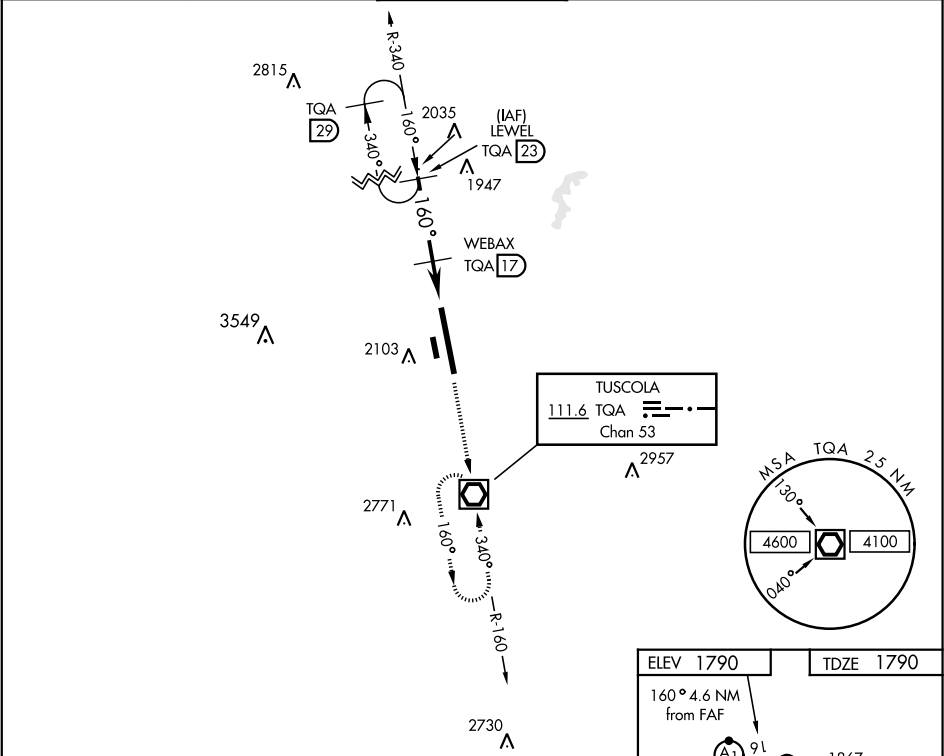
VOR/DME RWY 16

VOR/DME TQA	APCH CRS	Rwy ldg
111.6	160°	13,500
Chan 53		TDZE 1790
		Arprt Elev 1790

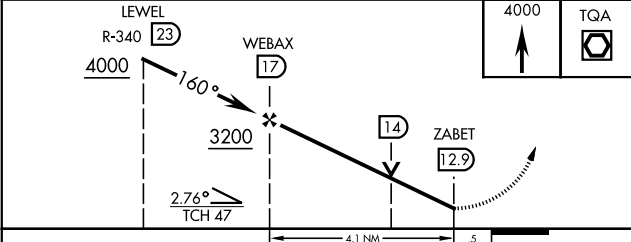
AL-2 [USAF]

DYESS AFB (KDYS)

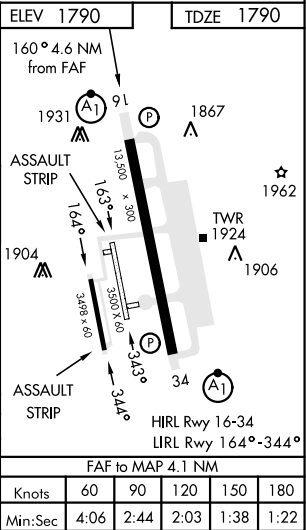
* When ALS inop, increase CAT AB RVR to 55 and vis to 1 mile, CAT CDE vis to 1 3/8 miles. ** Circling to other than Rwy 34 NA.		ALSF-1 (A1)	MISSED APPROACH: Climb and maintain 4000 proceed direct TQA and hold.	
ATIS ★ 269.175	ABILENE APP CON 125.0 338.3 EAST 127.2 282.3 WEST	DYESS TOWER 133.0 257.675	GND CON 118.35 275.8	ASR



EMERG SAFE ALT 100 NM 4600



CATEGORY	A	B	C	D	E
S-16*	2300/24	510 (600-1/2)	2300/55	510 (600-1)	
CIRCLING**	2300-1 510 (600-1)	2320-1 530 (600-1)	2460-1 3/4 670 (700-1 3/4)	2460-2 670 (700-2)	2460-2 1/4 670 (700-2 1/4)



VOR/DME RWY 16

SC-2, 07 AUG 2025 to 04 SEP 2025

SC-2, 07 AUG 2025 to 04 SEP 2025