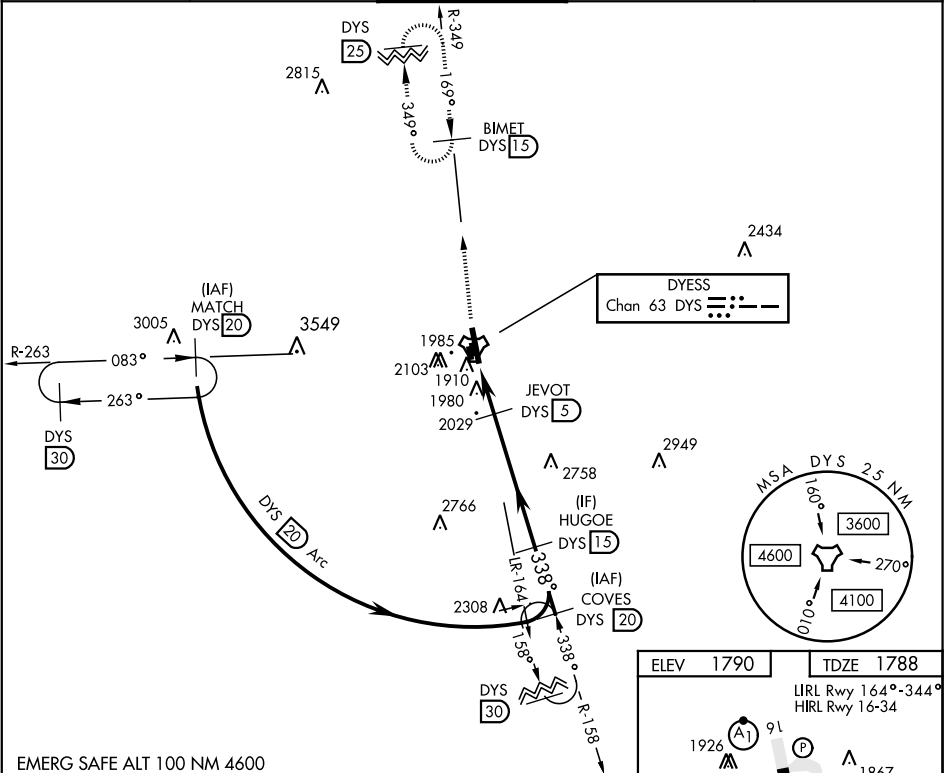


TACAN W RWY 34

TACAN Chan 63	DYS 338°	APCH CRS 338°	Rwy Idg 13,500 TDZE 1788 Arpt Elev 1790	AL-2 [USAF]	DYESS AFB (KDYS)
* When ALS inop, increase CAT AB RVR to 55 and vis to 1 mile, CAT CDE vis to 1½ miles. ** Circling to other than RWY 16 NA				ALSF-1 	MISSED APPROACH: Climb to 4000 via DYS TACAN R-349 to BIMET and hold.
ATIS ★ 269.175	ABILENE APP CON 125.0 338.3 EAST 127.2 282.3 WEST	DYESS TOWER 133.0 257.675	GND CON 118.35 275.8	ASR	



EMERG SAFE ALT 100 NM 4600

