
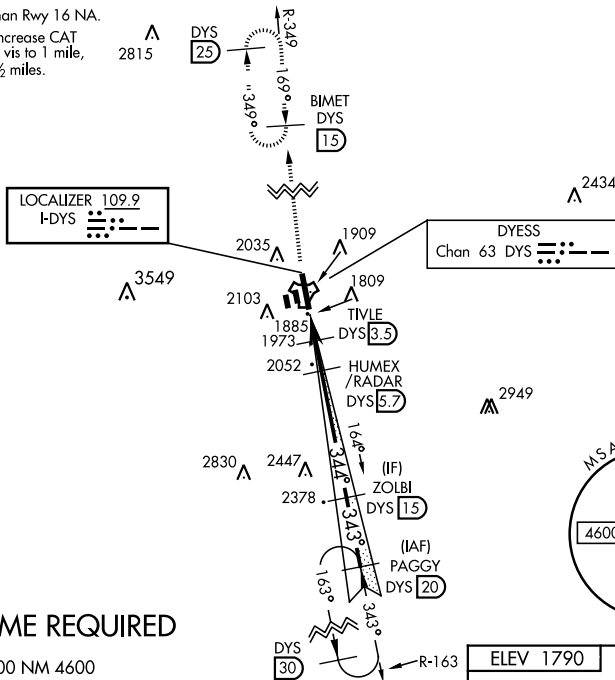


ILS or LOC W RWY 34

LOC I-DYS 109.9	APCH CRS 344°	Rwy Idg 13,500 TDZE 1788 Arpt Elev 1790	AL-2 [USAF]	DYESS AFB (KDYS)
<p>* When ALS inop, increase all CAT RVR to 40 and vis to $\frac{3}{4}$ mile.</p> <p>** When ALS inop, increase CAT AB RVR to 55 and vis to 1 mile, CAT CDE vis to 1 $\frac{1}{2}$ miles.</p>				<p>MISSED APPROACH: Climb to 4000 via DYS TACAN R-349 to BIMET and hold.</p>
<p>ATIS ★ 269.175</p>	<p>ABILENE APP CON 125.0 338.3 EAST 127.2 282.3 WEST</p>	<p>DYESS TOWER 133.0 257.675</p>	<p>GND CON 118.35 275.8</p>	<p>ASR</p>

*** Circling to other than Rwy 16 NA.

**** When ALS inop, increase CAT
AB RVR to 55 and vis to 1 mile,
CAT CDE vis to 1 1/2 miles.



RADAR or DME REQUIRED

FMERG SAFE ALT 100 NM 4600

