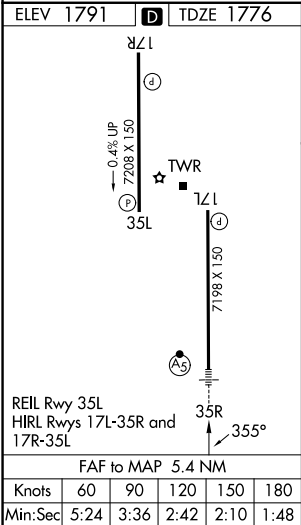
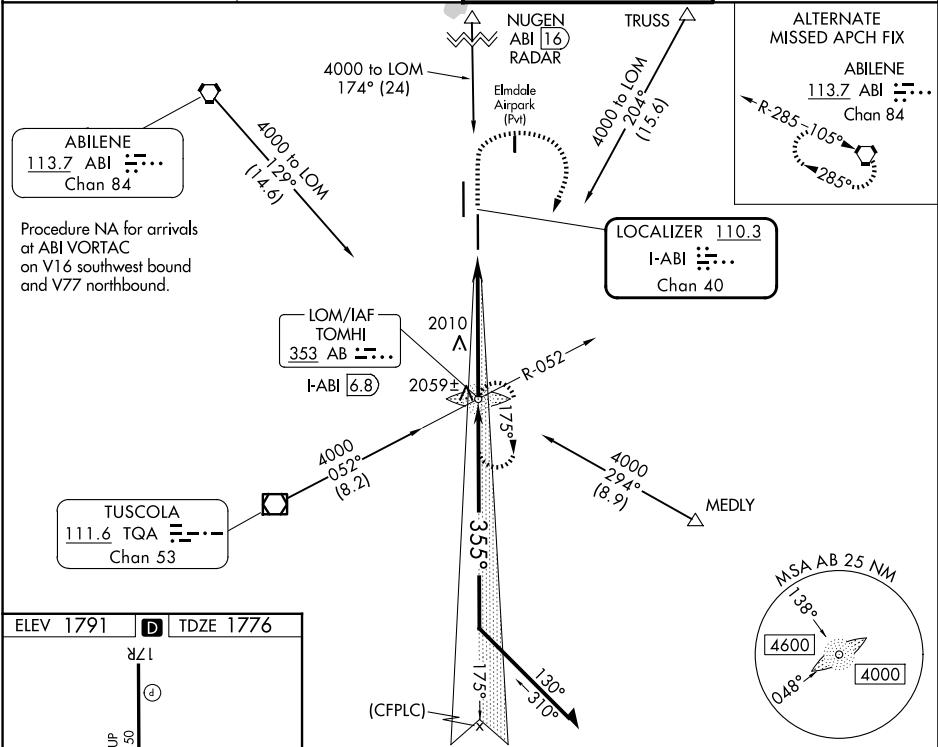






LOC/DME I-ABI <b>110.3</b> Chan <b>40</b>	APP CRS <b>355°</b>	Rwy Ldg TDZE <b>1798</b> Apt Elev <b>1791</b>
---	------------------------	---

ILS or LOC RWY 35R  
ABILENE RGNL (ABI)

ADF required. RADAR required for procedure entry at NUGEN.		MALSR 	MISSED APPROACH: Climb to 3300 then climbing right turn to 4000 direct TOMHI LOM/INT/I-ABI 6.8 DME and hold.
 For inop ALS, increase S-ILS 35R Cat E visibility to RVR 4000, and S-LOC 35R Cat C/D/E visibility to 1 3/4 SM. ** RVR 1800 authorized with use of FD or AP or HUD to DA.			

ATIS <b>118.25</b>	ABILENE APP CON <b>125.0 338.3</b> (EAST) <b>127.2 282.3</b> (WEST)	ABILENE TOWER <b>120.1 257.8</b>	GND CON <b>121.7 348.6</b>
-----------------------	---	-------------------------------------	-------------------------------



3300		4000		TOMHI		TOMHI LOM/INT		I-ABI 6.8		Remain within 15 NM			
								3573		355°		4000	
*LOC only.		I-ABI 1.4		*I-ABI 2.7						GS 3.00° TCH 58			
1.3		4.1 NM											
CATEGORY	A		B		C		D		E				
S-ILS 35R**	1976/24 200 (200-½)												
S-LOC 35R	2260/24		484 (500-½)		2260/50		484 (500-1)						
CIRCLING	2300-1 509 (600-1)		2320-1 529 (600-1)		2420-1¾ 629 (700-1¾)		2460-2 669 (700-2)		2620-3 829 (900-3)				