

LONG PRAIRIE, MINNESOTA

AL-10350 (FAA)

24137

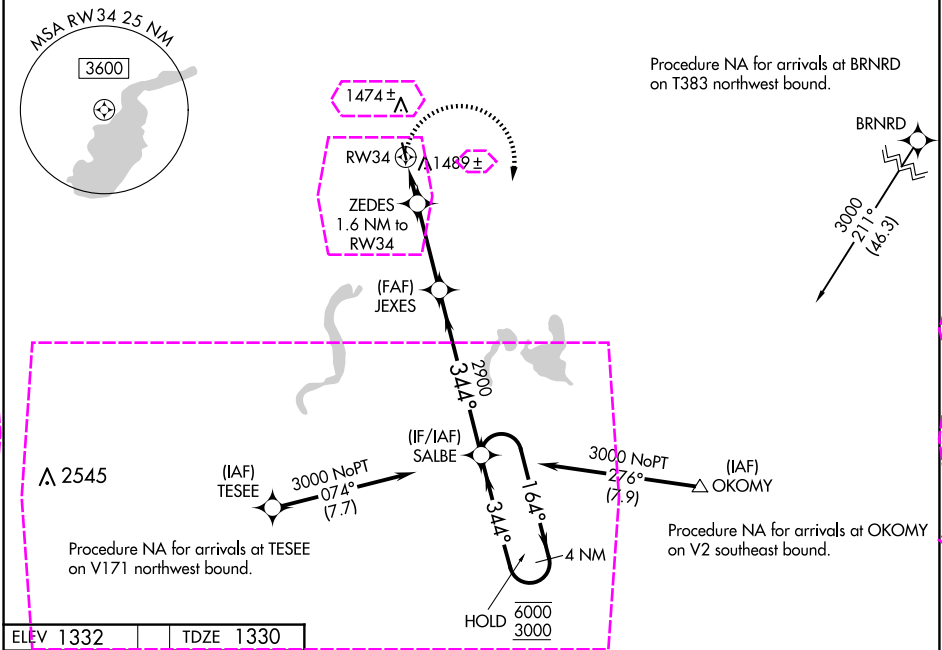
APP CRS	Rwy Idg	3501
344°	TDZE	1330
	Apt Elev	1332

RNAV (GPS) RWY 34

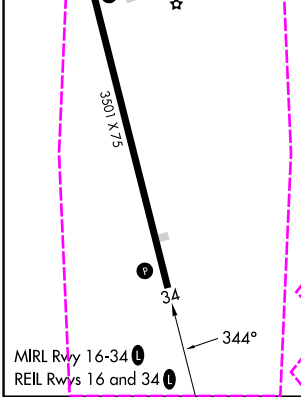
TODD FLD (14Y)



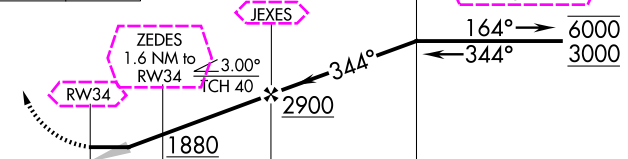
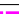
RNP APCH.	MISSED APPROACH: Climbing right turn to 3000 direct SALBE and hold.
-----------	---

AWOS-3 118.65	MINNEAPOLIS CENTER 126.1 269.2	CTAF 122.9 0
------------------	-----------------------------------	-----------------



ELEV 1332	TDZE 1330
-----------	-----------



3000	SALBE	VGSI and descent angles not coincident (VGSI Angle 3.00/TCH 22).			
					
CATEGORY	A	B	C	D	
LNAV MDA	1740-1 410 (500-1)		1740-1 $\frac{1}{8}$ 410 (500-1 $\frac{1}{8}$)	NA	
 CIRCLING	1840-1 508 (600-1)		1880-1 $\frac{1}{2}$ 548 (600-1 $\frac{1}{2}$)	NA	

LONG PRAIRIE, MINNESOTA

Amf 3 21MAY20

45°54'N-94°52'W

RNAV (GPS) RWY 34

NC-1, 12 JUN 2025 to 10 JUL 2025

NC-1, 12 JUN 2025 to 10 JUL 2025

LONG PRAIRIE, MINNESOTA

AL-10350 (FAA)

25191

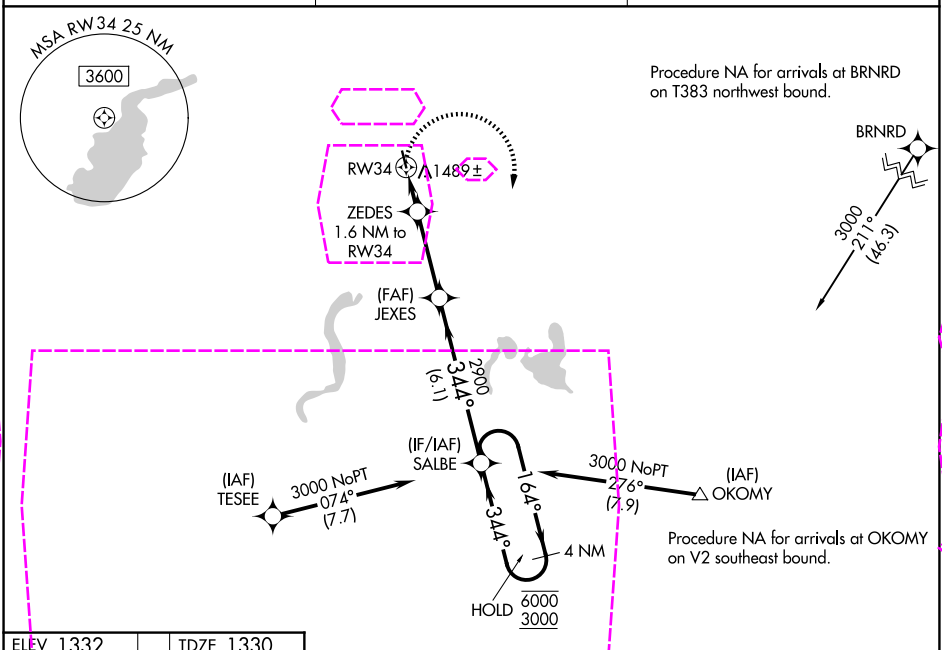
APP CRS	Rwy Ldg	3501
344°	TDZE	1330
	Apt Elev	1332

RNAV (GPS) RWY 34

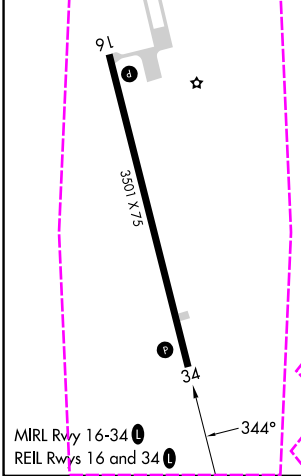
TODD FLD (14Y)



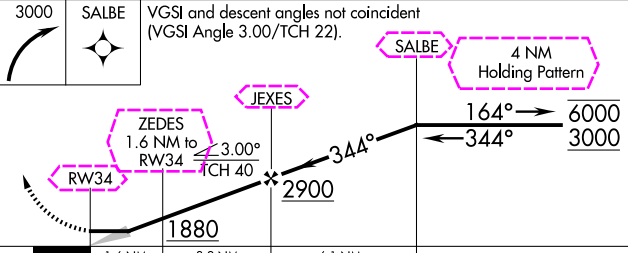
RNP APCH - GPS	MISSED APPROACH: Climbing right turn to 3000 direct SALBE and hold.
----------------	---

AWOS-3 118.65	MINNEAPOLIS CENTER 126.1 269.2	CTAF 122.9 0
------------------	-----------------------------------	-----------------



ELEV 1332	TDZE 1330
-----------	-----------



3000	SALBE	VGSI and descent angles not coincident (VGSI Angle 3.00/TCH 22).			
					
CATEGORY		A	B	C	D
LNAV MDA	1740-1 410 (500-1)			1740-1 $\frac{1}{8}$ 410 (500-1 $\frac{1}{8}$)	NA
CIRCLING	1840-1 508 (600-1)			1960-1 $\frac{3}{4}$ 628 (700-1 $\frac{3}{4}$)	NA

LONG PRAIRIE, MINNESOTA

Amdt 3A 10JUL25

45°54'N-94°52'W

TODD FLD (14Y)

RNAV (GPS) RWY 34