

PERHAM, MINNESOTA

AL-9270 (FAA)

20254

WAAS CH 78133 W31A	APP CRS 308°	Rwy Idg TDZE 1374 Apt Elev 1376	4102
--	------------------------	---	-------------

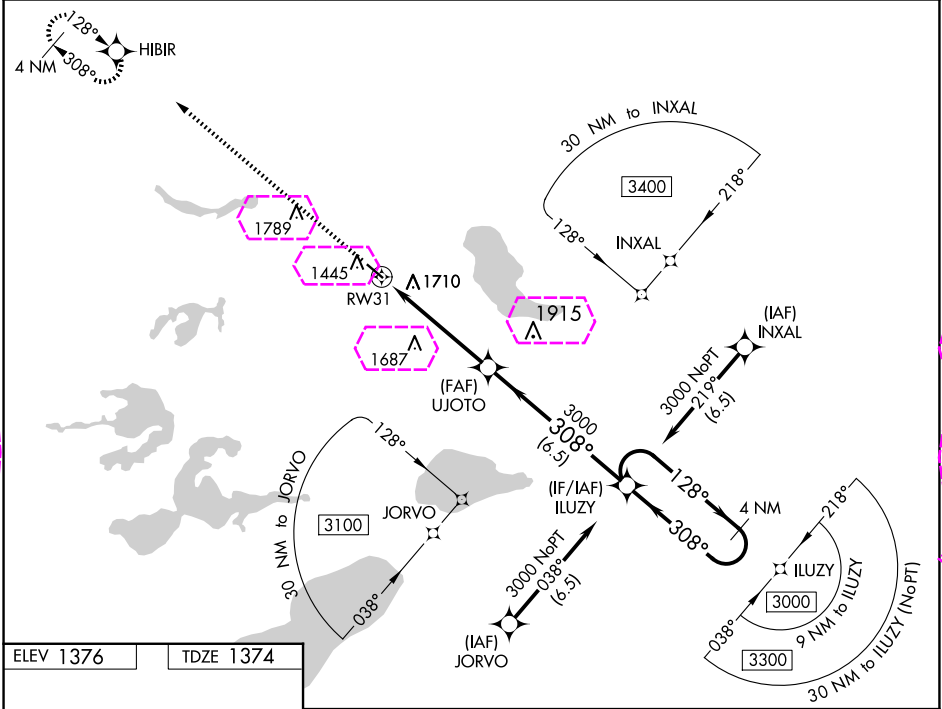
RNAV (GPS) RWY 31

PERHAM MUNI (16D)

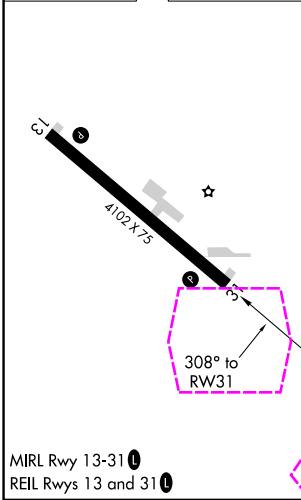
Baro-VNAV NA. DME/DME RNP-0.3 NA. Helicopter visibility reduction below ¾ SM NA. Use Detroit Lakes altimeter setting; when not received, use Wadena altimeter setting.

MISSED APPROACH: Climb to 3200 direct HIBIR and hold.

MINNEAPOLIS CENTER 126.1 269.2	GCO 121.725	CTAF 122.9
--	-----------------------	----------------------



ELEV 1376 TDZE 1374



3200	HIBIR	UJOTO	ILUZY	4 NM Holding Pattern
3000		3000	3000	
RW31		3000	3000	
5 NM		6.5 NM		
CATEGORY	A	B	C	D
LPV DA	1669-1	295 (300-1)	NA	NA
LNAV/VNAV DA	2158-2½	784 (800-2½)	NA	NA
LNAV MDA	2080-1	706 (800-1)	NA	NA
CIRCLING	2120-1	744 (800-1)	NA	NA

PERHAM, MINNESOTA
Amdt 1A 05FEB15

46°37'N-95°36'W

RNAV (GPS) RWY 31

PERHAM MUNI (16D)

WAAS CH 78133 W31A	APP CRS 308°	Rwy Ldg TDZE Apt Elev	4102 1374 1376
--	------------------------	-----------------------------	---

RNAV (GPS) RWY 31

PERHAM MUNI (16D)

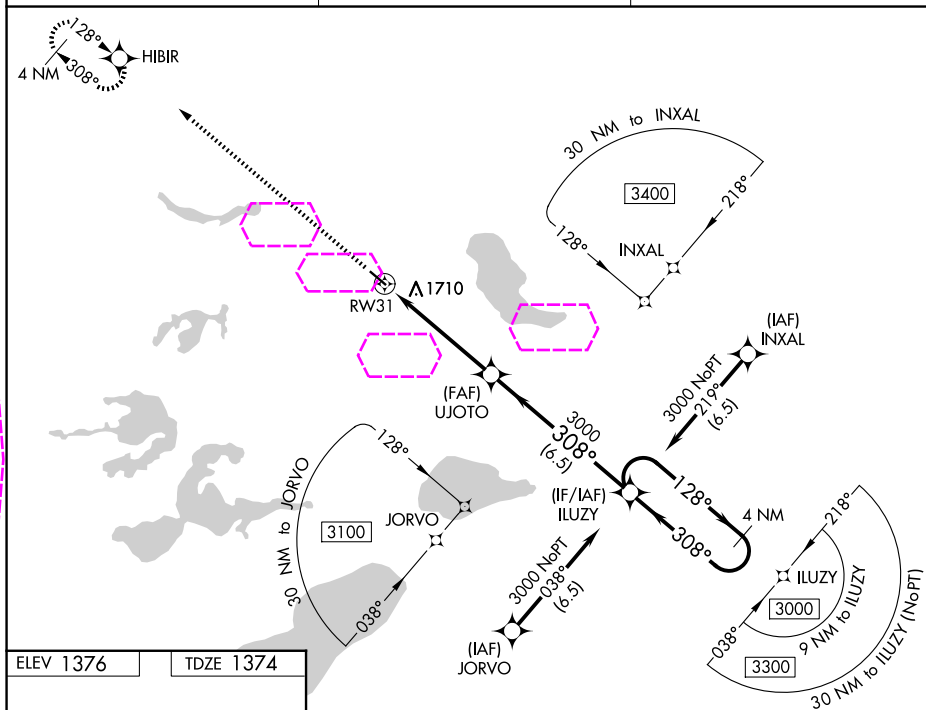
V Baro-VNAV NA. DME/DME RNP-0.3 NA. Helicopter visibility
A NA reduction below $\frac{3}{4}$ SM NA. Use Detroit Lakes altimeter setting;
when not received, use Wadena altimeter setting.

MISSED APPROACH: Climb to 3200 direct HIBIR and hold.

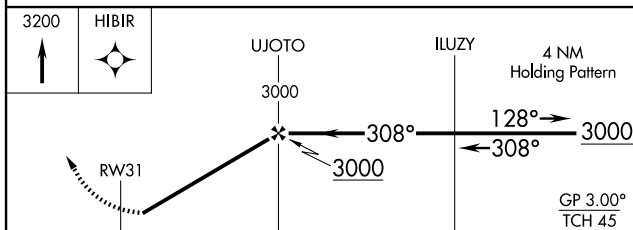
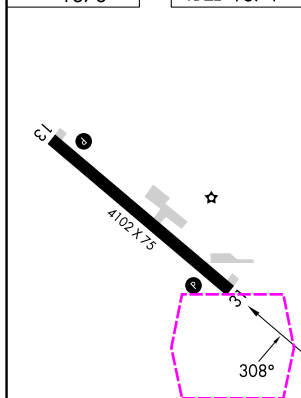
MINNEAPOLIS CENTER
126.1 269.2

GCO
121.725

CTAF
122.9



ELEV 1376		TDZE 1374
-----------	--	-----------



CATEGORY		A	B	C	D
LPV	DA	1669-1	295 (300-1)		NA
RNAV/ VNAV	DA	2158-2½	784 (800-2½)		NA
RNAV	MDA	2080-1	706 (800-1)		NA
	CIRCLING	2120-1	744 (800-1)		NA

PERHAM, MINNESOTA
Amdt 1A 05FEB15

46°37'N-95°36'W

PERHAM MUNI (16D)

RNAV (GPS) RWY 31

NC-1, 10 JUL 2025 to 07 AUG 2025

NC-1, 10 JUL 2025 to 07 AUG 2025