

WAAS CH 62933 W13A	APP CRS 128°	Rwy Idg 4102 TDZE 1376 Apt Elev 1376
--	------------------------	---

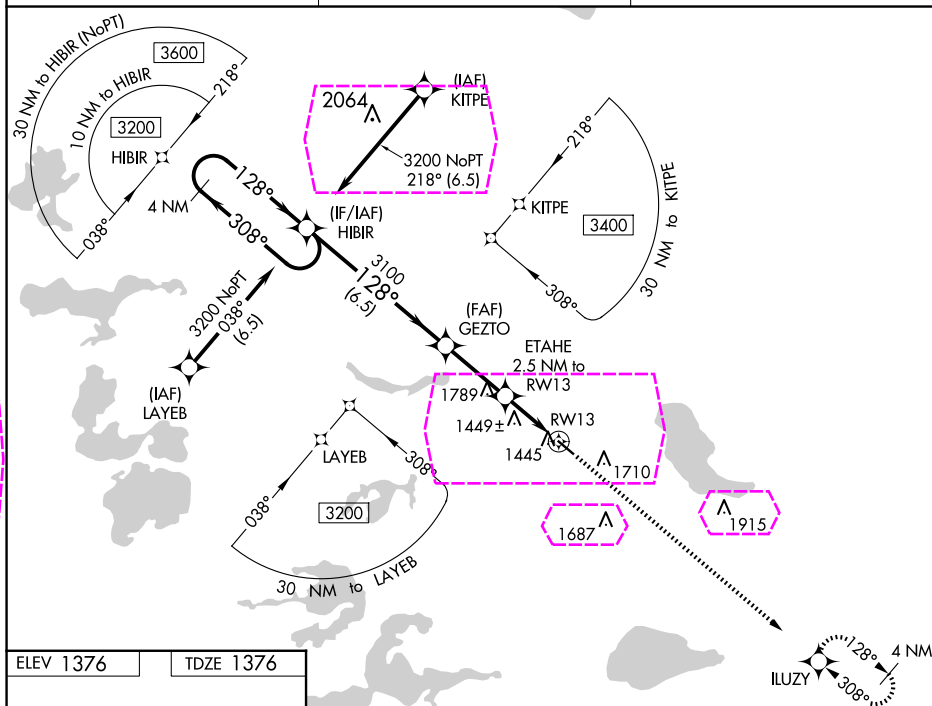
RNAV (GPS) RWY 13
PERHAM MUNI (16D)

T Baro-VNAV NA. DME/DME RNP-0.3 NA. Helicopter visibility reduction below $\frac{3}{4}$ SM NA. Use Detroit Lakes altimeter setting; when not received, use Wadena altimeter setting.

MISSED APPROACH: Climb to 3000 direct ILUZY and hold.

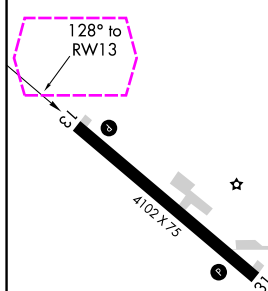
MINNEAPOLIS CENTER
126.1 269.2

GCO
121.725

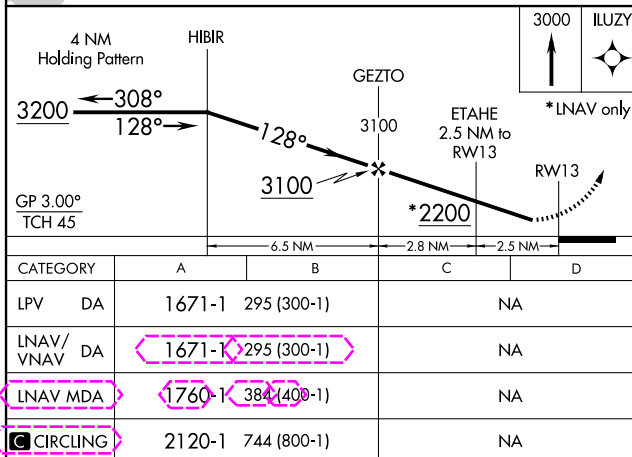
CTAF
122.90

ELEV 1376

TDZE 1376



MIRL Rwy 13-31 **L**
REIL Rwy 13 and 31 **L**



PERHAM, MINNESOTA
Orig-A 02APR15

46°37'N-95°36'W

PERHAM MUNI (16D)
RNAV (GPS) RWY 13

PERHAM, MINNESOTA

AL-9270 (FAA)

25191

WAAS CH 62933 W13A	APP CRS 128°	Rwy Ldg TDZE 1376 Apt Elev 1376
--	------------------------	---

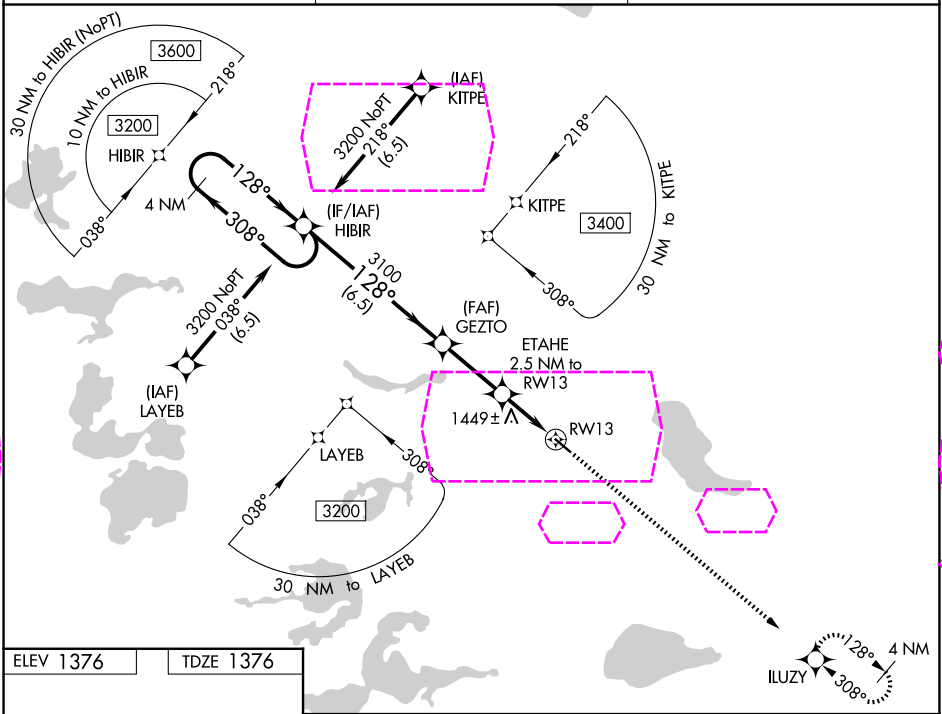
RNAV (GPS) RWY 13

PERHAM MUNI (16D)

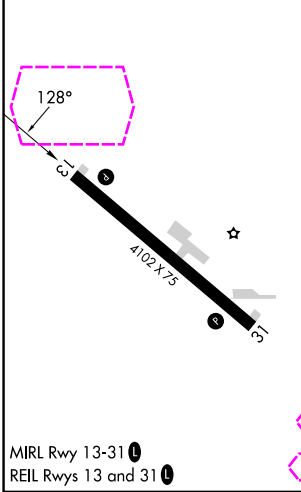
Baro-VNAV NA. DME/DME RNP-0.3 NA. Helicopter visibility reduction below ¾ SM NA. Use Detroit Lakes altimeter setting; when not received, use Wadena altimeter setting.

MISSED APPROACH: Climb to 3000 direct ILUZY and hold.

MINNEAPOLIS CENTER 126.1 269.2	GCO 121.725	CTAF 122.9
--	-----------------------	----------------------



ELEV 1376	TDZE 1376
-----------	-----------



4 NM Holding Pattern		HIBIR	GEZTO	ETAHE 2.5 NM to RW13	RW13
3200		3100	3100	*2200	
GP 3.00°					
TCH 45					
6.5 NM		2.8 NM	2.5 NM		
CATEGORY	A	B	C	D	
LPV DA	1671-1	295 (300-1)	NA		
LNAV/VNAV DA	1811-1 ¼	435 (500-1 ¼)	NA		
LNAV MDA	1800-1	424 (500-1)	NA		
CIRCLING	2120-1	744 (800-1)	NA		

PERHAM, MINNESOTA

Orig-B 10JUL25

46°37'N-95°36'W

RNAV (GPS) RWY 13

PERHAM MUNI (16D)