

46°21'N - 87°24'W

MARQUETTE, MICHIGAN

AL-773 (FAA)

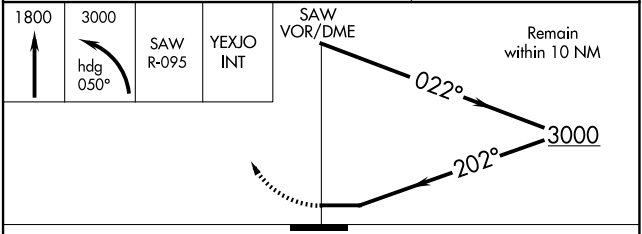
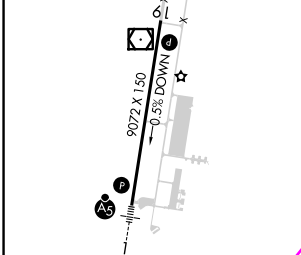
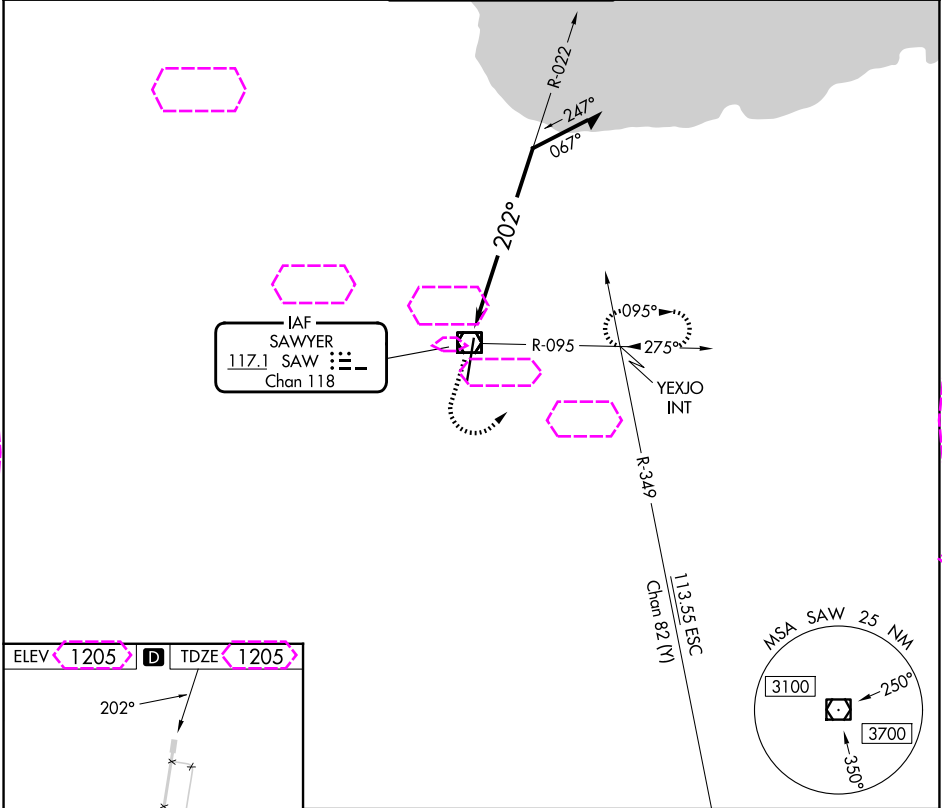
25191

VOR/DME SAW 117.1 Chan 118	APP CRS 202°	Rwy Ldg TDZE Apt Elev	9072 1205 1205
--	------------------------	-----------------------------	---

VOR RWY 19
MARQUETTE/SAWYER RGNL (SAW)

MISSED APPROACH: Climb to 1800 then climbing left turn to 3000 on heading 050° and SAW VOR/DME R-095 to YEXJO Int and hold.

AWOS-3PT 118.375	MINNEAPOLIS CENTER 119.1 290.2	SAWYER TOWER ★ 119.975 (CTAF) 0	GND CON 121.65	UNICOM 122.7
----------------------------	--	--	--------------------------	------------------------



CATEGORY	A	B	C	D
S-19	1780-1	575 (600-1)	1780-1½	575 (600-1½)
CIRCLING	1780-1	575 (600-1)	1820-1¾ 615 (700-1¾)	1820-2 615 (700-2)

MARQUETTE, MICHIGAN

Amdt 1A 10JUL25

46°21'N - 87°24'W

MARQUETTE/SAWYER RGNL (SAW)

VOR RWY 19

EC-1, 10 JUL 2025 to 07 AUG 2025

EC-1, 10 JUL 2025 to 07 AUG 2025