

MARQUETTE, MICHIGAN

AL-773 (FAA)

24249

WAAS CH 97431 W01A	APP CRS 013°	Rwy Idg TDZE 1180 Apt Elev 1204
--	------------------------	---

RNAV (GPS) RWY 1
MARQUETTE/SAWYER RGNL (SAW)

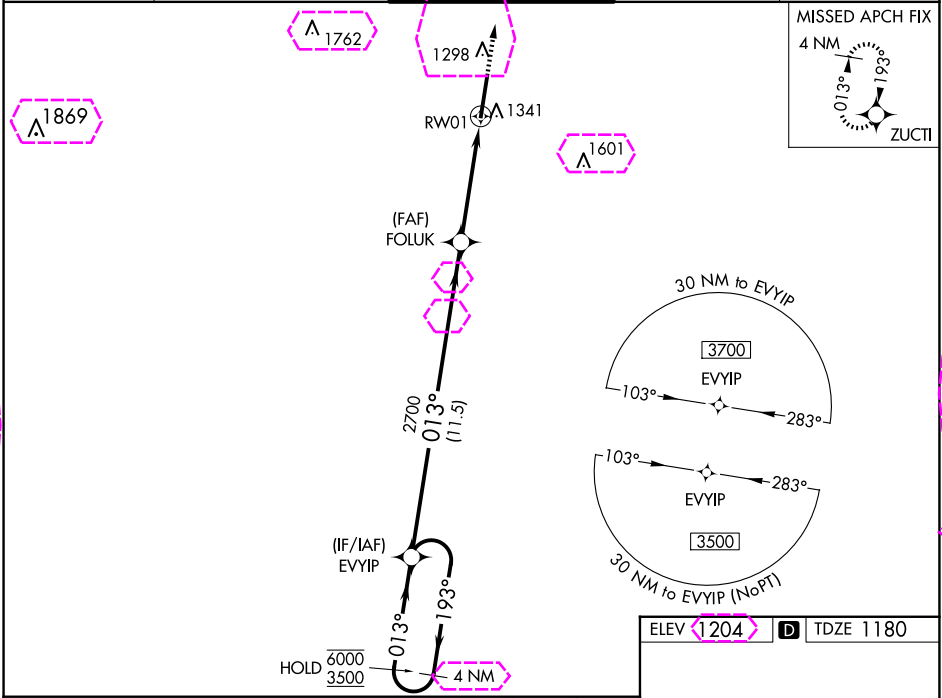
RNP APCH.

For inop ALS, increase LNAV Cat C/D visibility to 1½ SM.
For uncompensated Baro-VNAV systems, LNAV/VNAV NA below -17°C or above 54°C.

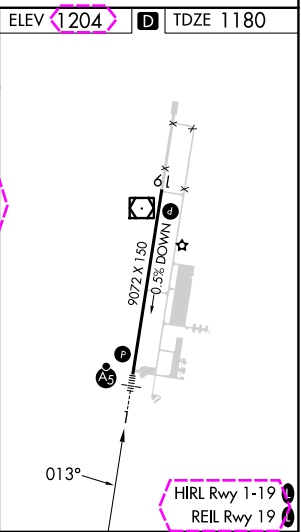
MALSRL

MISSED APPROACH: Climb to 3500 direct ZUCTI and hold.

AWOS-3PT 118.375	MINNEAPOLIS CENTER 119.1 290.2	SAWYER TOWER ★ 119.975 (CTAF) 0	GND CON 121.65	UNICOM 122.7
----------------------------	--	--	--------------------------	------------------------



4 NM Holding Pattern	6000	3500	193°	013°	013°	2700	FOLUK	2700	3500	ZUCTI
GP 3.00° TCH 50										
CATEGORY	A	B	C	D						
LPV DA	1380-½ 200 (200-½)									
LNAV/VNAV DA	1503-½ 323 (300-½)									
LNAV MDA	1600-½	420 (400-½)	1600-¾ 420 (400-¾)							
CIRCLING	1680-1	476 (500-1)	1820-1¾ 616 (700-1¾)		1820-2 616 (700-2)					



MARQUETTE, MICHIGAN
Amdt 1A 23APR20

46°21'N - 87°24'W

MARQUETTE/SAWYER RGNL (SAW)
RNAV (GPS) RWY 1

EC-1, 12 JUN 2025 to 10 JUL 2025

EC-1, 12 JUN 2025 to 10 JUL 2025

MARQUETTE, MICHIGAN

AL-773 (FAA)

25191

WAAS CH 97431 W01A	APP CRS 013°	Rwy Ldg TDZE 1180 Apt Elev 1205
--	------------------------	---

RNAV (GPS) RWY 1
MARQUETTE/SAWYER RGNL (SAW)

RNP APCH - GPS.

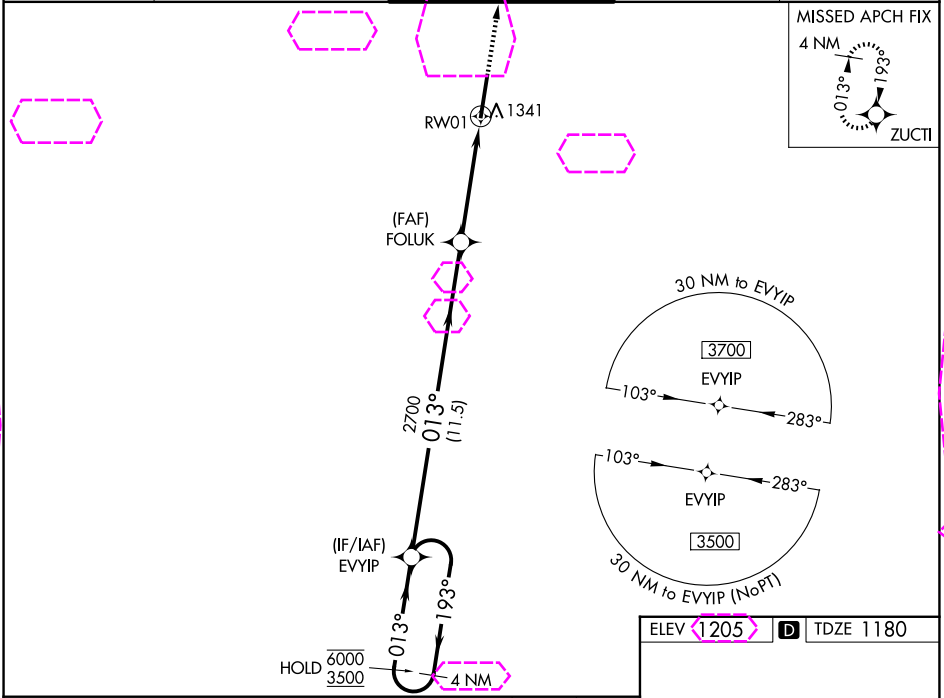
▼

For uncompensated Baro-VNAV systems, LNAV/VNAV NA below -17°C or above 54°C.
For inop ALS, increase LNAV Cat C/D visibility to 1½ SM.

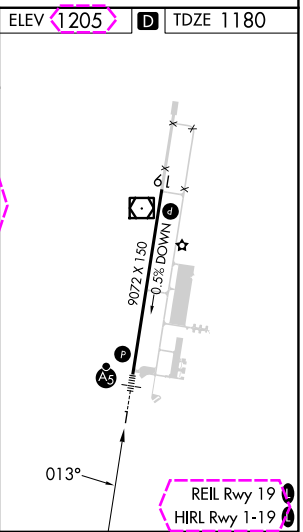
MALSR

MISSED APPROACH:
Climb to 3500 direct
ZUCTI and hold.

AWOS-3PT 118.375	MINNEAPOLIS CENTER 119.1 290.2	SAWYER TOWER ★ 119.975 (CTAF) 0	GND CON 121.65	UNICOM 122.7
----------------------------	--	---	--------------------------	------------------------



4 NM Holding Pattern				
CATEGORY	A	B	C	D
LPV DA	1380-½		200 (200-½)	
LNAV/VNAV DA	1503-½		323 (300-½)	
LNAV MDA	1600-½	420 (400-½)	1600-¾	420 (400-¾)
CIRCLING	1680-1	475 (500-1)	1820-1¾ 615 (700-1¾)	1820-2 615 (700-2)



MARQUETTE, MICHIGAN
Amdt **1B** 10JUL25

46°21'N - 87°24'W

MARQUETTE/SAWYER RGNL (SAW)
RNAV (GPS) RWY 1

EC-1, 10 JUL 2025 to 07 AUG 2025

EC-1, 10 JUL 2025 to 07 AUG 2025