

MARQUETTE, MICHIGAN

AL-773 (FAA)

24249

WAAS CH 86616 W19A	APP CRS 193°	Rwy Idg TDZE Apt Elev	9072 1204 1204
--	------------------------	-----------------------------	---

RNAV (GPS) RWY 19

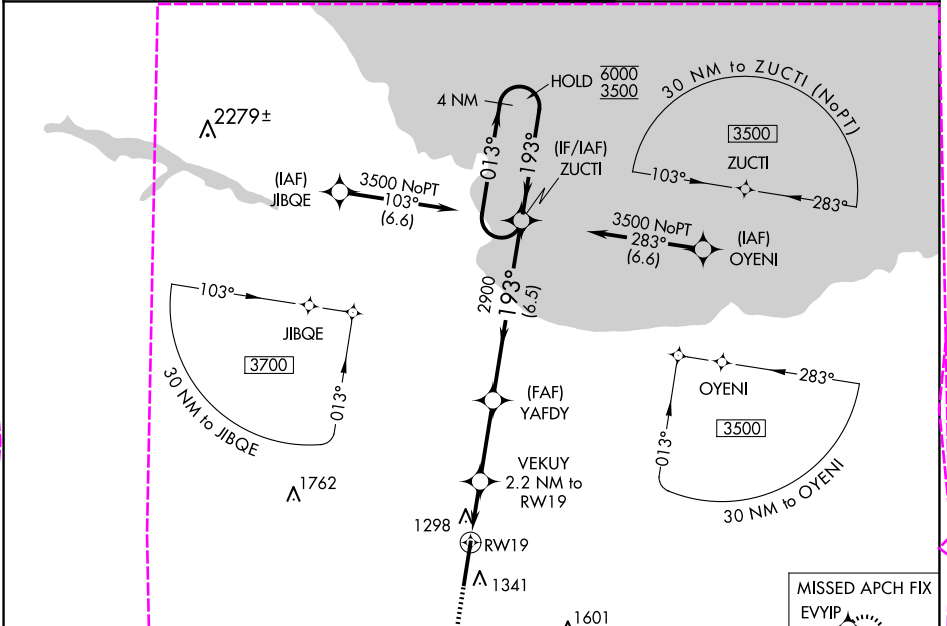
MARQUETTE/SAWYER RGNL (SAW)

RNP APCH

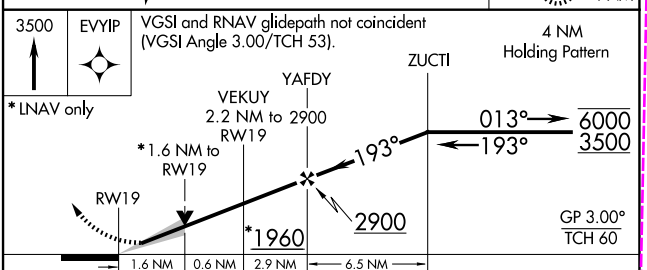
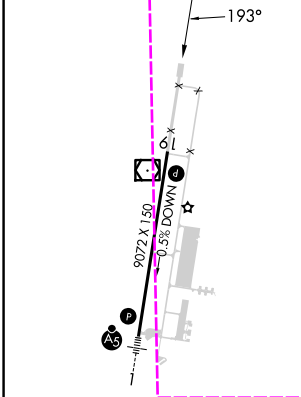
For uncompensated Baro-VNAV systems, LNAV/VNAV NA below -17°C or above 54°C.

MISSED APPROACH: Climb to 3500 direct EVYIP and hold.

AWOS-3PT 118.375	MINNEAPOLIS CENTER 119.1 290.2	SAWYER TOWER ★ 119.975 (CTAF) 0	GND CON 121.65	UNICOM 122.7
----------------------------	--	---	--------------------------	------------------------



ELEV 1204	TDZE 1204
------------------	------------------



CATEGORY	A	B	C	D
LPV DA	1404- ³ / ₄	200 (200- ³ / ₄)		
LNAV/VNAV DA	1521- ⁷ / ₈	317 (400- ⁷ / ₈)		
LNAV MDA	1620-1	1620-1	1620-1	1620-1
CIRCLING	1680-1	1680-1	1820-2	1820-2

MARQUETTE, MICHIGAN
Amdt 2 13SEP18

46°21'N - 87°24'W

MARQUETTE/SAWYER RGNL (SAW)
RNAV (GPS) RWY 19

EC-1, 12 JUN 2025 to 10 JUL 2025

EC-1, 12 JUN 2025 to 10 JUL 2025

MARQUETTE, MICHIGAN

AL-773 (FAA)

25191

WAAS CH 86616 W19A	APP CRS 193°	Rwy Ldg TDZE Apt Elev	9072 1205 1205
--	------------------------	-----------------------------	---

RNAV (GPS) RWY 19

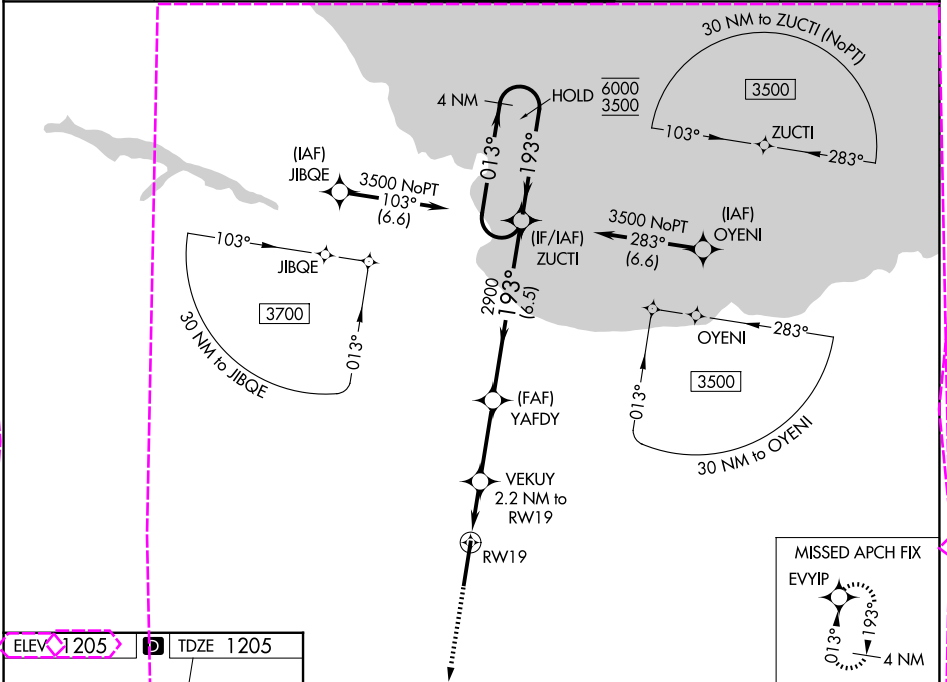
MARQUETTE/SAWYER RGNL (SAW)

RNP APCH - GPS.

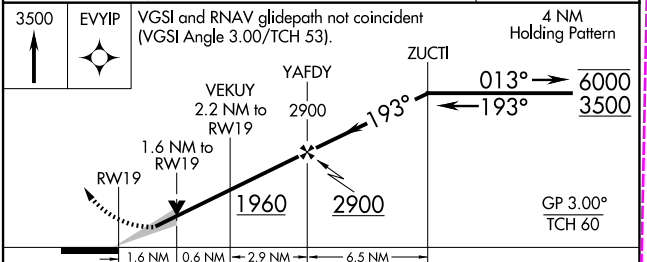
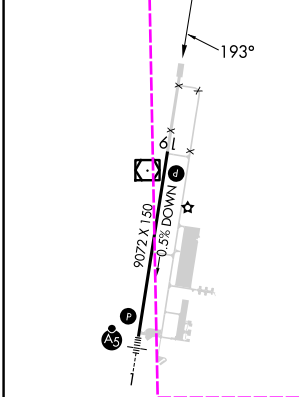
For uncompensated Baro-VNAV systems, LNAV/VNAV NA below -17°C or above 54°C.

MISSED APPROACH: Climb to 3500 direct EVYIP and hold.

AWOS-3PT 118.375	MINNEAPOLIS CENTER 119.1 290.2	SAWYER TOWER ★ 119.975 (CTAF) 0	GND CON 121.65	UNICOM 122.7
----------------------------	--	---	--------------------------	------------------------



ELEV 1205	TDZE 1205
------------------	------------------



CATEGORY	A	B	C	D
LPV DA	1405- ³ / ₄ 200 (200- ³ / ₄)			
LNAV/VNAV DA	1522- ⁷ / ₈ 317 (400- ⁷ / ₈)			
LNAV MDA	1620-1	115 (500-1)	1620-1 ¹ / ₈	115 (500-1 ¹ / ₈)
CIRCLING	1680-1	175 (500-1)	1820-1 ³ / ₄ 115 (700-1 ³ / ₄)	1820-2 115 (700-2)

MARQUETTE, MICHIGAN
Amdt 2A 10JUL25

46°21'N-87°24'W

MARQUETTE/SAWYER RGNL (SAW)
RNAV (GPS) RWY 19

EC-1, 10 JUL 2025 to 07 AUG 2025

EC-1, 10 JUL 2025 to 07 AUG 2025