

BROWNWOOD, TEXAS

AL-705 (FAA)

24305

LOC I-BWD 109.1	APP CRS 175°	Rwy Idg TDZE 1387 Apt Elev 1387
---------------------------	------------------------	---

LOC RWY 17
BROWNWOOD RGNL (BWD)

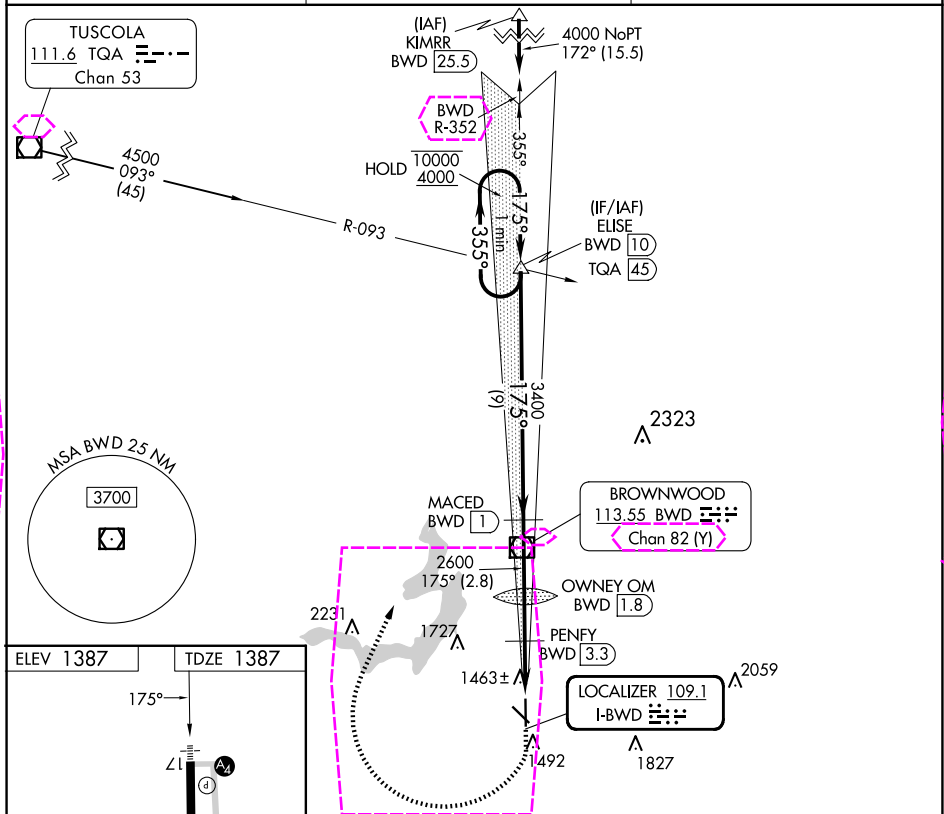
DME required. RADAR required for procedure entry at KIMRR.

▼ Rwy 17 helicopter visibility reduction below $\frac{3}{4}$ SM NA. DME from BWD VOR/DME. DME use requires simultaneous reception of I-BWD and BWD DME.

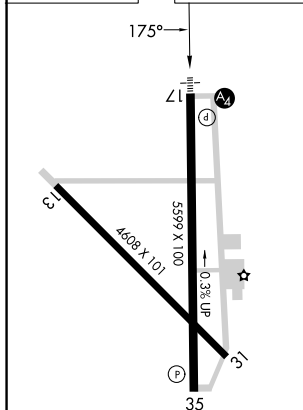


MISSED APPROACH: Climb to 1800 then climbing right turn to 4000 on heading 021° and on BWD VOR/DME R-356 to ELISE INT/BWD 10 DME and hold.

AWOS-3 118.325	FORT WORTH CENTER 127.45 290.3	UNICOM 122.8 (CTAF)
--------------------------	--	-------------------------------



ELEV 1387 TDZE 1387



MIRL Rwy 13-31 and 17-35

BROWNWOOD, TEXAS

Amdt 5 31OCT24

31°48'N-98°57'W

BROWNWOOD RGNL (BWD)

LOC RWY 17

BROWNWOOD, TEXAS

AL-705 (FAA)

25191

LOC I-BWD 109.1	APP CRS 175°	Rwy Ldg TDZE 1387 Apt Elev 1387
---------------------------	------------------------	---

LOC RWY 17
BROWNWOOD RGNL (BWD)

DME required. RADAR required for procedure entry at KIMRR.

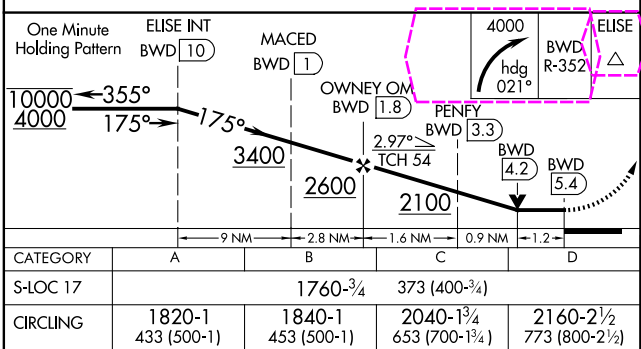
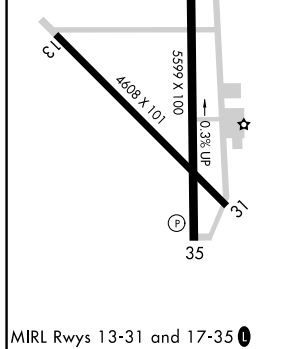
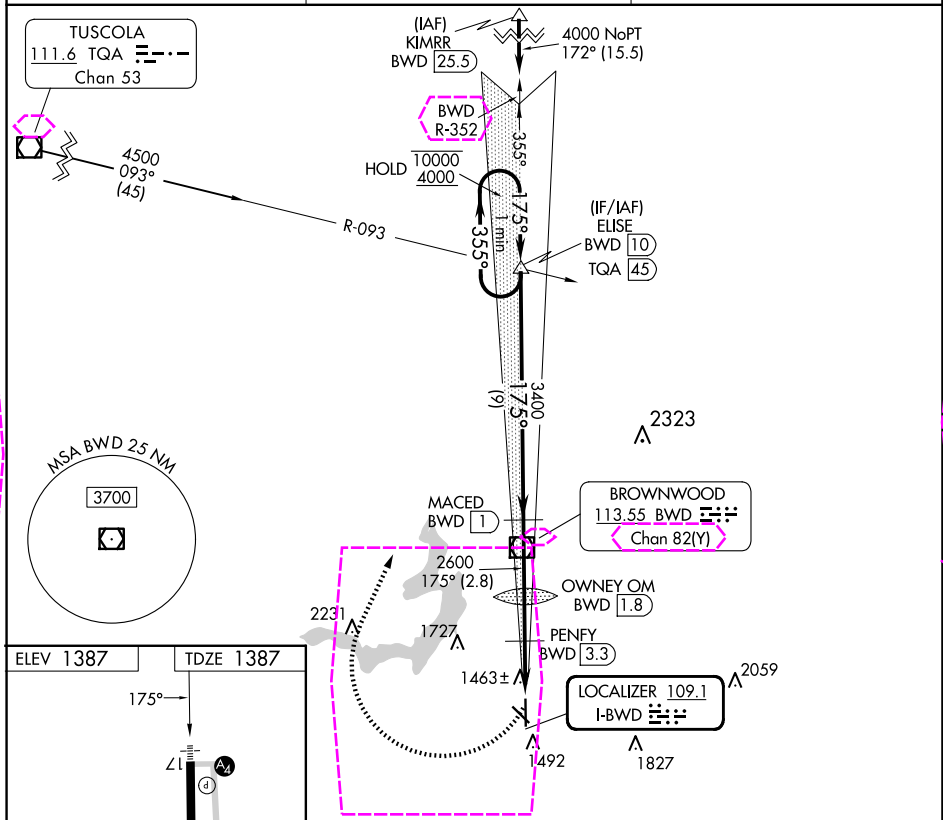
▼ Rwy 17 helicopter visibility reduction below $\frac{3}{4}$ SM NA. DME from BWD VOR/DME. DME use requires simultaneous reception of I-BWD and BWD DME.

MALS



MISSED APPROACH: Climbing right turn to 4000 on heading 021° and on BWD VOR/DME R-352 to ELISE INT/BWD 10 DME and hold.

AWOS-3 118.325	FORT WORTH CENTER 127.45 290.3	UNICOM 122.8 (CTAF)
--------------------------	--	-------------------------------



BROWNWOOD, TEXAS

Amdt 5A 10JUL25

31°48'N-98°57'W

BROWNWOOD RGNL (BWD)
LOC RWY 17

SC-3, 10 JUL 2025 to 07 AUG 2025

SC-3, 10 JUL 2025 to 07 AUG 2025