

NANTUCKET, MASSACHUSETTS

AL-659 (FAA)

24305

WAAS CH 93612 W24A	APP CRS 241°	Rwy Idg 6303 TDZE 47 Apt Elev 47
--	------------------------	---

RNAV (GPS) RWY 24

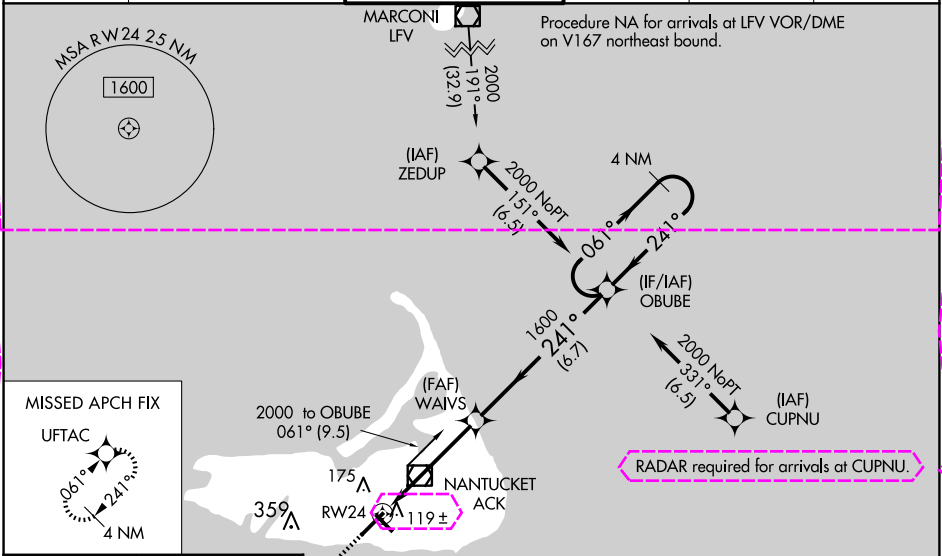
NANTUCKET MEML (ACK)

▼ For uncompensated Baro-VNAV systems, LNAV/VNAV NA below -12°C (11°F) or above 54°C (130°F). DME/DME RNP-0.3 NA. Baro-VNAV and VDP NA when using Hyannis altimeter setting. When local altimeter setting not received, use Hyannis altimeter setting and increase LPV DA to 310 feet and LNAV/VNAV DA to 363 feet and all MDA 80 feet, increase LNAV/VNAV all Cats visibility to RVR 3000 and LNAV Cats C/D visibility to RVR 4000 and Circling Cats C/D visibility ¼ SM. For inop SSALR increase LNAV/VNAV all Cats visibility to RVR 4000. For inop SSALR when using Hyannis altimeter setting, increase LPV all Cats visibility to RVR 4500, LNAV/VNAV all Cats to RVR 5000, and LNAV Cats C/D to RVR 6000. ** 2400 RVR when using Hyannis altimeter setting.

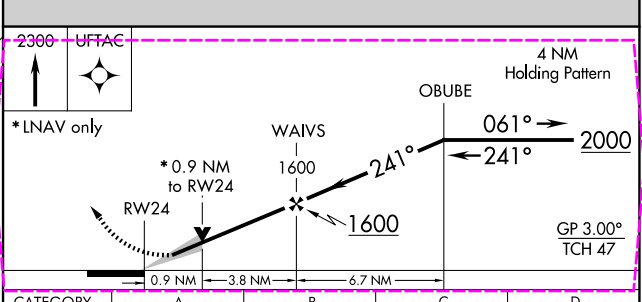
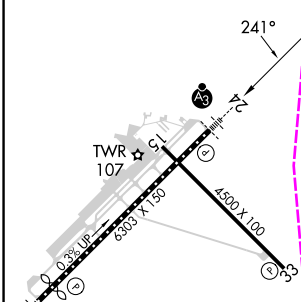
SSALR

MISSED APPROACH:
Climb to 2300 direct
UFTAC and hold.

ATIS 127.5	BOSTON APP CON 126.1 318.1	NANTUCKET TOWER ★ 118.3 (CTAF) 0	GND CON 132.5	CLNC DEL 119.375	UNICOM 122.95
----------------------	--------------------------------------	--	-------------------------	----------------------------	-------------------------



ELEV 47	D	TDZE 47
----------------	----------	----------------



CATEGORY	A	B	C	D
LPV DA**	247/18 200 (200-½)			
LNAV/VNAV DA	300/24 253 (300-½)			
LNAV MDA	380/24 333 (400-½)		380/26 333 (400-½)	
CIRCLING	480-1 433 (500-1)	500-1 453 (500-1)	720-2 673 (700-2)	720-2¼ 673 (700-2¼)

NANTUCKET, MASSACHUSETTS

Amdt **1B 07DEC17**

41°15'N-70°04'W

RNAV (GPS) RWY 24

NANTUCKET MEML (ACK)

NE-1, 10 JUL 2025 to 07 AUG 2025