

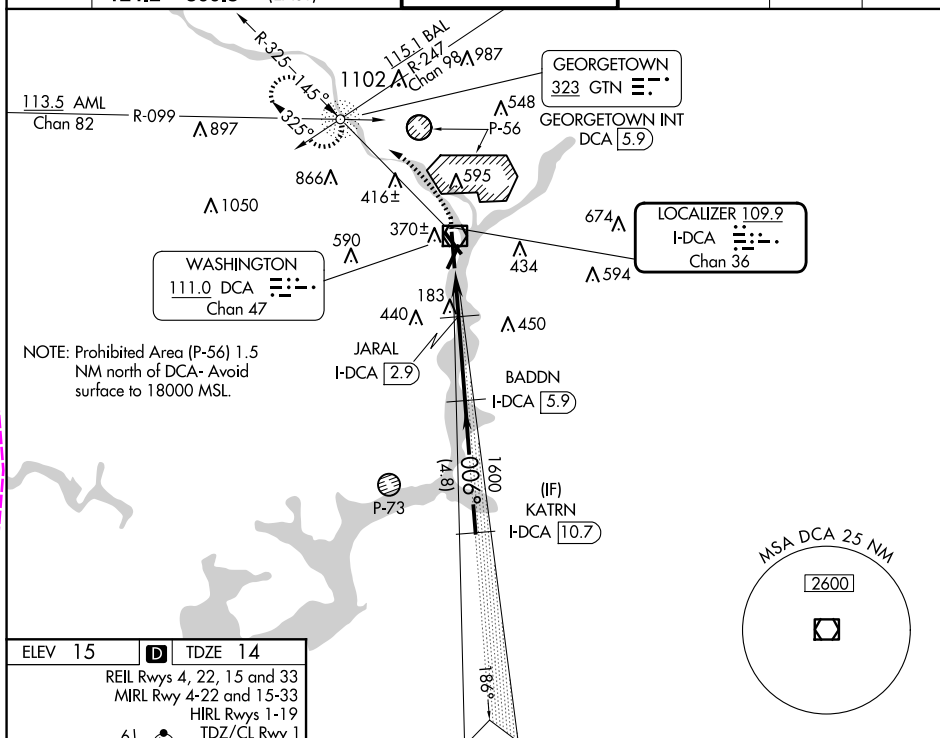



| | | | |
|----------------|-------------|----------|-------------|
| LOC/DME I-DCA | APP CRS | Rwy Ldg | 6869 |
| 109.9 | | TDZE | 14 |
| Chan 36 | 006° | Apt Elev | 15 |

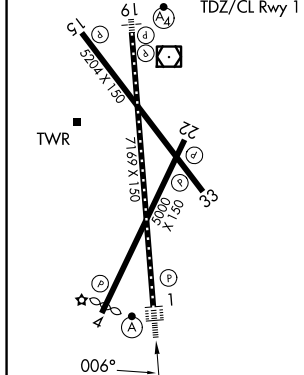
COPTER ILS or LOC/DME RWY 1

RONALD REAGAN WASHINGTON NTL (DCA)

| | | | | | | | |
|--|---|---|--|---|-------------------------------|---------------------------|-------|
|  NA | | ALSF-2  | | MISSED APPROACH: Climb to 420 then climbing left turn to 2200 on DCA VOR/DME R-325 to GTN NDB/INT/DCA 5.9 DME and hold. | | | |
| D-ATIS 132.65 | POTOMAC APP CON 119.85 239.25 (WEST/SOUTH) 124.2 360.8 (EAST) | | WASHINGTON TOWER 119.1 257.6 | | GND CON 121.7 257.6 | CLNC DEL 128.25 | CPDLC |



| | | |
|--|----------|---------|
| ELEV 15 | D | TDZE 14 |
| REIL Rwy 4, 22, 15 and 33 MIRL Rwy 4-22 and 15-33 HIRL Rwy 1-19 61  TDZ/CL Rwy 1 | | |



Use I-DCA DME when on the localizer course.

420
↑
DCA R-325
GTN

* LOC only.
I-DCA 1.1

* I-DCA 2.4

JARAL I-DCA 2.9

* 620

BADDN I-DCA 5.9

1600

KATRN I-DCA 10.7

2500

006°

GS 3.00°
HCH 54

1.3 NM
0.5
3 NM
4.8 NM

| CATEGORY | COPPER |
|----------|----------------------|
| H-ILS 1 | 114/12 100 (100-1/8) |
| H-LOC 1 | 480/24 466 (500-1/2) |
| H-ILS 1 | CAT II RA 106 |

COPTER ILS CATEGORY II - SPECIAL AIRCREW & AIRCRAFT CERTIFICATION REQUIRED

WASHINGTON, DC

Amdt 1B 16JUN22

RONALD REAGAN WASHINGTON NTL (DCA)

38°51'N-77°02'W

COPTER ILS or LOC/DME RWY 1

WASHINGTON, DC

AL-443 (FAA)

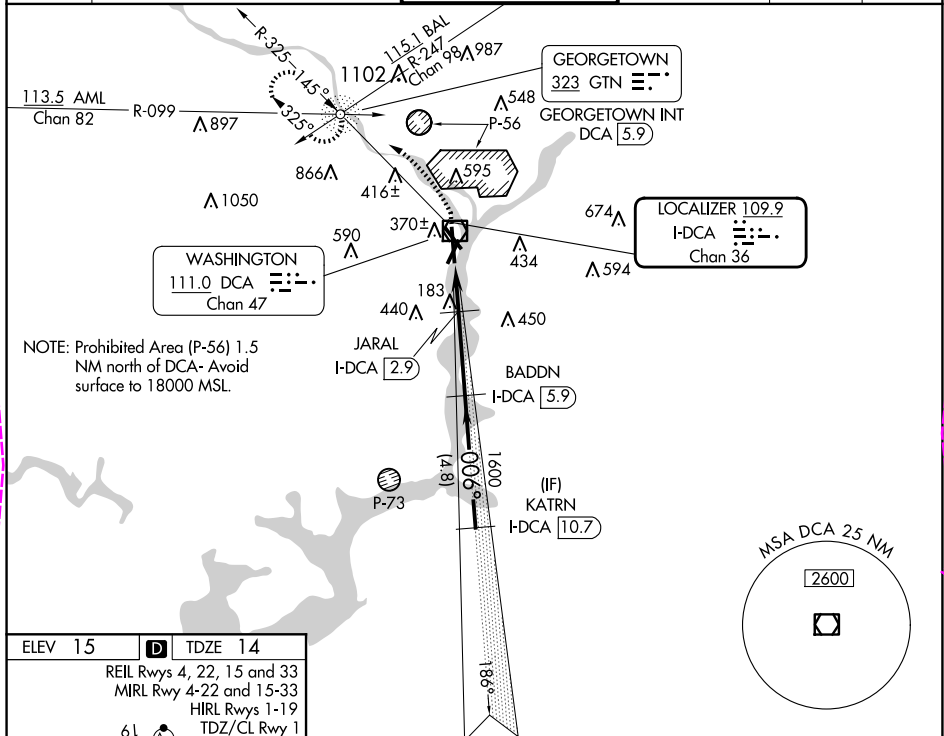
25191

| | | |
|----------------|-------------|-------------|
| LOC/DME I-DCA | APP CRS | Rwy Ldg |
| 109.9 | 006° | 6869 |
| Chan 36 | TDZE | 14 |
| | Apt Elev | 15 |

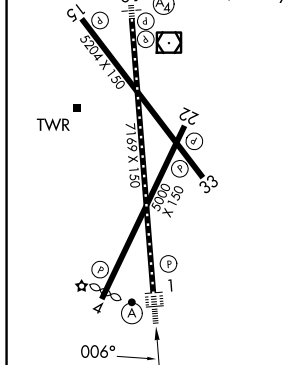
COPTER ILS or LOC/DME RWY 1

RONALD REAGAN WASHINGTON NTL (DCA)

| | | | | | | |
|---|---|---|---|--------------------|-------|--|
| <div><div><div>▼</div><div>▲</div></div><div>NA</div></div> | | ALS-F-2 <div><div>Ⓐ</div><div><div><div></div><div></div><div></div></div></div></div> | MISSED APPROACH: Climb to 420 then climbing left turn to 2200 on DCA VOR/DME R-325 to GTN NDB/INT/DCA 5.9 DME and hold. | | | |
| D-ATIS 132.65 | POTOMAC APP CON 119.85 239.25 (WEST/SOUTH) 124.2 360.8 (EAST) | WASHINGTON TOWER 119.1 257.6 | GND CON 121.7 257.6 | CLNC DEL 128.25 | CPDLC | |



| | | |
|---------------------------|----------|---------|
| ELEV 15 | D | TDZE 14 |
| REIL Rwy 4, 22, 15 and 33 | | |
| MIRL Rwy 4-22 and 15-33 | | |
| HIRL Rwy 1-19 | | |
| TDZ/CL Rwy 1 | | |



| | | | |
|-------------|----------------------|-----------------|---|
| 420 | 2200 | GTN | Use I-DCA DME when on the localizer course. |
| DCA R-325 | | | KATR N I-DCA 10.7 |
| * LOC only. | * I-DCA | JARAL I-DCA 2.9 | BADDN I-DCA 5.9 |
| I-DCA 1.1 | | | |
| 1.3 NM | 0.5 | 3 NM | 4.8 NM |
| CATEGORY | | | |
| COPTER | | | |
| H-ILS 1 | 114/12 100 (100-1/4) | | |
| H-LOC 1 | 480/24 466 (500-1/2) | | |
| H-ILS 1 | CAT II RA 106 | | |

COPTER ILS CATEGORY II - SPECIAL AIRCREW & AIRCRAFT CERTIFICATION REQUIRED

WASHINGTON, DC
Amdt 1B 16JUN22

38°51'N-77°02'W
RONALD REAGAN WASHINGTON NTL (DCA)
COPTER ILS or LOC/DME RWY 1

NE-3, 10 JUL 2025 to 07 AUG 2025

NE-3, 10 JUL 2025 to 07 AUG 2025