

SACRAMENTO, CALIFORNIA

AL-356 (FAA)

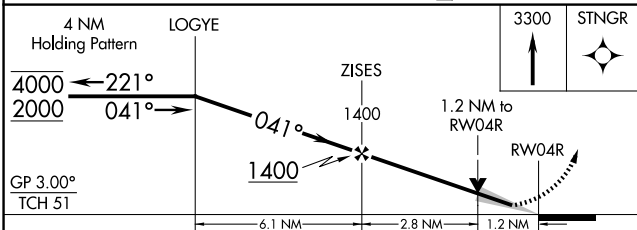
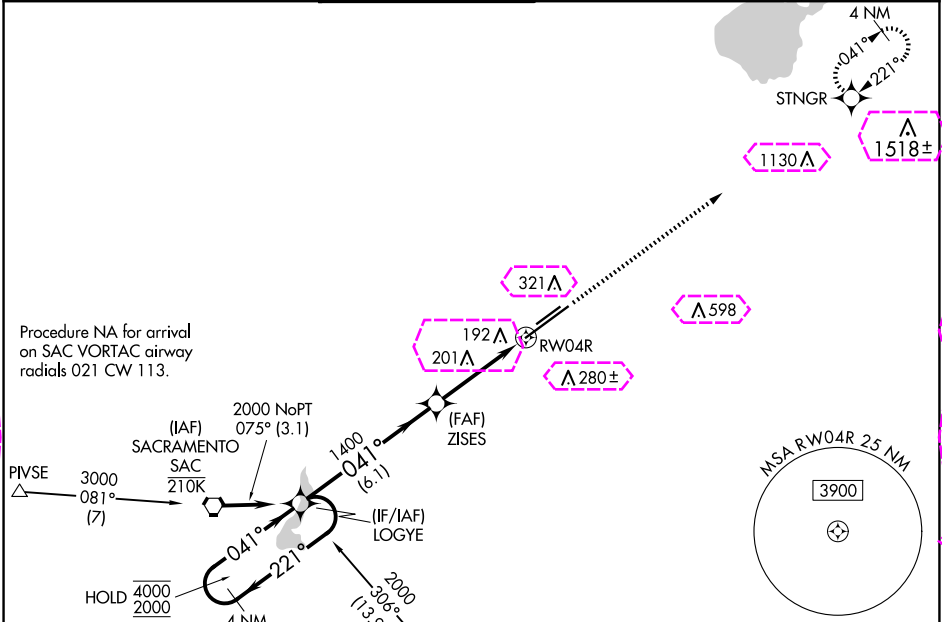
25107

WAAS CH 45601 W04A	APP CRS 041°	Rwy Idg 11301 TDZE 81 Apt Elev 98
--	------------------------	--

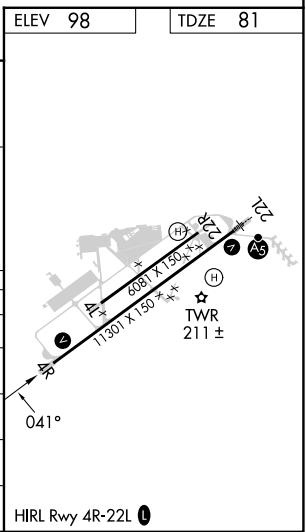
RNAV (GPS) RWY 4R
SACRAMENTO MATHER (MHR)

RNP APCH - GPS.	MISSED APPROACH: Climb to 3300 direct STNGR and hold. *Missed approach requires minimum climb of 210 feet per NM to 2500.
Circled NA northwest of Rwy 4R-22L. For uncompensated Baro-VNAV systems, LNAV/VNAV NA below -1.5°C or above 54°C.	

ATIS 118.325	NORCAL APP CON 127.4 317.5	MATHER TOWER ★ 120.65 (CTAF) 0 282.25	GND CON 121.85 307.9	CLNC DEL 121.85 307.9	UNICOM 122.95
------------------------	--------------------------------------	---	--------------------------------	---------------------------------	-------------------------



CATEGORY	A	B	C	D
LPV DA*		331/40	250 (300-¾)	
LNAV/VNAV DA*		365/45	284 (300-⅞)	
LNAV MDA*	520/55	439 (500-1)	520-1¼	439 (500-1¼)
LNAV MDA	540/55 459 (500-1)	560/55 479 (500-1)	580-1⅓	499 (500-1⅓)
CIRCLING	560-1 462 (500-1)	580-1 482 (500-1)	600-1½ 502 (600-1½)	740-2 642 (700-2)



SW-2, 12 JUN 2025 to 10 JUL 2025

SW-2, 12 JUN 2025 to 10 JUL 2025

SACRAMENTO, CALIFORNIA

AI-356 (FAA)

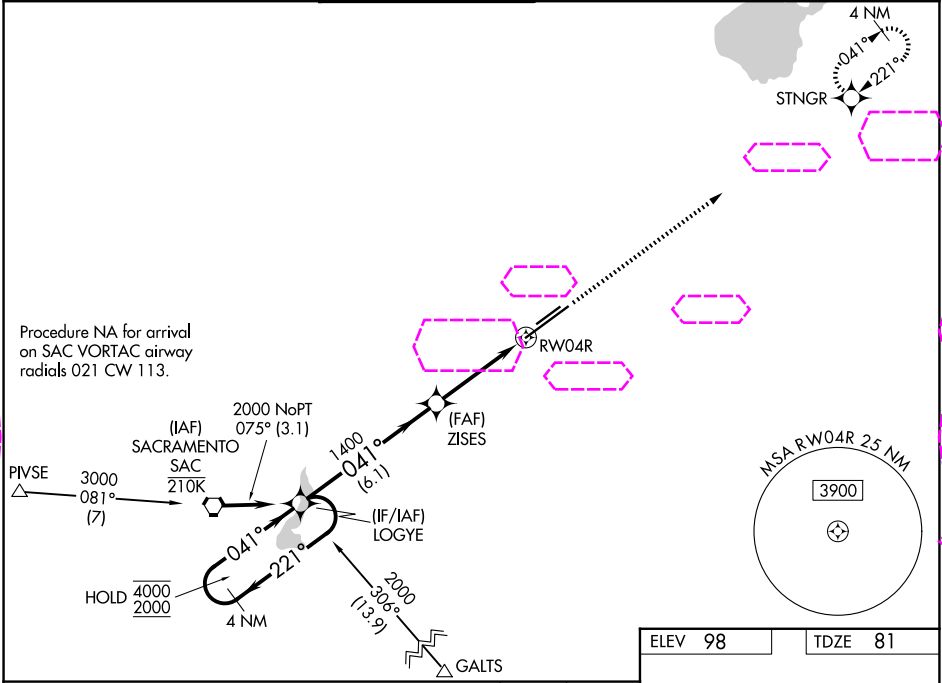
25191

WAAS CH 45601 W04A	APP CRS 041°	Rwy Ldg. 11301 TDZE 81 Apt Elev 98
--	------------------------	---

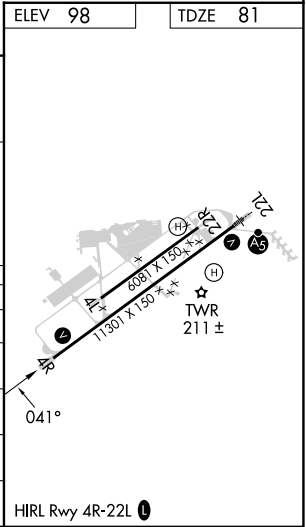
RNAV (GPS) RWY 4R
SACRAMENTO MATHER (MHR)

RNP APCH - GPS.	MISSED APPROACH: Climb to 3300 direct STNGR and hold. *Missed approach requires minimum climb of 210 feet per NM to 2500.
Circling NA northwest of Rwy 4R-22L. For uncompensated Baro-VNAV systems, LNAV/VNAV NA below -1.5°C or above 54°C.	

ATIS 118.325	NORCAL APP CON 127.4 317.5	MATHER TOWER ★ 120.65 (CTAF) 282.25	GND CON 121.85 307.9	CLNC DEL 121.85 307.9	UNICOM 122.95
------------------------	--------------------------------------	---	--------------------------------	---------------------------------	-------------------------



4 NM Holding Pattern		LOGYE	3300		STNGR	
4000 ← 221°	041° →		ZISES	1400	1.2 NM to RW04R	RW04R
2000		041°	1400			
GP 3.00°						
TCH 51						
		6.1 NM	2.8 NM	1.2 NM		
CATEGORY	A	B	C	D		
LPV DA*	331/40		250 (300-¾)			
LNAV/VNAV DA*	365/45		284 (300-⅞)			
LNAV MDA*	520/55	439 (500-1)	520-1¼	439 (500-1¼)		
LNAV MDA	540/55 459 (500-1)	560/55 479 (500-1)	580-1⅜	499 (500-1⅜)		
CIRCLING	560-1 462 (500-1)	580-1 482 (500-1)	600-1½ 502 (600-1½)	740-2 642 (700-2)		



SACRAMENTO, CALIFORNIA
Amdt 3 31OCT24

38°33'N-121°18'W

SACRAMENTO MATHER (MHR)
RNAV (GPS) RWY 4R

SW-2, 10 JUL 2025 to 07 AUG 2025

SW-2, 10 JUL 2025 to 07 AUG 2025