

SACRAMENTO, CALIFORNIA

AL-356 (FAA)

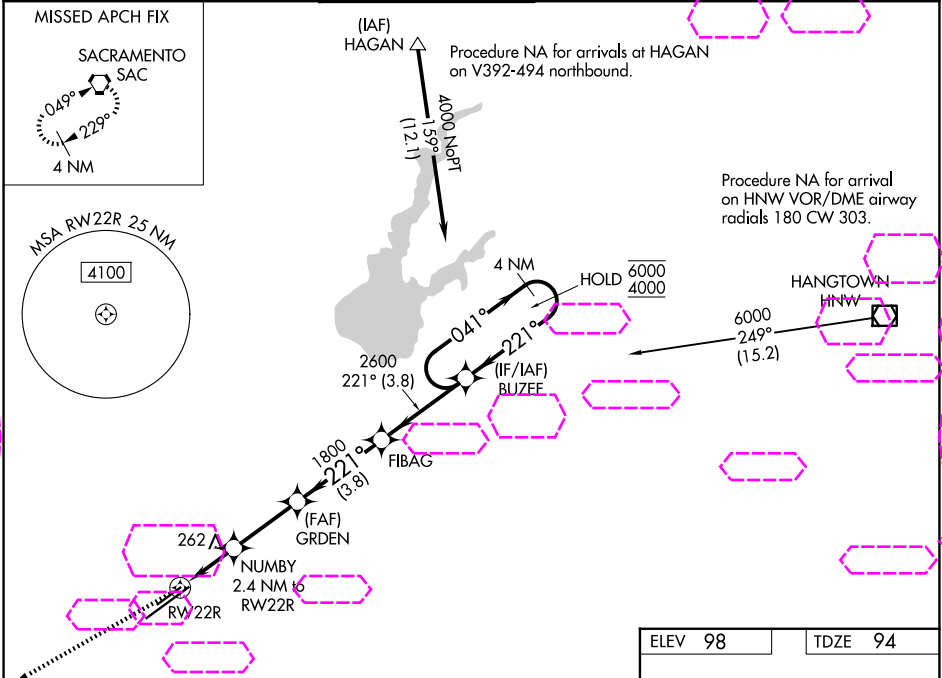
25191

WAAS CH 42943 W22B	APP CRS 221°	Rwy Ldg TDZE Apt Elev	6081 94 98
--	------------------------	-----------------------------	---------------------------------------

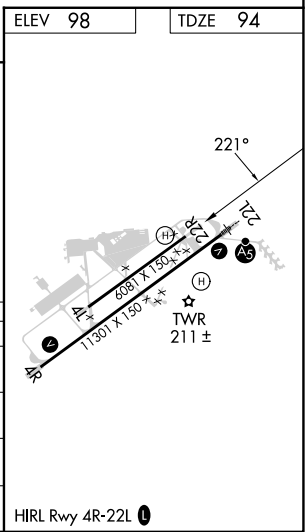
RNAV (GPS) RWY 22R

SACRAMENTO MATHER (MHR)

RNP APCH. ▼ ⚠ Circling NA northwest of Rwy 4L-22R. For uncompensated Baro-VNAV systems, LNAV/VNAV NA below -15°C or above 54°C. Procedure NA at night.		MISSED APPROACH: Climb to 500 then climb to 3000 direct SAC VORTAC and hold.			
ATIS 118.325	NORCAL APP CON 127.4 317.5	MATHER TOWER ★ 120.65 (CTAF) 282.25	GND CON 121.85 307.9	CLNC DEL 121.85 307.9	UNICOM 122.95



500 3000 SAC		GRDEN		FIBAG		BUZEF		4 NM Holding Pattern	
*LNAV only		NUMBY 2.4 NM to RWY22R		1800		2600		041° → 6000 ← 221° 4000	
1.4 NM to RWY22R		900		1800		GP 3.00° TCH 45			
1.4 NM		1 NM		2.8 NM		3.8 NM		3.8 NM	
CATEGORY		A		B		C		D	
LPV DA		294-3/4		200 (200-3/4)					
LNAV/VNAV DA		369-7/8		275 (300-7/8)					
LNAV MDA		580-1 486 (500-1)		580-13/8 486 (500-13/8)					
CIRCLING		580-1 482 (500-1)		600-11/2 502 (600-11/2)		800-2 1/4 702 (800-2 1/4)			



SACRAMENTO, CALIFORNIA
Orig-A 11JUL24

38°33'N-121°18'W

SACRAMENTO MATHER (MHR)
RNAV (GPS) RWY 22R

SW-2, 10 JUL 2025 to 07 AUG 2025

SW-2, 10 JUL 2025 to 07 AUG 2025