

SACRAMENTO, CALIFORNIA

AL-356 (FAA)

25107

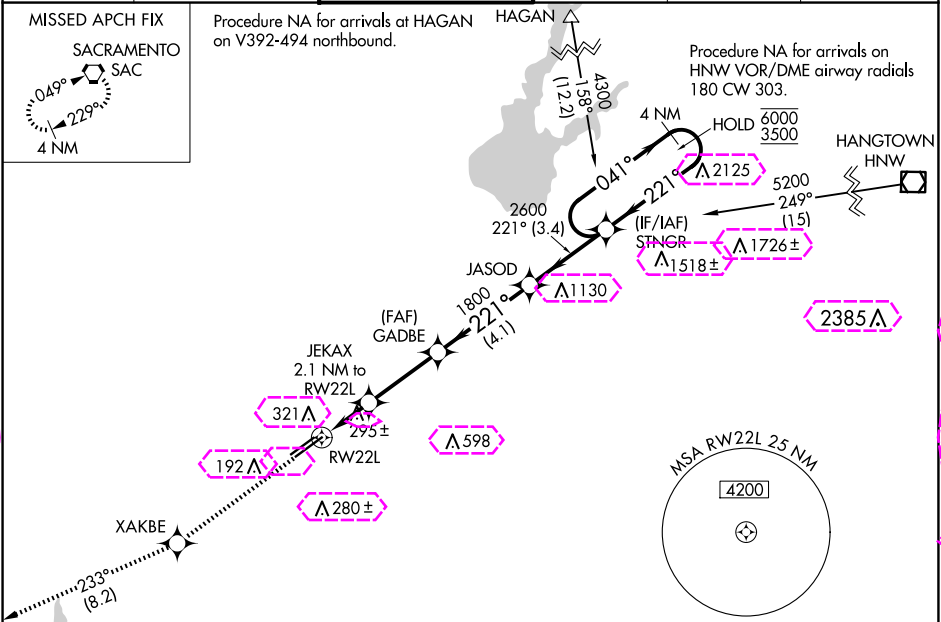
WAAS CH 40225 W22A	APP CRS 221°	Rwy Idg 11301 TDZE 98 Apt Elev 98
--	------------------------	--

RNAV (GPS) RWY 22L

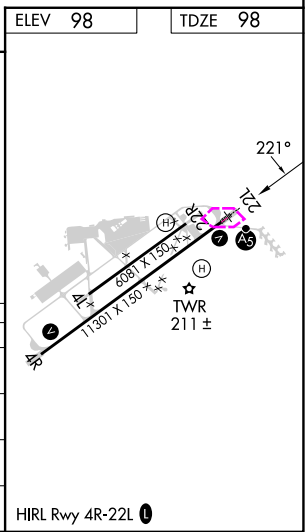
SACRAMENTO MATHER (MHR)

RNP APCH.	MALSR	MISSED APPROACH: Climb to 3000 direct XAKBE and on track 233° to SAC VORTAC and hold.
⚠ Circling NA northwest of Rwy 4R-22L. For uncompensated Baro-VNAV systems, LNAV/VNAV NA below -15°C or above 54°C. For inop ALS, increase LNAV/VNAV all Cats visibility to 1½ SM and LNAV Cat C/D visibility to 1¾ SM.		

ATIS 118.325	NORCAL APP CON 127.4 317.5	MATHER TOWER ★ 120.65 (CTAF) 0 282.25	GND CON 121.85 307.9	CLNC DEL 121.85 307.9	UNICOM 122.95
------------------------	--------------------------------------	---	--------------------------------	---------------------------------	-------------------------



3000	XAKBE	tr 233°	SAC	VGSI and RNAV glidepath not coincident (VGSI Angle 3.00/TCH 50).
*LNAV only	JEKAX 2.1 NM to RW22L	GADBE 1800	JASOD	STNGR 4 NM Holding Pattern
1.4 NM to RW22L	800	1800	2600	GP 3.00° TCH 56
1.4 NM	0.7	3.1 NM	4.1 NM	3.4 NM
CATEGORY	A	B	C	D
LPV DA	298-½ 200 (200-½)			
LNAV/VNAV DA	517-¾ 419 (500-¾)			
LNAV MDA	580-½ 482 (500-½)		580-1 482 (500-1)	
CIRCLING	580-1 482 (500-1)		600-1½ 800-2¼ 502 (600-1½) 702 (800-2¼)	



SACRAMENTO, CALIFORNIA
Amdt 3A 30JAN20

38°33'N-121°18'W

SACRAMENTO MATHER (MHR)
RNAV (GPS) RWY 22L

SACRAMENTO, CALIFORNIA

AL-356 (FAA)

25191

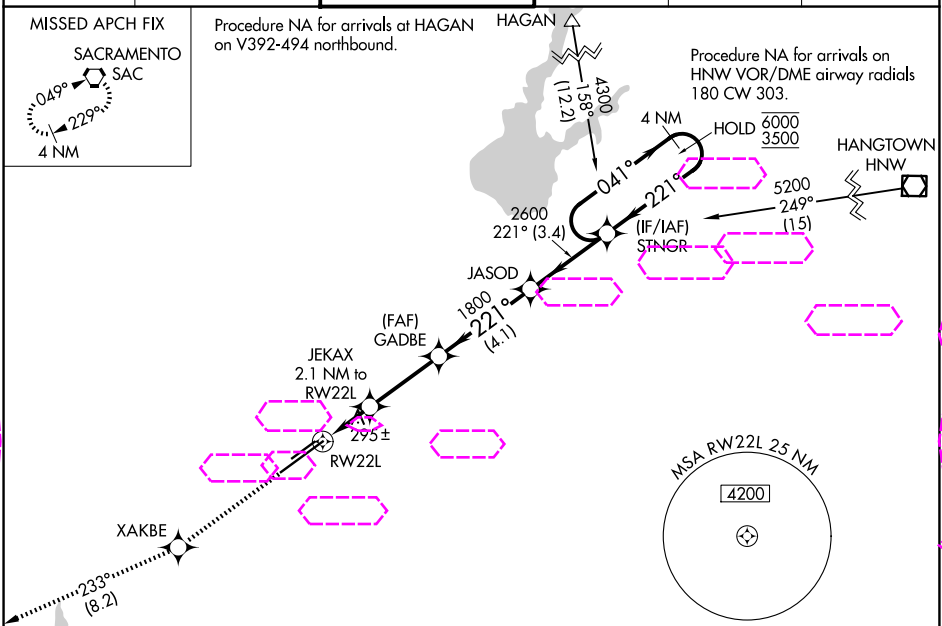
WAAS CH 40225 W22A	APP CRS 221°	Rwy Ldg 11301 TDZE 98 Apt Elev 98
--	------------------------	--

RNAV (GPS) RWY 22L

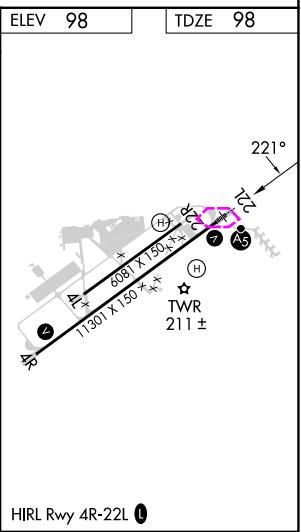
SACRAMENTO MATHER (MHR)

RNP APCH.	MALSR	MISSED APPROACH: Climb to 3000 direct XAKBE and on track 233° to SAC VORTAC and hold.
⚠ Circling NA northwest of Rwy 4R-22L. For uncompensated Baro-VNAV systems, LNAV/VNAV NA below -15°C or above 54°C. For inop ALS, increase LNAV/VNAV all Cats visibility to 1½ SM and LNAV Cat C/D visibility to 1¾ SM.		

ATIS 118.325	NORCAL APP CON 127.4 317.5	MATHER TOWER ★ 120.65 (CTAF) 282.25	GND CON 121.85 307.9	CLNC DEL 121.85 307.9	UNICOM 122.95
------------------------	--------------------------------------	---	--------------------------------	---------------------------------	-------------------------



3000	XAKBE	tr 233°	SAC	VGSI and RNAV glidepath not coincident (VGSI Angle 3.00/TCH 50).
*LNAV only	JAKAX 2.1 NM to RW22L	GADBE 1800	JASOD	STNGR 4 NM Holding Pattern
*1.4 NM to RW22L				
RW22L 800*				
1.4 NM 0.7 3.1 NM 4.1 NM 3.4 NM				
CATEGORY	A	B	C	D
LPV DA	298-½ 200 (200-½)			
LNAV/VNAV DA	517-¾ 419 (500-¾)			
LNAV MDA	580-½ 482 (500-½)		580-1 482 (500-1)	
CIRCLING	580-1 482 (500-1)		600-1½ 800-2¼ 502 (600-1½) 702 (800-2¼)	



SACRAMENTO, CALIFORNIA
Amdt 3A 30JAN20

38°33'N-121°18'W

SACRAMENTO MATHER (MHR)
RNAV (GPS) RWY 22L

SW-2, 10 JUL 2025 to 07 AUG 2025

SW-2, 10 JUL 2025 to 07 AUG 2025