

SACRAMENTO, CALIFORNIA

AL-356 (FAA)

25107

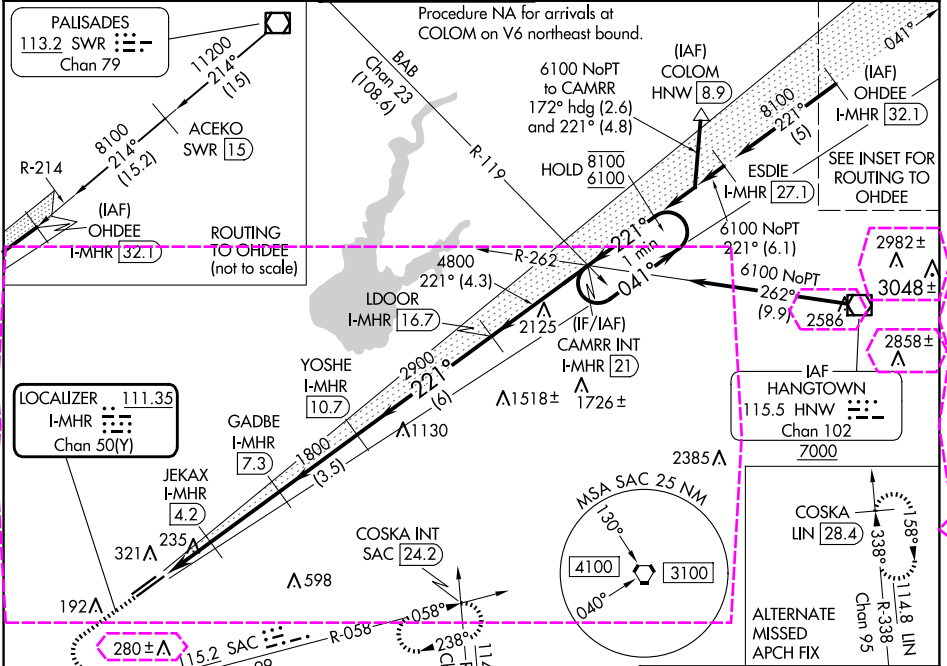
LOC/DME I-MHR 111.35 Chan 50(Y)	APP CRS 221°	Rwy Idg 11301 TDZE 98 Apt Elev 98
---	------------------------	--

ILS Z or LOC Z RWY 22L

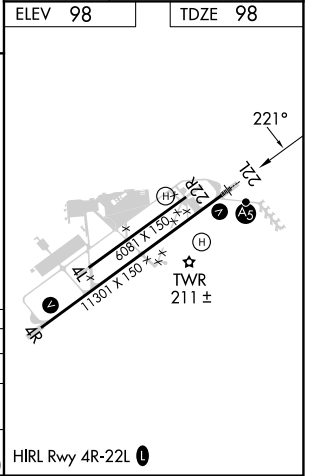
SACRAMENTO MATHER (MHR)

DME required for LOC only.	MALSR	MISSED APPROACH: Climb to 1000, then climbing left turn to 3500 on heading 090° and SAC VORTAC R-058 to COSKA INT/ SAC 24.2 DME and hold, continue climb-in-hold to 3500.
For inop ALS, increase S-ILS Cat E visibility to RVR 4000 and S-LOC Cat C/D/E visibility to RVR 6000. Circling NA northwest of Rwy 4R-22L. *RVR 1800 authorized with use of FD or AP or HUD to DA (NA when using Sacramento Exec altimeter setting).	AS	

ATIS 118.325	NORCAL APP CON 127.4 317.5	MATHER TOWER ★ 120.65 (CTAF) 0 282.25	GND CON 121.85 307.9	CLNC DEL 121.85 307.9	UNICOM 122.95
------------------------	--------------------------------------	---	--------------------------------	---------------------------------	-------------------------



1000	3500	SAC R-058	COSKA INT	VGSI and ILS glidepath not coincident (VGSI Angle 3.00/TCH 50).	One Minute Holding Pattern
hdg 090°					
JEKAX I-MHR 4.2	GADBE I-MHR 7.3	YOSHE I-MHR 10.7	LDOOR I-MHR 16.7	CAMRR INT I-MHR 21	
800	1800	2900	4800	8100	6100
221°	221°	221°	221°	221°	221°
GS 3.00°					TCH 56
1.1	1 NM	3.1 NM	3.5 NM	6 NM	4.3 NM
CATEGORY	A	B	C	D	E
S-ILS 22L*	298/24 200 (200-½)				
S-LOC 22L	500/24	402 (500-½)	500/40	402 (500-¾)	
CIRCLING	560-1	462 (500-1)	600-1½ 502 (600-1½)	800-2¼ 702 (800-2¼)	800-2½ 702 (800-2½)



SACRAMENTO, CALIFORNIA
Amdt 8 15JUN23

38°33'N-121°18'W

SACRAMENTO MATHER (MHR)

ILS Z or LOC Z RWY 22L

SACRAMENTO, CALIFORNIA

AL-356 (FAA)

25191

LOC/DME I-MHR 111.35 Chan 50(Y)	APP CRS 221°	Rwy Ldg TDZE 98 Apt Elev 98
---	------------------------	---

ILS Z or LOC Z RWY 22L

SACRAMENTO MATHER (MHR)

DME required for LOC only.

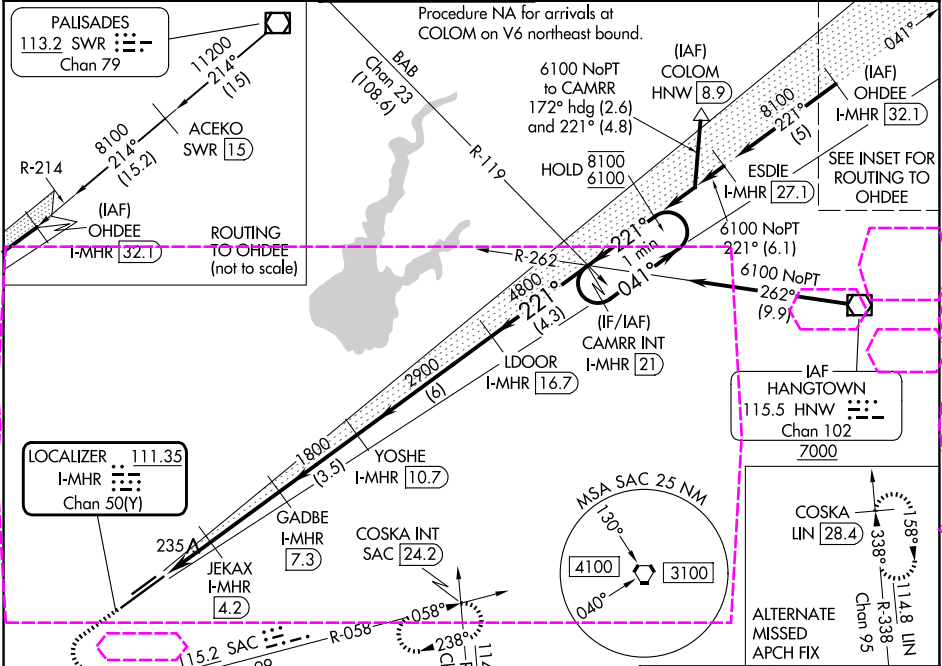
⚠ For inop ALS, increase S-ILS Cat E visibility to RVR 4000 and S-LOC Cat C/D/E visibility to RVR 6000. Circling NA northwest of Rwy 4R-22L.

*RVR 1800 authorized with use of FD or AP or HUD to DA (NA when using Sacramento Exec altimeter setting).

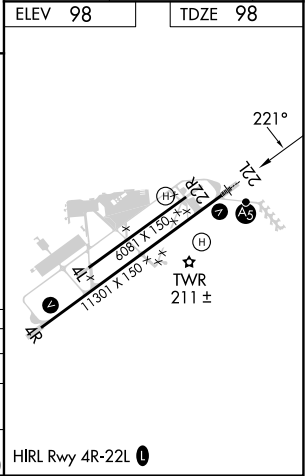
MALS R

MISSED APPROACH: Climb to 1000, then climbing left turn to 3500 on heading 090° and SAC VORTAC R-058 to COSKA INT/ SAC 24.2 DME and hold, continue climb-in-hold to 3500.

ATIS 118.325	NORCAL APP CON 127.4 317.5	MATHER TOWER ★ 120.65 (CTAF) 0 282.25	GND CON 121.85 307.9	CLNC DEL 121.85 307.9	UNICOM 122.95
------------------------	--------------------------------------	---	--------------------------------	---------------------------------	-------------------------



1000 3500	SAC R-058	COSKA INT	VGSI and ILS glidepath not coincident (VGSI Angle 3.00/TCH 50).			One Minute Holding Pattern	
hdg 090°			YOSHE I-MHR 10.7	LDOOR I-MHR 16.7	CAMRR INT I-MHR 21		
JEKAX I-MHR 4.2	GADBE I-MHR 7.3						
I-MHR 2.1							
800	1800		2900	4800	8100	6100	GS 3.00° TCH 56
1.1	1 NM	3.1 NM	3.5 NM	6 NM	4.3 NM		
CATEGORY	A	B	C	D	E		
S-ILS 22L*	298/24 200 (200-½)						
S-LOC 22L	500/24	402 (500-½)	500/40 402 (500-¾)				
CIRCLING	560-1	462 (500-1)	600-1½ 502 (600-1½)	800-2¼ 702 (800-2¼)	800-2½ 702 (800-2½)		



SW-2, 10 JUL 2025 to 07 AUG 2025

SW-2, 10 JUL 2025 to 07 AUG 2025