

SACRAMENTO, CALIFORNIA

AL-356 (FAA)

25107

LOC/DME I-MHR 111.35 Chan 50(Y)	APP CRS 221°	Rwy Idg TDZE 98 Apt Elev 98	11301
---	------------------------	---	--------------

ILS Z RWY 22L (SA CAT I & II)

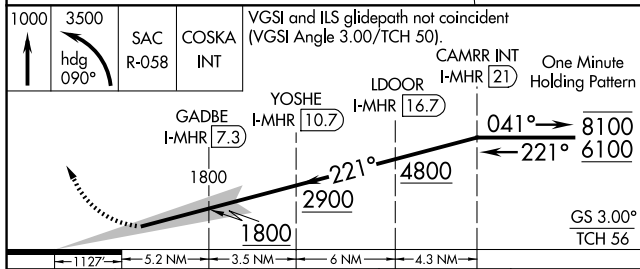
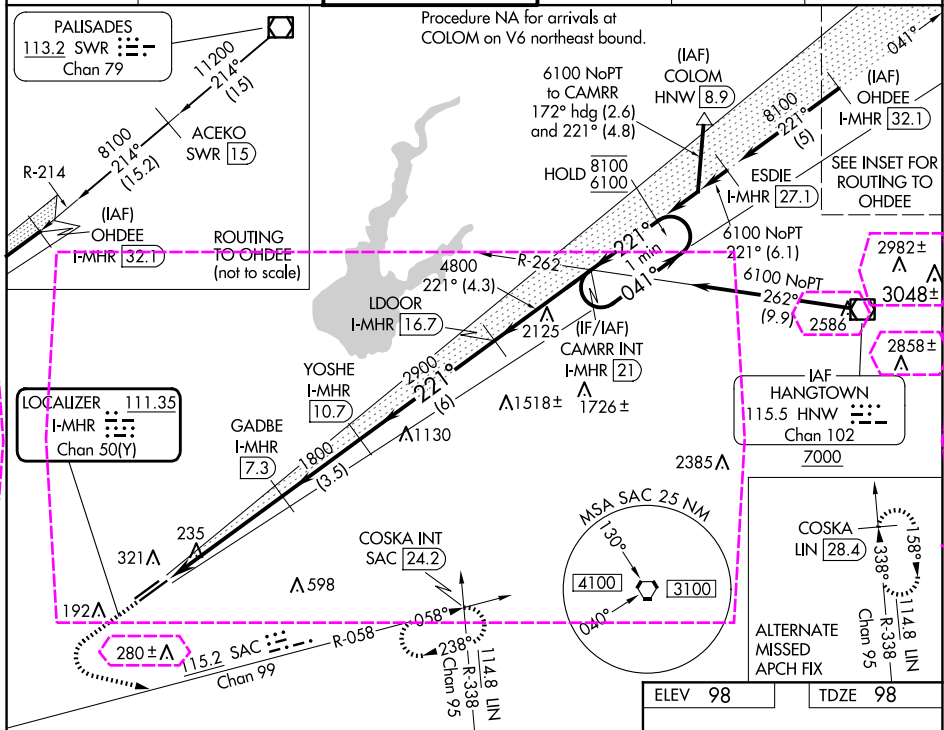
SACRAMENTO MATHER (MHR)

⚠ Requires specific OPSPEC, MSPEC, or LOA approval.
Procedure NA when tower closed.

MALSR

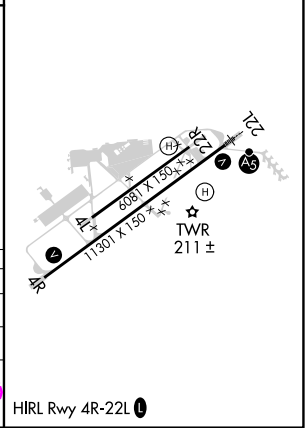
MISSED APPROACH: Climb to 1000, then climbing left turn to 3500 on heading 090° and SAC VORTAC R-058 to COSKA INT/SAC 24.2 DME and hold, continue climb-in-hold to 3500.

ATIS 118.325	NORCAL APP CON 127.4 317.5	MATHER TOWER ★ 120.65 (CTAF) 282.25	GND CON 121.85 307.9	CLNC DEL 121.85 307.9	UNICOM 122.95
------------------------	--------------------------------------	---	--------------------------------	---------------------------------	-------------------------



CATEGORY	A	B	C	D
S-ILS 22L	SA CAT I	RA 136/14	150	DA 248
S-ILS 22L	SA CAT II	RA 95/12	100	DA 198

SA CATEGORY I & II ILS - SPECIAL AIRCREW & AIRCRAFT CERTIFICATION REQUIRED



SACRAMENTO, CALIFORNIA

Amtd 8 15JUN23

38°33'N-121°18'W

SACRAMENTO MATHER (MHR)

ILS Z RWY 22L (SA CAT I & II)

ILS Z RWY 22L (SA CAT I & II)
SACRAMENTO MATHER (MHR)

MALSR

MISSED APPROACH: Climb to 1000, then climbing left turn to 3500 on heading 090° and SAC VORTAC R-058 to COSKA INT/SAC 24.2 DME and hold, continue climb-in-hold to 3500.

1000 ↑	3500 hdg 090°	SAC R-058	COSKA INT	VGSI and ILS glidepath not coincident (VGSI Angle 3.00/TCH 50).			
				YOSHE I-MHR [10.7]	LDOOR I-MHR [16.7]	CAMR INT I-MHR [21]	One Minute Holding Pattern
CATEGORY	A		B		C		D
S-ILS 22L	SA CAT I		RA 136/14 150		DA 248		
S-ILS 22L	SA CAT II		RA 95/12 100		DA 198		

SA CATEGORY I & II ILS - SPECIAL AIRCREW
& AIRCRAFT CERTIFICATION REQUIRED

