

25107

LOC/DME I-MHR <u>111.35</u> Chan 50 (Y)	APP CRS 221°	Rwy Idg 11301 TDZE 98 Apt Elev 98
---	------------------------	--

ILS Y or LOC Y RWY 22L
SACRAMENTO MATHER (MHR)

TACAN required for procedure entry at BAB TACAN. For non-TACAN equipped aircraft, DME required.

T Circling NA northwest of Rwy 4R-22L. For inop ALS, increase S-ILS Cat E visibility to RVR 4000 and S-LOC Cat C/D/E visibility to RVR 6000.
A *RVR 1800 authorized with use of FD or AP or HUD to DA. (NA when using Sacramento Exec altimeter setting).

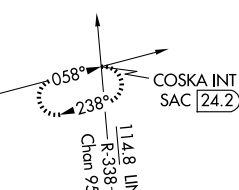
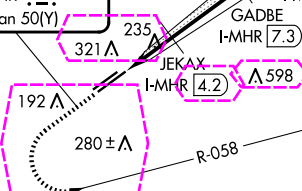
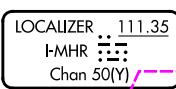
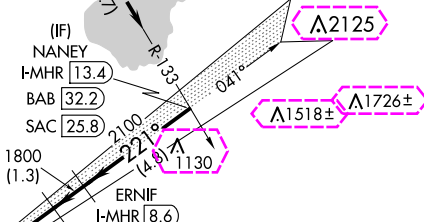
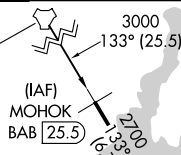
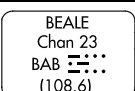
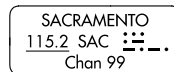
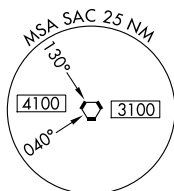
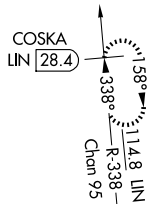
MALSR



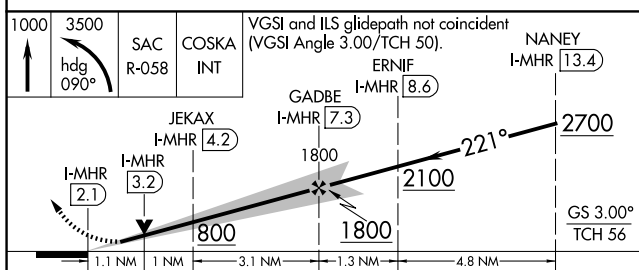
MISSED APPROACH: Climb to 1000, then climbing left turn to 3500 on heading 090° and SAC VORTAC R-058 to COSKA INT/ SAC 24.2 DME and hold, continue climb-in-hold to 3500.

ATIS 118.325	NORCAL APP CON 127.4 317.5	MATHER TOWER ★ 120.65 (CTAF) 0 282.25	GND CON 121.85 307.9	CLNC DEL 121.85 307.9	UNICOM 122.95
-----------------	-------------------------------	--	-------------------------	--------------------------	------------------

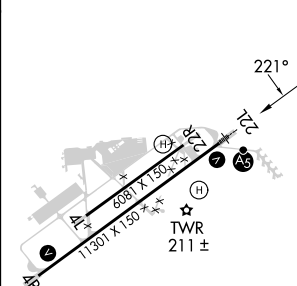
ALTERNATE MISSED APCH FIX



ELEV 98		TDZE 98
---------	--	---------



CATEGORY	A	B	C	D	E
S-ILS 22L	298/24 200 (200-½)				
S-LOC 22L	500/24 402 (500-½)		500/40 402 (500-¾)		
C CIRCUNG	560-1	462 (500-1)	600-1½ 502 (600-1½)	800-2¼ 702 (800-2¼)	800-2½ 702 (800-2½)



SACRAMENTO, CALIFORNIA
Orig 15JUN23

38°33'N-121°18'W

SACRAMENTO MATHER (MHR)

ILS Y or LOC Y RWY 22L

SW-2, 12 JUN 2025 to 10 JUL 2025

SW-2, 12 JUN 2025 to 10 JUL 2025

SACRAMENTO, CALIFORNIA

AL-356 (FAA)

25191

LOC/DME I-MHR 111.35 Chan 50(Y)	APP CRS 221°	Rwy Ldg 11301 TDZE 98 Apt Elev 98
---	------------------------	--

ILS Y or LOC Y RWY 22L

SACRAMENTO MATHER (MHR)

TACAN required for procedure entry at BAB TACAN. For non-TACAN equipped aircraft, DME required.

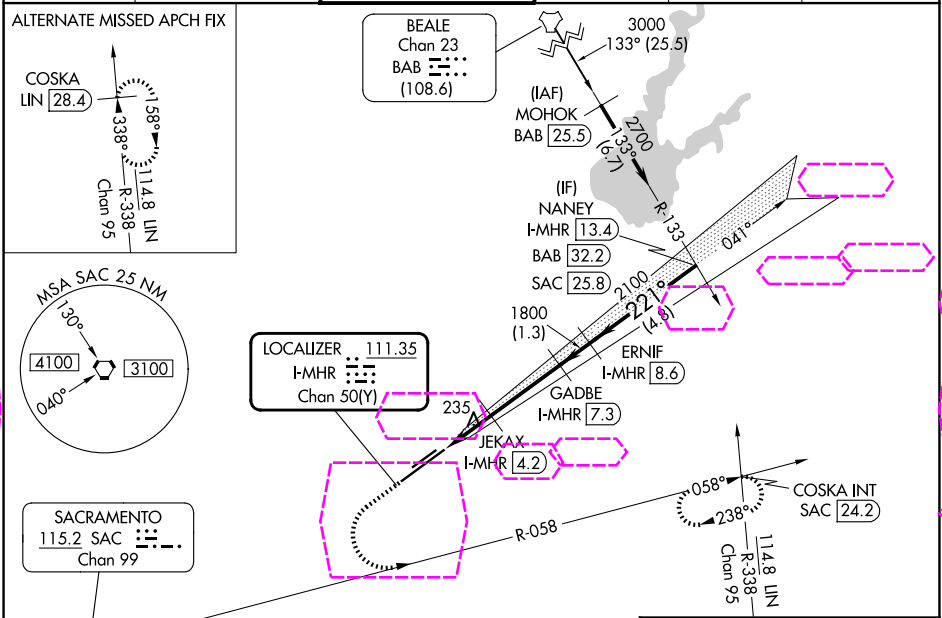
⚠ Circling NA northwest of Rwy 4R-22L. For inop ALS, increase S-ILS Cat E visibility to RVR 4000 and S-LOC Cat C/D/E visibility to RVR 6000.

⚠ *RVR 1800 authorized with use of FD or AP or HUD to DA. (NA when using Sacramento Exec altimeter setting).

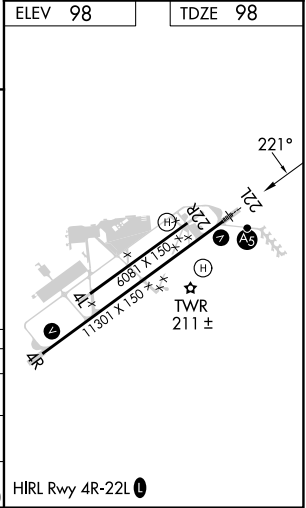
MALSR

MISSED APPROACH: Climb to 1000, then climbing left turn to 3500 on heading 090° and SAC VORTAC R-058 to COSKA INT/ SAC 24.2 DME and hold, continue climb-in-hold to 3500.

ATIS 118.325	NORCAL APP CON 127.4 317.5	MATHER TOWER ★ 120.65 (CTAF) 0 282.25	GND CON 121.85 307.9	CLNC DEL 121.85 307.9	UNICOM 122.95
------------------------	--------------------------------------	---	--------------------------------	---------------------------------	-------------------------



1000	3500	SAC R-058	COSKA INT	VGSI and ILS glidepath not coincident (VGSI Angle 3.00/TCH 50).			NANEY I-MHR (13.4)
↑	hdg 090°						
		JEKAX I-MHR (4.2)	GADBE I-MHR (7.3)	ERNIF I-MHR (8.6)			
		I-MHR (2.1)	I-MHR (3.2)				
		800	1800	2100	2700		
		1.1 NM	1 NM	3.1 NM	1.3 NM	4.8 NM	
CATEGORY	A	B	C	D	E		
S-ILS 22L	298/24 200 (200-½)						
S-LOC 22L	500/24	402 (500-½)	500/40 402 (500-¾)				
CIRCLING	560-1	462 (500-1)	600-1½ 502 (600-1½)	800-2¼ 702 (800-2¼)	800-2½ 702 (800-2½)		



SACRAMENTO, CALIFORNIA
Orig 15JUN23

38°33'N-121°18'W

SACRAMENTO MATHER (MHR)
ILS Y or LOC Y RWY 22L

SW-2, 10 JUL 2025 to 07 AUG 2025

SW-2, 10 JUL 2025 to 07 AUG 2025