

PITTSBURGH, PENNSYLVANIA

AL-326 (FAA)

25107

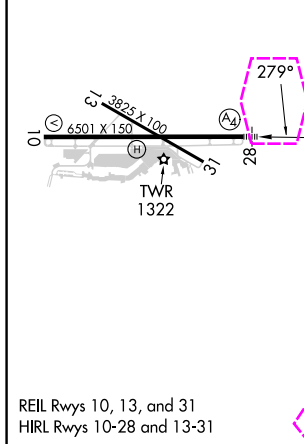
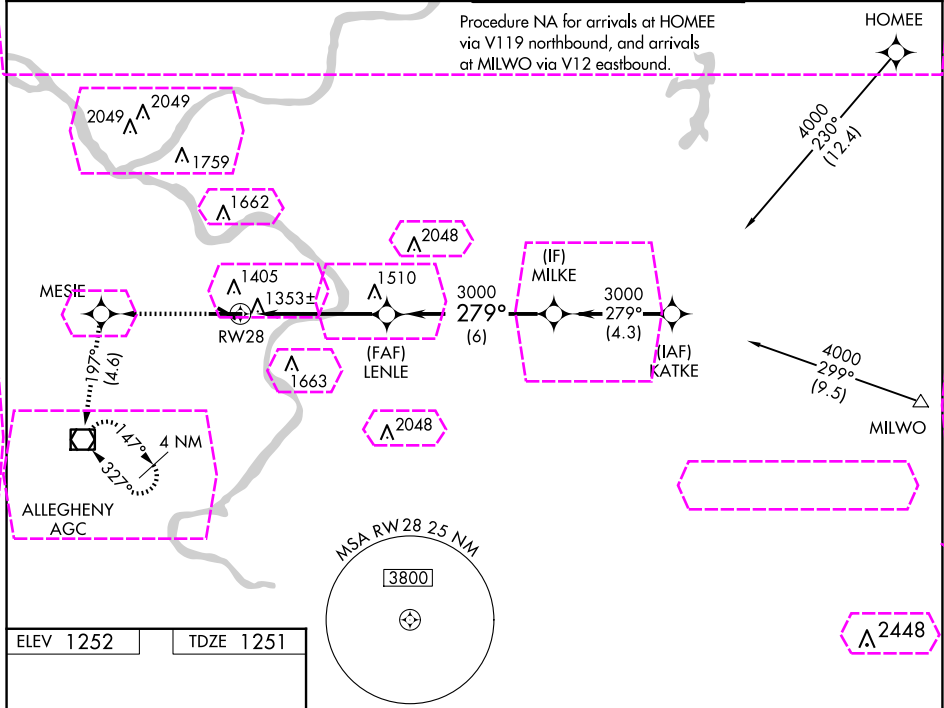
WAAS CH 65625 W28A	APP CRS 279°	Rwy Idg TDZE 1251 Apt Elev 1252	6501
--	------------------------	---	-------------

RNAV (GPS) RWY 28

ALLEGHENY COUNTY (AGC)

RNP APCH - GPS. ▼ For uncompensated Baro-VNAV systems, LNAV/VNAV NA below -16°C or above 54°C. Circling Rwy 13 NA at night. For inop ALS, increase LPV all Cats visibility to RVR 4500 and LNAV/VNAV all Cats visibility to RVR 5500. ▲	MALS ④	MISSED APPROACH: Climb to 3000 direct MESIE and on course 197° to AGC VOR/DME and hold, continue climb-in-hold to 3000.
---	-----------	---

ATIS 120.55	PITTSBURGH APP CON 119.35 285.575	ALLEGHENY TOWER 121.1 239.0	GND CON 121.7
-----------------------	---	---------------------------------------	-------------------------



3000	MESIE	crs 197°	AGC	LENLE	MILKE	Procedure Turn NA
1.2 NM to RWY 28						
3000						
3000						
GP 3000 TCH 51						
1.2 NM	4 NM	6 NM				
CATEGORY A	B	C	D			
LPV DA	1563/24	312 (400-½)				
LNAV/VNAV DA	1625/35	374 (400-¾)				
LNAV MDA	1700/24	449 (500-½)	1700/45	449 (500-¾)		
CIRCLING	1720-1¼	468 (500-1¼)	1980-2	1980-2¼		
			728 (800-2)	728 (800-2¼)		

PITTSBURGH, PENNSYLVANIA
Amdt 3B 03NOV22

40°21'N-79°56'W

ALLEGHENY COUNTY (AGC)

RNAV (GPS) RWY 28

PITTSBURGH, PENNSYLVANIA

AL-326 (FAA)

25191

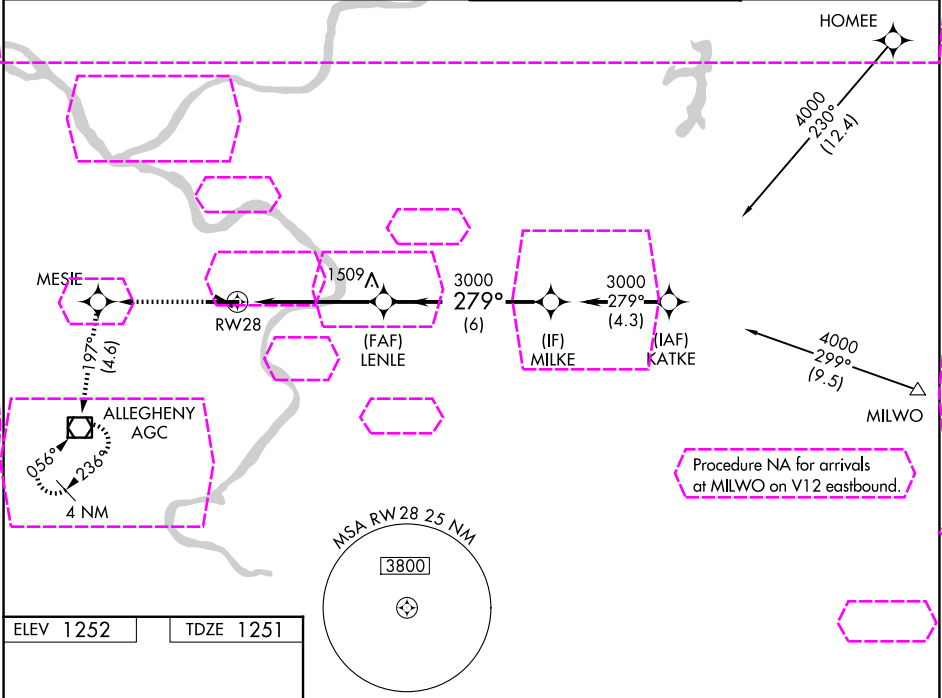
WAAS CH 65625 W28A	APP CRS 279°	Rwy Ldg TDZE 1251 Apt Elev 1252
--	------------------------	---

RNAV (GPS) RWY 28

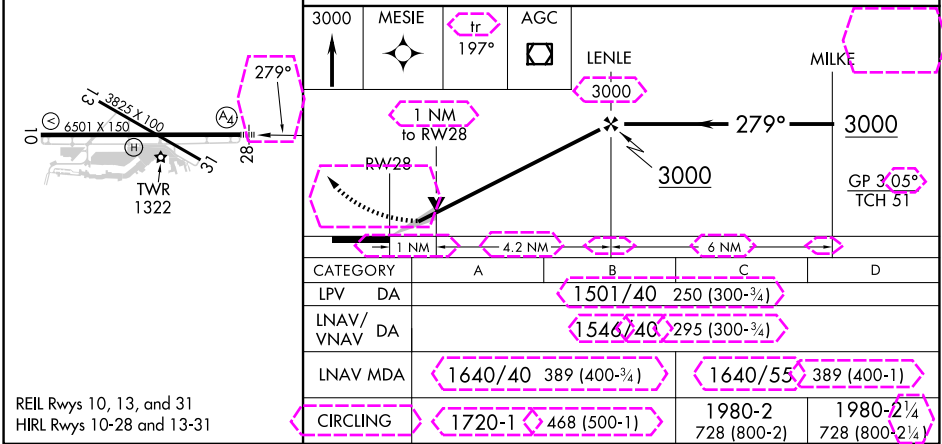
ALLEGHENY COUNTY (AGC)

RNP APCH - GPS.	MALS	MISSED APPROACH: Climb to 3000 direct MESIE and on 197° track to AGC VOR/DME and hold, continue climb-in-hold to 3000.
For uncompensated Baro-VNAV systems, LNAV/VNAV NA below -16°C or above 54°C. Autopilot coupled approach NA below 1900. Inop table does not apply to LPV, for inop ALS increase LNAV/VNAV all Cats to RVR 4500. Circling Rwy 13 NA at night.		

ATIS 120.55	PITTSBURGH APP CON 119.35 285.575	ALLEGHENY TOWER 121.1 239.0	GND CON 121.7
-----------------------	---	---------------------------------------	-------------------------



ELEV 1252	TDZE 1251
------------------	------------------



PITTSBURGH, PENNSYLVANIA
Amdt **3C 10JUL25**

40°21'N-79°56'W

ALLEGHENY COUNTY (AGC)

RNAV (GPS) RWY 28