

PITTSBURGH, PENNSYLVANIA

AL-326 (FAA)

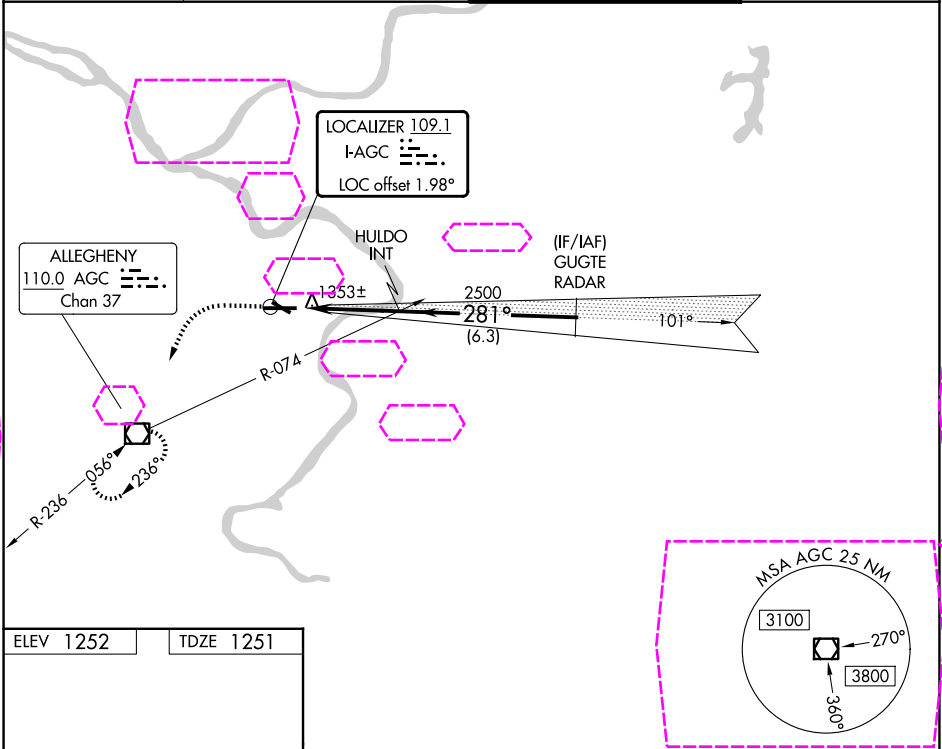
25191

LOC I-AGC 109.1	APP CRS 281°	Rwy Ldg TDZE 1251 Apt Elev 1252
---------------------------	------------------------	---

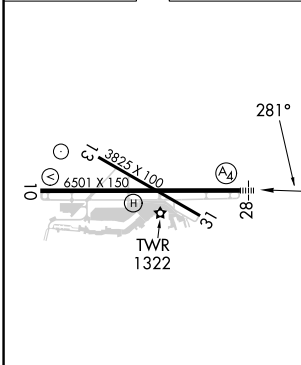
ILS or LOC RWY 28
ALLEGHENY COUNTY (AGC)

RADAR required.		MALS	MISSED APPROACH: Climb to 2000 then climbing left turn to 3000 direct AGC VOR/DME and hold, continue climb-in-hold to 3000.
Autopilot coupled approach NA below 1900. Circling Rwy 13 NA at night. For inop ALS, increase S-LOC Cats C and D visibility to RVR 6000. Inop table does not apply to S-ILS 28.		(A4)	

ATIS 120.55	PITTSBURGH APP CON 119.35 285.575	ALLEGHENY TOWER 121.1 239.0	GND CON 121.7
-----------------------	---	---------------------------------------	-------------------------



ELEV 1252	TDZE 1251
-----------	-----------



REIL Rwy 10, 13, and 31 HIRL Rwy 10-28 and 13-31					
FAF to MAP 3.8 NM					
Knots	60	90	120	150	180
Min:Sec	3:48	2:32	1:54	1:31	1:16

281°				2000	3000	AGC
				↑	↩	☐
				HULDO INT		
				2500		
				281°		
				3000		
				GS 3.00°		
				TCH 51		
				3.8 NM		
				6.3 NM		
				GUGTE RADAR		
				CATEGORY		
				S-ILS 28		
				S-LOC 28		
				CIRCLING		

PITTSBURGH, PENNSYLVANIA

Amdt 29E 17APR25

40°21'N-79°56'W

ALLEGHENY COUNTY (AGC)

ILS or LOC RWY 28