

PITTSBURGH, PENNSYLVANIA

AL-326 (FAA)

25107

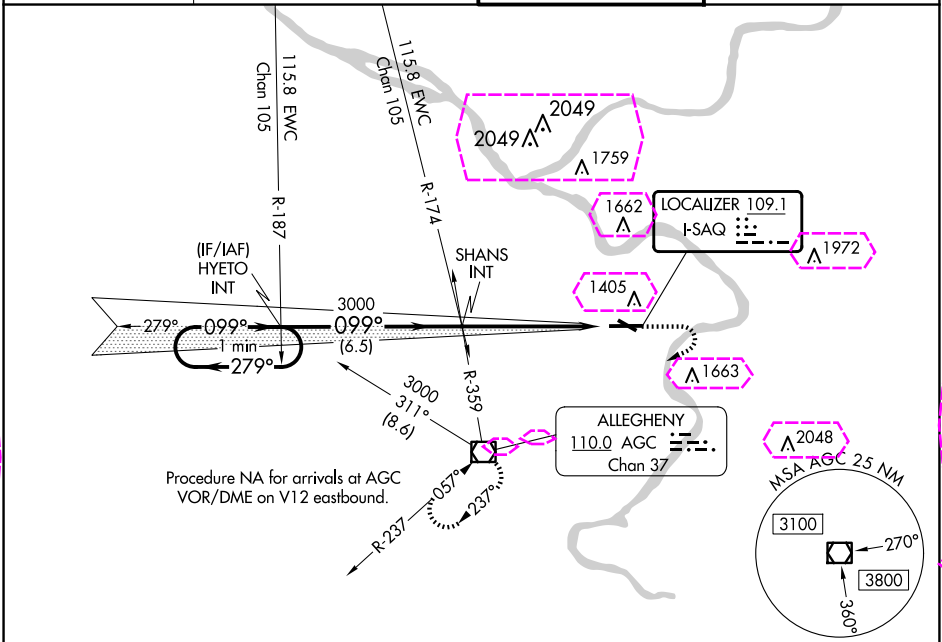
LOC I-SAQ 109.1	APP CRS 099°	Rwy Idg TDZE Apt Elev	6501 1251 1252
---------------------------	------------------------	-----------------------------	---

ILS or LOC RWY 10
ALLEGHENY COUNTY (AGC)

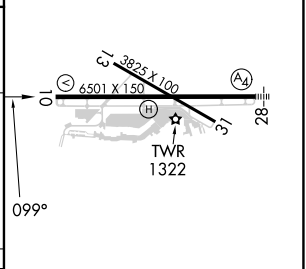
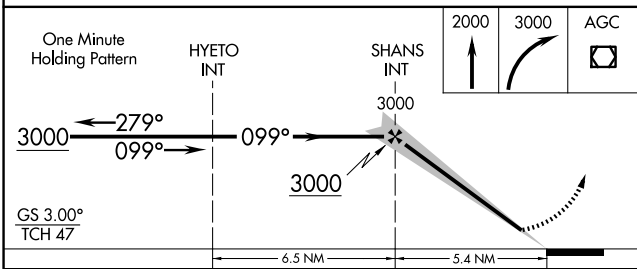
Circling Rwy 13 NA at night.

MISSED APPROACH: Climb to 2000 then climbing right turn to 3000 direct AGC VOR/DME and hold, continue climb-in-hold to 3000.

ATIS 120.55	PITTSBURGH APP CON 119,35 285,575	ALLEGHENY TOWER 121.1 239.0	GND CON 121.7
-----------------------	---	---------------------------------------	-------------------------



ELEV 1252	TDZE 1251
-----------	-----------



CATEGORY	A	B	C	D
S-ILS 10	1451-3/4 200 (200-3/4)			
S-LOC 10	1760-1 509 (600-1)		1760-1 3/8 509 (600-1 3/8)	
CIRCLING	1760-1 508 (600-1)		1980-2 728 (800-2)	1980-2 1/4 728 (800-2 1/4)

REIL Rwy 10, 13, and 31
HIRL Rwy 10-28 and 13-31
FAF to MAP 5.4 NM

Knots	60	90	120	150	180
Min:Sec	5:24	3:36	2:42	2:10	1:48

PITTSBURGH, PENNSYLVANIA
Amdt 7A 03NOV22

40°21'N-79°56'W

ALLEGHENY COUNTY (AGC)
ILS or LOC RWY 10


PITTSBURGH, PENNSYLVANIA

AL-326 (FAA)

25191

LOC I-SAQ 109.1	APP CRS 099°	Rwy Ldg TDZE Apt Elev	6501 1251 1252
---------------------------	------------------------	-----------------------------	---

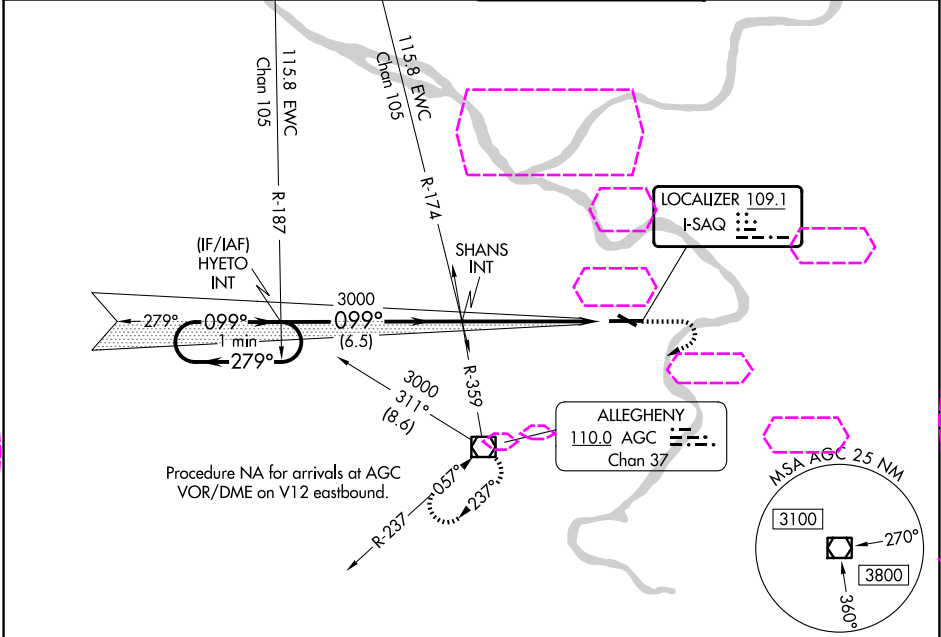
ILS or LOC RWY 10
ALLEGHENY COUNTY (AGC)



Circling Rwy 13 NA at night.

MISSED APPROACH: Climb to 2000 then climbing right turn to 3000 direct AGC VOR/DME and hold, continue climb-in-hold to 3000.

ATIS 120.55	PITTSBURGH APP CON 119,35 285,575	ALLEGHENY TOWER 121.1 239.0	GND CON 121.7
-----------------------	---	---------------------------------------	-------------------------



ELEV 1252

TDZE 1251

One Minute Holding Pattern

HYETO INT

SHANS INT

3000

2000

3000

AGC

3000

279°

099°

GS 3.00°

TCH 47

6.5 NM

5.4 NM

REIL Rwy 10, 13, and 31

HIRL Rwy 10-28 and 13-31

FAF to MAP 5.4 NM

Knots	60	90	120	150	180
Min:Sec	5:24	3:36	2:42	2:10	1:48

CATEGORY	A	B	C	D
S-ILS 10	1451-3/4 200 (200-3/4)			
S-LOC 10	1760-1 509 (600-1)		1760-13/8 509 (600-13/8)	
CIRCLING	1760-1 508 (600-1)		1980-2 1980-21/4 728 (800-2) 728 (800-21/4)	

PITTSBURGH, PENNSYLVANIA
Amdt 7A 03NOV22

40°21'N-79°56'W

ALLEGHENY COUNTY (AGC)
ILS or LOC RWY 10

NE-4, 10 JUL 2025 to 07 AUG 2025

NE-4, 10 JUL 2025 to 07 AUG 2025