

APP CRS 170°	Rwy Idg 10000
	TDZE 485
	Apt Elev 501

RNAV (RNP) Z RWY 17R
LOUISVILLE MUHAMMAD ALI INTL (SDF)

RNP AR APCH - GPS	
-------------------	--

T For uncompensated Baro-VNAV systems, procedure NA below -13°C or above 54°C. Simultaneous approach authorized.
For inop ALS, increase RNP 0.30 visibility all Cats to 1 $\frac{3}{8}$ SM.



MISSED APPROACH: Climb to 1600 then climbing right turn to 4000 direct DAMEN and hold.

D-ATIS
118.725

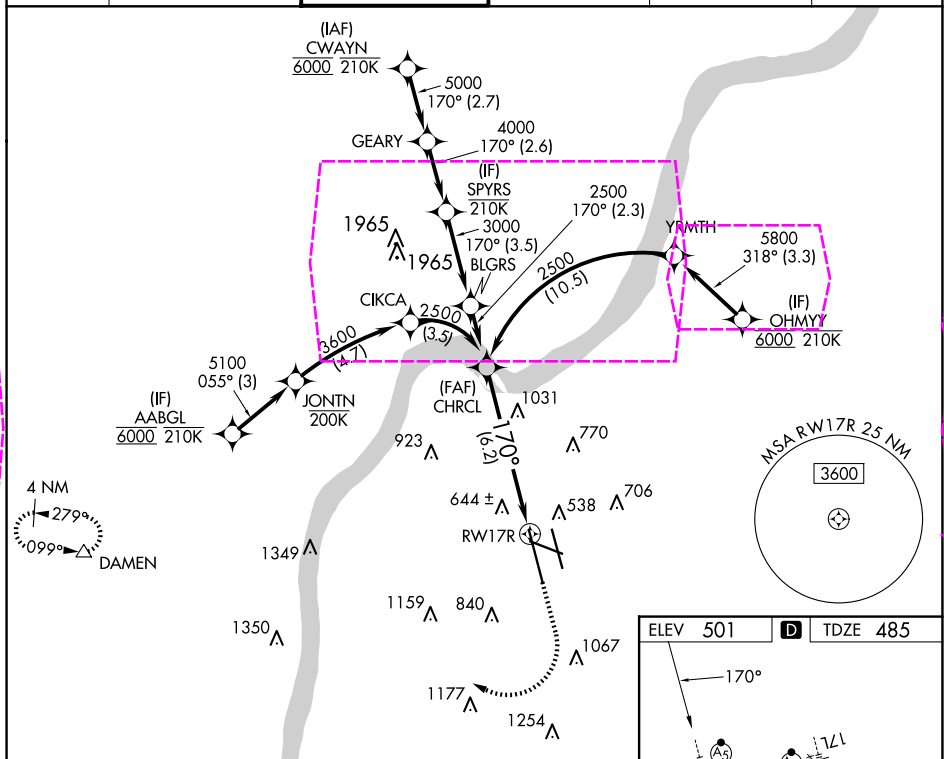
LOUISVILLE APP CON
132.075 327.0

LOUISVILLE TOWER
124.2 257.8

GND CON
121.7 348.6

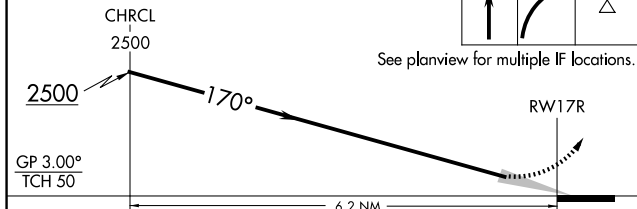
CLNC DEL
126.1 275.8

CPD/C



SE-1, 12 JUN 2025 to 10 JUL 2025

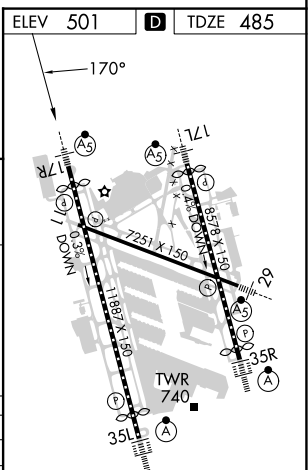
VGS1 and RNAV glidepath not coincident (VGS1 Angle 3.00/TCH 64).	1600	4000	DAMEN
---	------	------	-------



See planview for multiple IF locations.

CATEGORY	A	B	C	D
RNP 0.30 DA	974/50 489 (500-1)			

AUTHORIZATION REQUIRED



HIRL all Rwy's
TDZ/CL Rwy's 17L, 17R, 35L and 35R

LOUISVILLE, KENTUCKY
Amdt 1 11JUL24

LOUISVILLE MUHAMMAD ALI INTL (SDF)
38°10'N-85°44'W RNAV (RNP) Z RWY 17R

LOUISVILLE, KENTUCKY

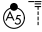
AL-239 (FAA)

25191

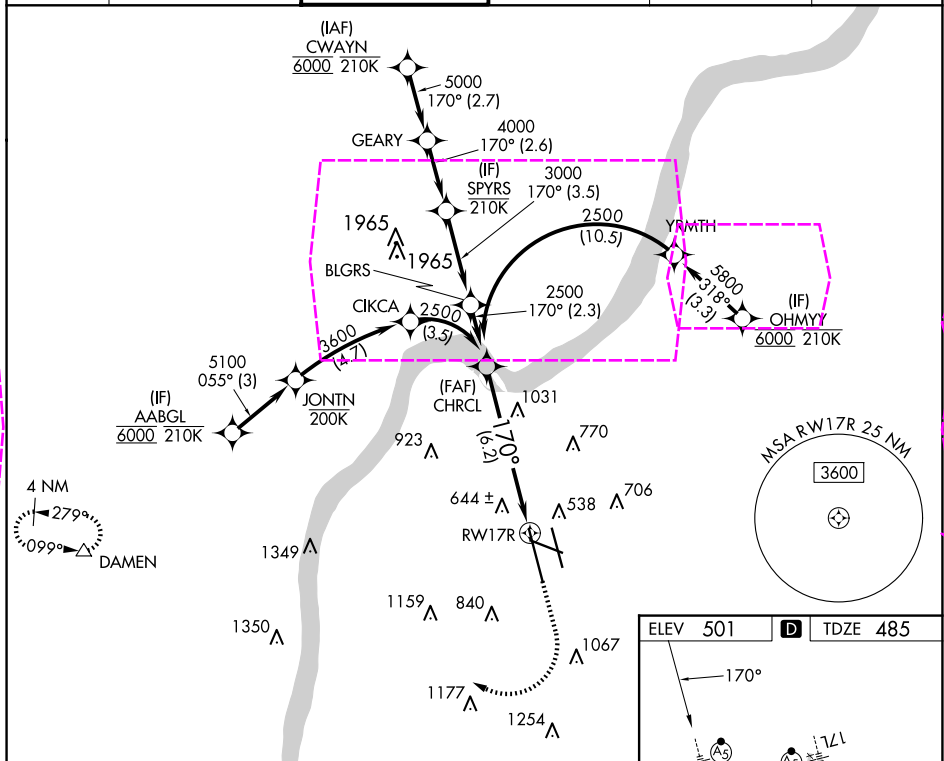
APP CRS	Rwy Ldg	10000
170°	TDZE	485
	Apt Elev	501




RNAV (RNP) Z RWY 17R

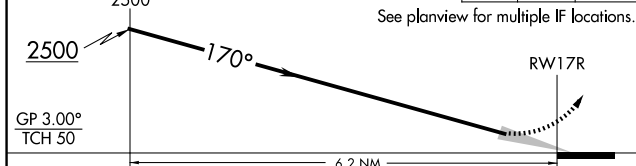
LOUISVILLE MUHAMMAD ALI INTL (SDF)

RNP AR APCH - GPS.	MALSR 	MISSED APPROACH: Climb to 1600 then climbing right turn to 4000 direct DAMEN and hold.
▼ For uncompensated Baro-VNAV systems, procedure NA below -13°C or above 54°C. Simultaneous approach authorized. For inop ALS, increase RNP 0.30 visibility all Cats to 1½ SM.		

D-ATIS 118.725	LOUISVILLE APP CON 132.075 327.0	LOUISVILLE TOWER 124.2 257.8	GND CON 121.7 348.6	CLNC DEL 126.1 275.8	CPDLC
-------------------	-------------------------------------	---------------------------------	------------------------	-------------------------	-------



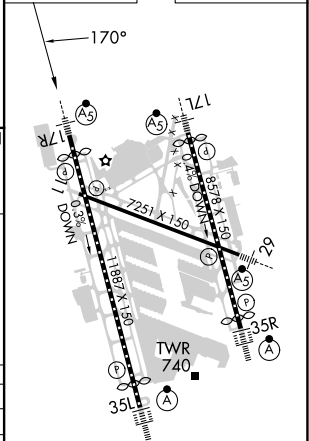
VGSI and RNAV glidepath not coincident (VGSI Angle 3.00/TCH 64).	1600	4000	DAMEN
			



CATEGORY	A	B	C	D
RNP 0.30 DA		974/50	489 (500-1)	

AUTHORIZATION REQUIRED

ELEV 501	D	TDZE 485
----------	---	----------



HIRL all Rwys
TDZ/CL Rwys 17L, 17R, 35L and 35R

LOUISVILLE, KENTUCKY
Amdt 1 11JUL24

LOUISVILLE MUHAMMAD ALI INTL (SDF)
38°10'N-85°44'W
RNAV (RNP) Z RWY 17R

SE-1, 10 JUL 2025 to 07 AUG 2025

SE-1, 10 JUL 2025 to 07 AUG 2025