

ILS or LOC RWY 18R

SC-3, 12 JUN 2025 to 10 JUL 2025

LAREDO, TEXAS

AL-226 (FAA)

25191

LOC/DME I-LRD	APP CRS	Rwy Ldg	18R	18L
111.9	178°	TDZE	8743	8236
Chan 56		Apt Elev	504	499
			508	508

ILS or LOC RWY 18R
LAREDO INTL (LRD)

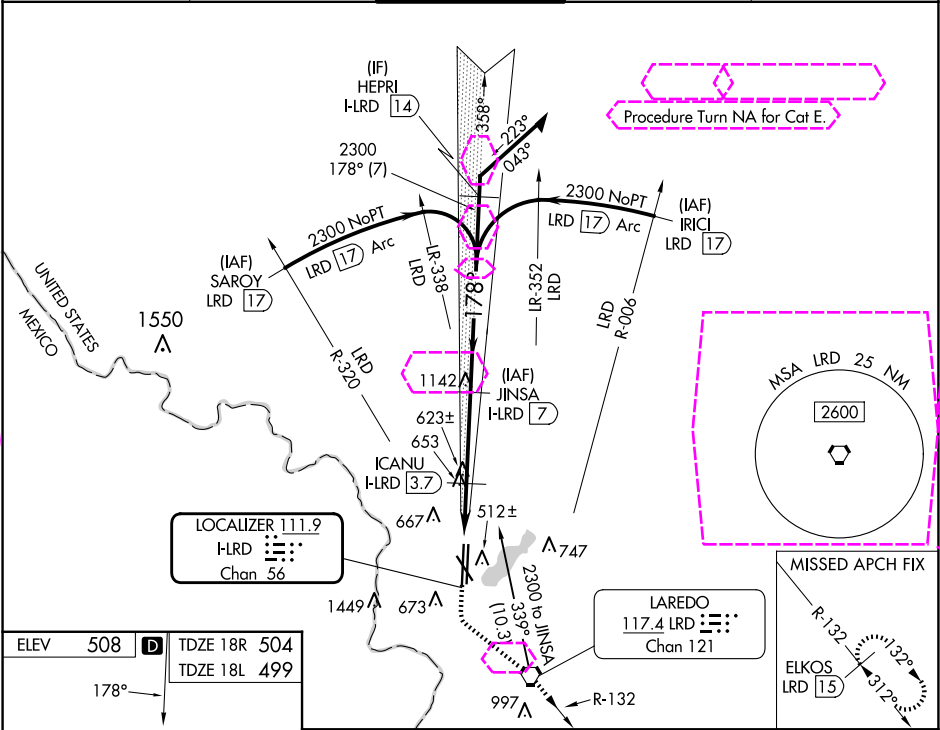
DME required.

⚠ Circling NA southwest of Rwy 14 and west of Rwy 36L.
For inop ALS, increase S-ILS 18R Cat E visibility to ¾ SM
and increase S-LOC 18R Cat C, D, and E visibility to 1½ SM.

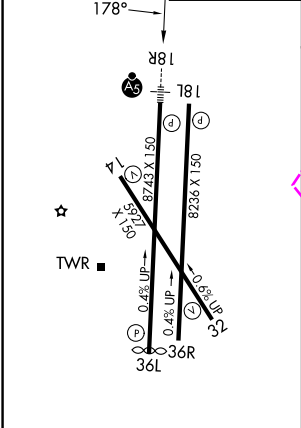


MISSED APPROACH: Climb to 1100
then climbing left turn to 2500 direct LRD
VORTAC and on LRD VORTAC R-132 to
ELKOS/LRD 15 DME and hold.

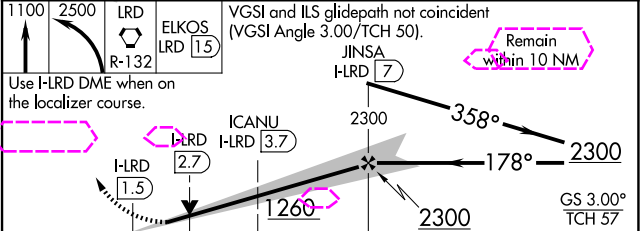
ATIS 125.775	HOUSTON CENTER 127.8 307.2	LAREDO TOWER ★ 120.1(CTAF) 0 257.9	GND CON 121.8	UNICOM 122.95
-----------------	-------------------------------	---------------------------------------	------------------	------------------



ELEV 508	TDZE 18R 504
	TDZE 18L 499



MIRS Rwy 14-32
HIRL Rwy 18R-36L and 18L-36R



CATEGORY	A	B	C	D	E
S-ILS 18R	704-½ 200 (200-½)				
S-LOC 18R	920-½	416 (500-½)	920-¾	416 (500-¾)	
SIDESTEP 18L	920-1	421 (500-1)	920-1½	920-2	421 (500-2)
CIRCLING	940-1	980-1	1100-1½	1200-2¼	1200-2½
	432 (500-1)	472 (500-1)	592 (600-1½)	692 (700-2¼)	692 (700-2½)

LAREDO, TEXAS

Amdt 12A 10JUL25

27°33'N-99°28'W

LAREDO INTL (LRD)
ILS or LOC RWY 18R