

EPHRATA, WASHINGTON

AL-138 (FAA)

25163

VORTAC EPH	APP CRS	Rwy Ldg	5500
112.6	202°	TDZE	1276
Chan 73		Apt Elev	1276

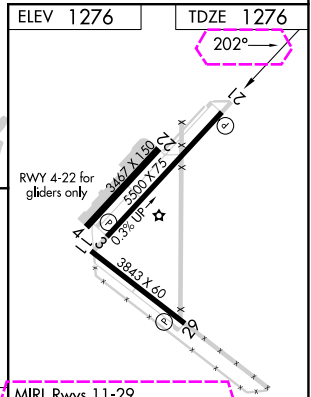
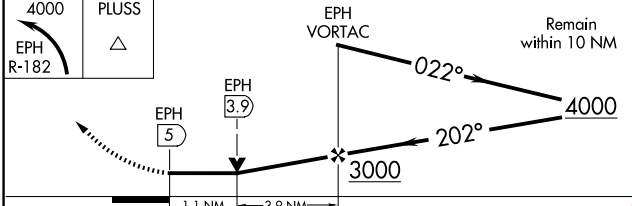
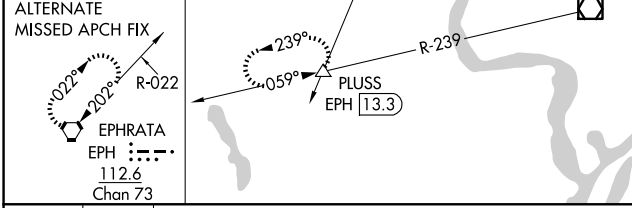
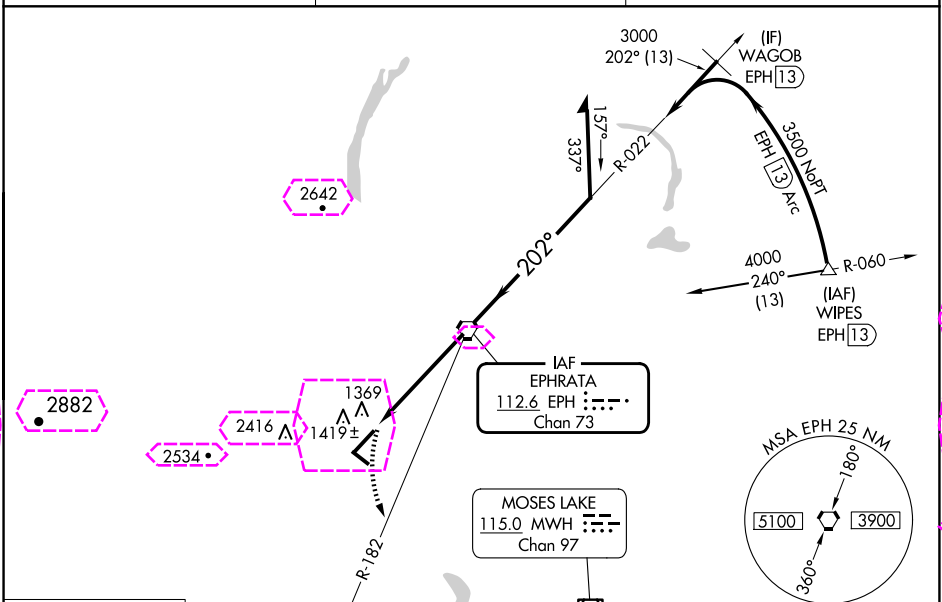
# VOR RWY 21

EPHRATA MUNI (EPH)

When local altimeter setting not received, use Moses Lake/Grant County Intl altimeter setting and increase all MDA 40 feet, increase S-21 Cat D visibility ¼ mile. VDP NA when using Moses Lake/Grant County Intl altimeter setting. Final approach from EPH VORTAC holding pattern not authorized. Procedure turn required. Circling NA for Cats B, C and D northwest of Rwy 03-21.

MISSED APPROACH: Climbing left turn to 4000 via EPH R-182 to PLUS R-133 13.3 DME and hold. Continue climb-in-hold to 4000.

ASOS 135.775	GRANT COUNTY APP CON* 126.4 379.95	UNICOM 122.8 (CTAF) 1
-----------------	---------------------------------------	--------------------------



CATEGORY	A	B	C	D
S-21	1680-1	404 (500-1)	1680-1¼	404 (500-1¼)
CIRCLING	1740-1 464 (500-1)	1740-1 464 (500-1)	1780-1½ 504 (600-1½)	2500-3 1224 (1300-3)

FAF to MAP 5 NM

Knots	60	90	120	150	180
Min:Sec	5:00	3:20	2:30	2:00	1:40

EPHRATA, WASHINGTON  
Amdt 19A 27JAN22

47°18'N-119°31'W

EPHRATA MUNI (EPH)  
VOR RWY 21

NW-1, 12 JUN 2025 to 10 JUL 2025

NW-1, 12 JUN 2025 to 10 JUL 2025

VORTAC EPH <u>112.6</u> Chan 73	APP CRS <b>202°</b>	Rwy Ldg <b>5500</b> TDZE <b>1276</b> Apt Elev <b>1276</b>
---------------------------------------	------------------------	---

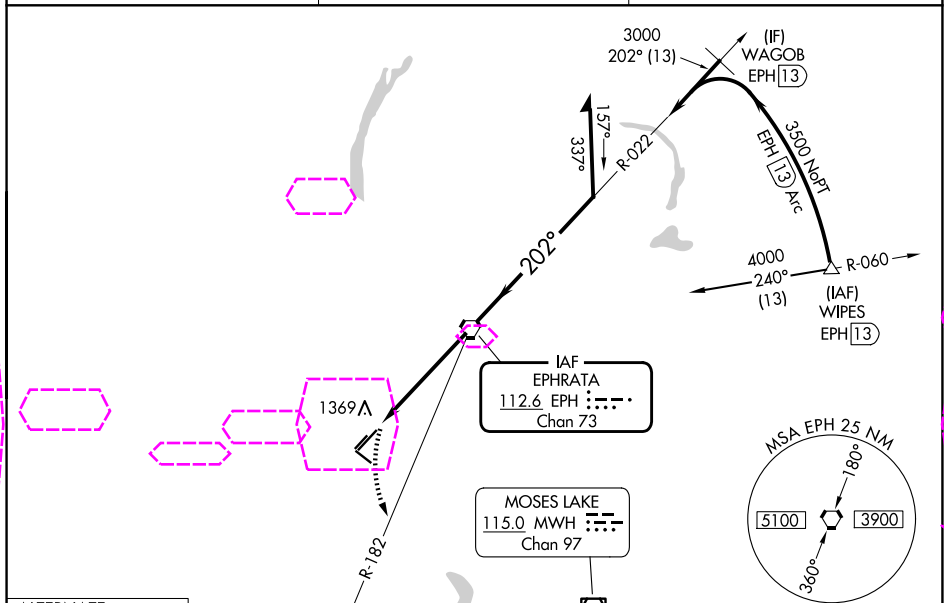
VOR RWY 21  
EPHRATA MUNI (EPH)

**T** When local altimeter setting not received, use Moses Lake/Grant County Intl altimeter setting and increase all MDA 40 feet, increase S-21 Cat D visibility ¼ mile. VDP NA when using Moses Lake/Grant County Intl altimeter setting.

**A** Final approach from EPH VORTAC holding pattern not authorized. Procedure turn required. Circling NA for Cats B, C and D northwest of Rwy 03-21.

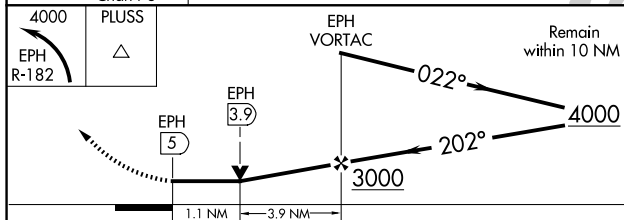
**MISSED APPROACH:** Climbing left turn to 4000 via EPH R-182 to PLUSS INT/EPH 13.3 DME and hold. Continue climb-in-hold to 4000.

ASOS 135.775	GRANT COUNTY APP CON★ 126.4 379.95	UNICOM 122.8 (CTAF) 0
-----------------	---------------------------------------	--------------------------

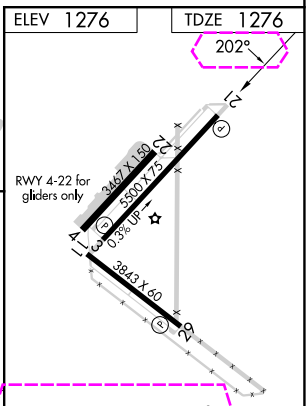


**ALTERNATE  
MISSED APCH FIX**

EPHRATA  
EPH :--:  
112.6  
Chan 73



CATEGORY	A	B	C	D
S-21	1680-1	404 (500-1)	1680-1¼	404 (500-1¼)
CIRCLING	1740-1 464 (500-1)	1740-1 464 (500-1)	1780-1½ 504 (600-1½)	2500-3 1224 (1300-3)



MIRL Rwy 11-29 and 3-21  
REIL Rwy 3, 11, 21 and 29

FAF to MAP 5 NM					
Knots	60	90	120	150	180
Min:Sec	5:00	3:20	2:30	2:00	1:40