

EPHRATA, WASHINGTON

AL-138 (FAA)

25191

WAAS CH 50208 W03A	APP CRS 027°	Rwy Ldg 5500 TDZE 1269 Apt Elev 1276
--	------------------------	---

RNAV (GPS) RWY 3

EPHRATA MUNI (EPH)

RNP APCH.

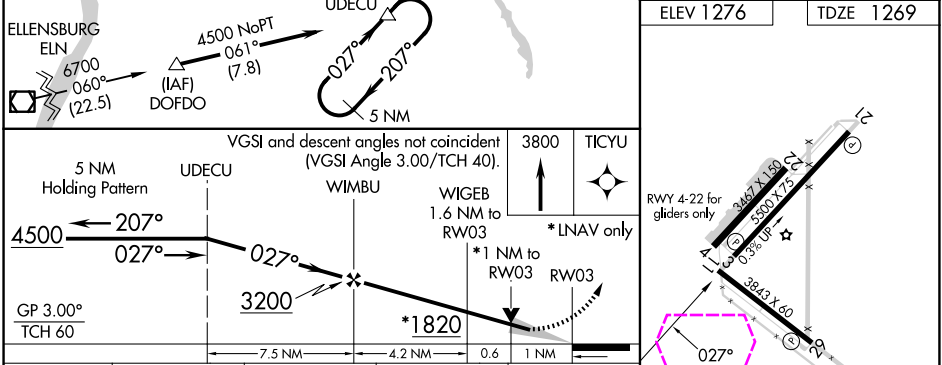
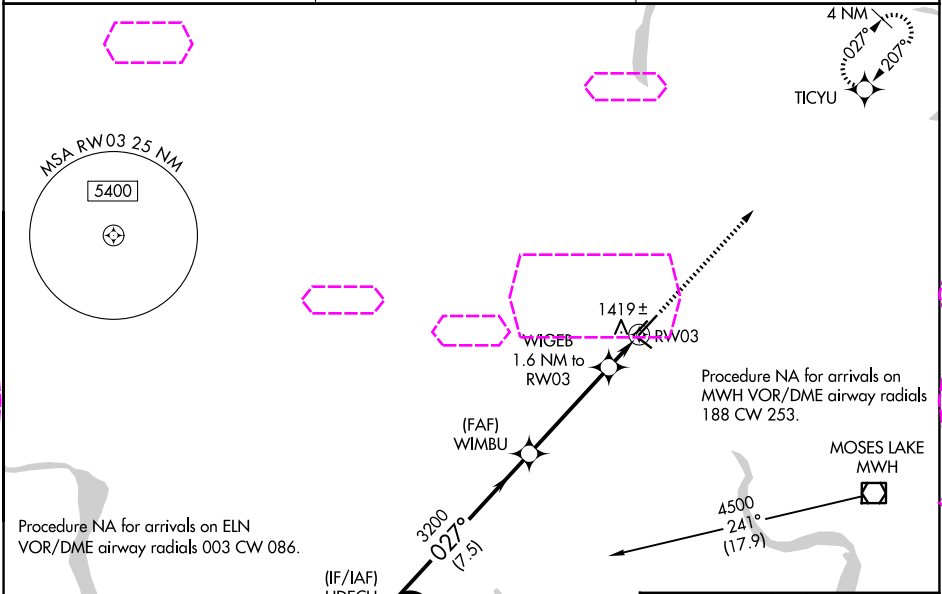
▼

▲

For uncompensated Baro-VNAV systems, LNAV/VNAV NA below -17°C or above 46°C. VDP and Baro-VNAV NA when using Moses Lake/Grant County Intl altimeter setting. When local altimeter setting not received, use Moses Lake/Grant County Intl altimeter setting and increase all DA/MDA 40 feet and LNAV Cat C and D visibility ¼ SM.

MISSED APPROACH: Climb to 3800 direct TICYU and hold.

ASOS 135.775	GRANT COUNTY APP CON * 126.4 379.95	UNICOM 122.8 (CTAF) 0
------------------------	---	---------------------------------



CATEGORY	A	B	C	D
LPV DA	1519-1 250 (300-1)			
LNAV/VNAV DA	1689-1½ 420 (500-1½)			
LNAV MDA	1680-1 411 (500-1)	1680-1¼ 411 (500-1¼)		

REIL Rwy 3, 11, 21 and 29 0

MIRL Rwy 3 11-29 and 3-21 0

NW-1, 10 JUL 2025 to 07 AUG 2025

NW-1, 10 JUL 2025 to 07 AUG 2025

EPHRATA, WASHINGTON

Orig-B 18JUL19

47°18'N-119°31'W

RNAV (GPS) RWY 3