

EPHRATA, WASHINGTON

AL-138 (FAA)

25163

WAAS CH 82308 W21A	APP CRS 207°	Rwy Ldg TDZE 1276 Apt Elev 1276
--	------------------------	---

RNAV (GPS) RWY 21

EPHRATA MUNI (EPH)

RNP APCH.

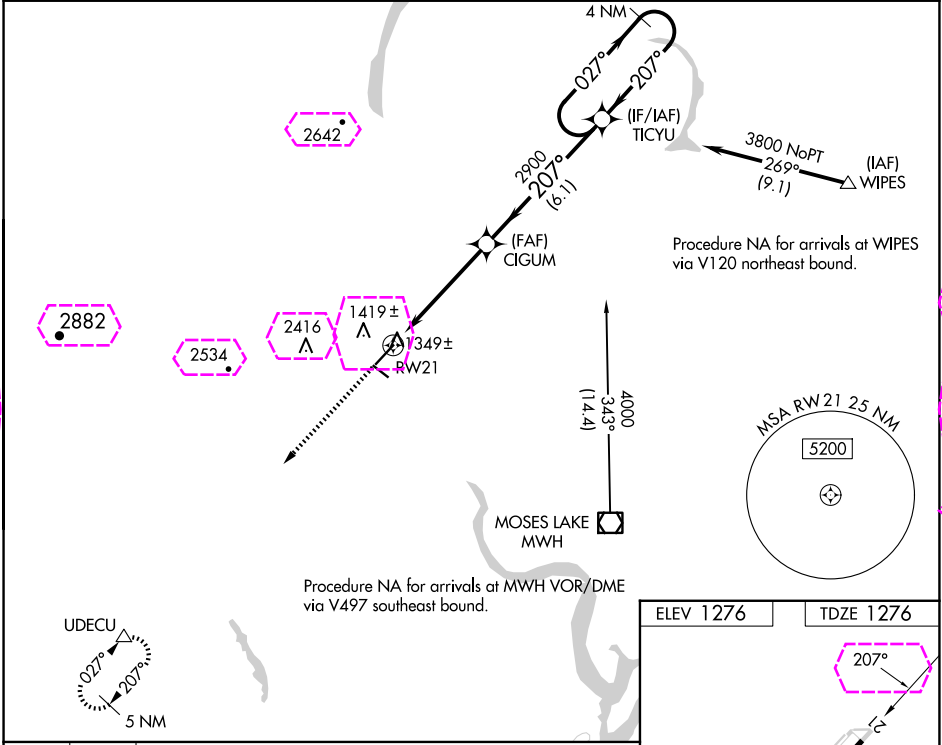
▼

▲

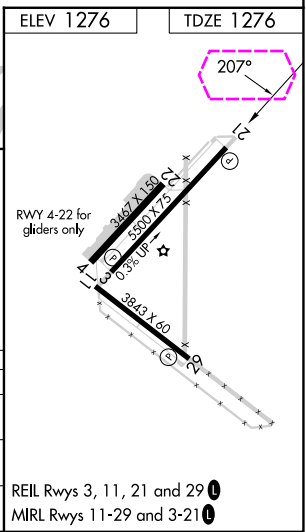
For uncompensated Baro-VNAV systems, LNAV/VNAV NA below -17°C or above 46°C. VDP and Baro-VNAV NA when using Moses Lake/Grant County Intl altimeter setting. When local altimeter setting not received, use Moses Lake/Grant County Intl altimeter setting and increase all DA/MDA 40 feet; increase visibility LPV all Cats, and LNAV Cats C and D ¼ SM.

MISSED APPROACH: Climb to 4500 direct UDECU and hold.

ASOS 135.775	GRANT COUNTY APP CON * 126.4 379.95	UNICOM 122.8 (CTAF) 0
------------------------	---	---------------------------------



4500	UDECU	VGSI and RNAV glidepath not coincident (VGSI Angle 3.00/TCH 40).			
*LNAV only	*2.2 NM to RWY 21	CIGUM	TICYU	4 NM Holding Pattern	3800
2.2 NM		2.7 NM	6.1 NM	GP 3.00°	TCH 51
CATEGORY	A	B	C	D	
LPV DA	1526-3/4 250 (300-3/4)				
LNAV/VNAV DA	2171-4 895 (900-4)				
LNAV MDA	2020-1 744 (800-1)	2020-1 744 (800-1 1/4)	2020-2 744 (800-2 1/4)	2020-2 744 (800-2 1/2)	



EPHRATA, WASHINGTON

Orig-B 18JUL19

47°18'N-119°31'W

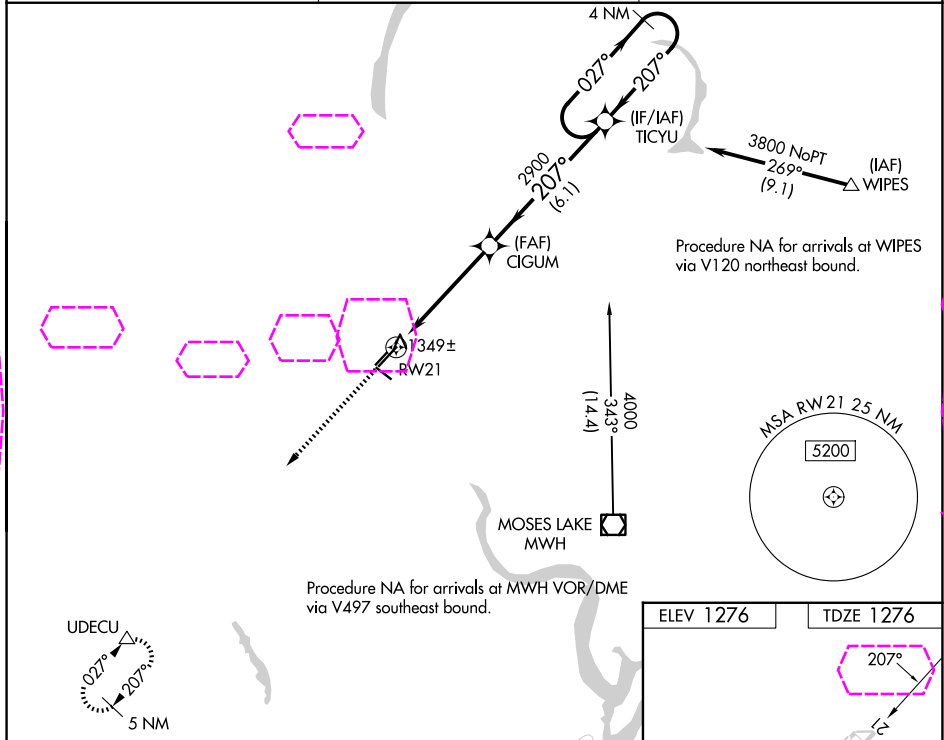
EPHRATA MUNI (EPH)

RNAV (GPS) RWY 21

RNAV (GPS) RWY 21
EPHRATA MUNI (EPH)

MISSED APPROACH: Climb to 4500 direct UDECU and hold.

ASOS 135,775	GRANT COUNTY APP CON ★ 126.4 379.95	UNICOM 122.8 (CTAF) 0
------------------------	---	--



4500 ↑ UDECU △		VGS1 and RNAV glidepath not coincident (VGS1 Angle 3.00°/TCH 40°).		4 NM Holding Pattern	
*RNAV only RW21		*2.2 NM to RW21		TICYU 027° → 3800 ← 207°	
2.2 NM		2.7 NM		6.1 NM	
CIGUM		207°		2900	
GP 3.00° TCH 51					
CATEGORY	A	B	C	D	
LPV DA	1526- ³ / ₄ 250 (300- ³ / ₄)				
RNAV/ VNAV DA	2171-4 895 (900-4)				
RNAV MDA	2020-1 744 (800-1)	2020-1 ¹ / ₄ 744 (800-1 ¹ / ₄)	2020-2 ¹ / ₄ 744 (800-2 ¹ / ₄)	2020-2 ¹ / ₂ 744 (800-2 ¹ / ₂)	

