

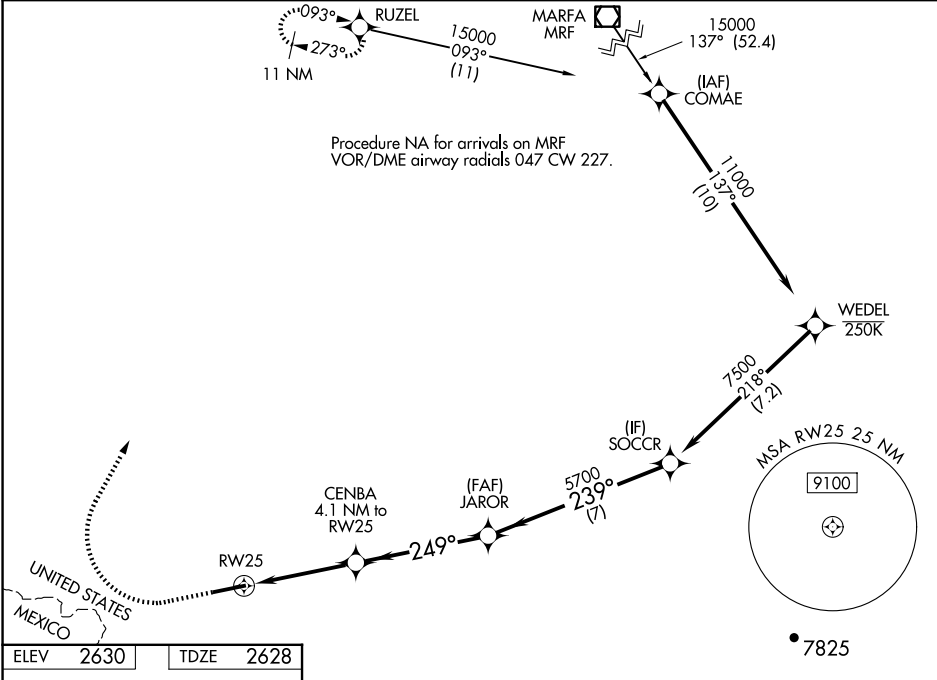
WAAS CH 72456 W25B	APP CRS 249°	Rwy Idg TDZE Apt Elev	6501 2628 2630
--	------------------------	-----------------------------	---

RNAV (GPS) Y RWY 25

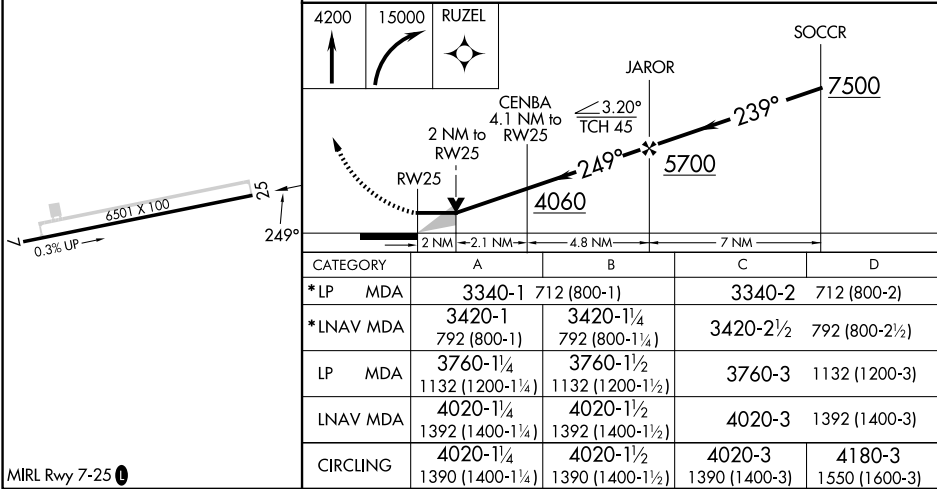
LAJITAS INTL (T89)

RNP APCH - GPS.	MISSED APPROACH: Climb to 4200 then climbing right turn to 15000 direct RUZEL and hold, continue climb-in-hold to 15000. *MISSED APPROACH requires minimum climb of 237 feet per NM to 5800.
<div><div></div><div></div></div> Circling NA south of Rwy 7-25. When local altimeter setting not received, procedure NA.	

AWOS-3 119.275	ALBUQUERQUE CENTER 135.875 292.15	UNICOM 122.7 (CTAF) 0
--------------------------	---	---------------------------------



ELEV 2630	TDZE 2628
------------------	------------------



MIRL Rwy 7-25 0

LAJITAS, TEXAS
Orig 26DEC24

LAJITAS INTL (T89)

29°17'N-103°41'W

RNAV (GPS) Y RWY 25

SC-3, 10 JUL 2025 to 07 AUG 2025

SC-3, 10 JUL 2025 to 07 AUG 2025