

APP CRS
086°

Rwy Idg
TDZE
2608

Apt Elev
2630

RNAV (GPS) RWY 7

LAJITAS INTL (T89)

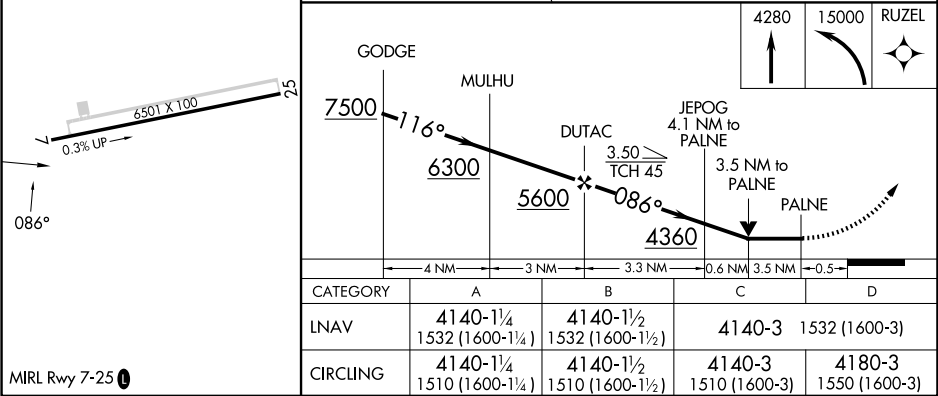
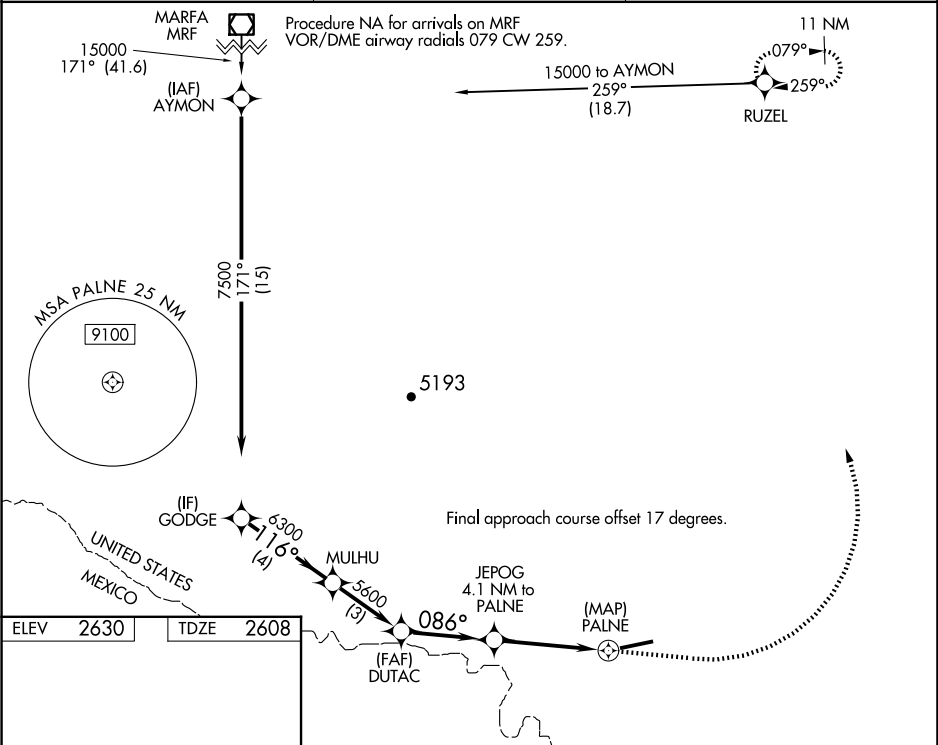
RNP APCH - GPS.

▼

Rwy 7 helicopter visibility reduction below ¾ SM NA. When local altimeter setting not received, use Presidio Lely Intl altimeter setting and increase all MDA 140 feet. VDP NA when using Presidio Lely Intl altimeter setting. Circling NA south of Rwy 7-25.

MISSED APPROACH: Climb to 4280 then climbing left turn to 15000 direct RUZEL and hold, continue climb in hold to 15000.

AWOS-3 119.275	ALBUQUERQUE CENTER 135.875 292.15	UNICOM 122.7 (CTAF) 0
--------------------------	---	---------------------------------



MIRL Rwy 7-25 0