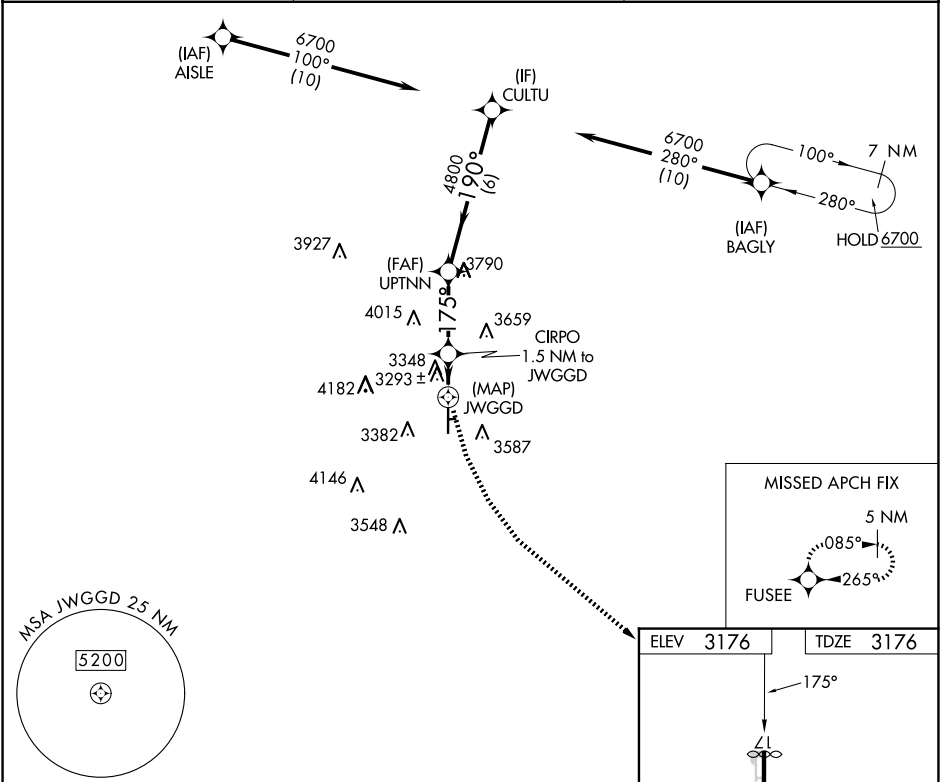


APP CRS <b>175°</b>	Rwy Idg	<b>5086</b>
	TDZE	<b>3176</b>
	Apt Elev	<b>3176</b>

RNAV (GPS) RWY 17

LUBBOCK EXEC AIRPARK (F82)

RNP APCH - GPS.		MISSED APPROACH: Climbing left turn to 5000 direct FUSEE and hold.
NA	Use LBB altimeter setting. Rwy 17 helicopter visibility reduction below 1 SM NA. Circling NA east of Rwy 17-35.	
LBB ASOS <b>125.3 270.275</b>	LUBBOCK APP CON <b>119.2 351.8</b>	UNICOM <b>122.8 (CTAF)</b>



<div><div>CULTU</div><div>UPTNN</div><div>CIRPO 1.5 NM to JWGGD</div><div>JWGGD</div></div> <div><div>6700</div><div>4800</div><div>3860</div></div> <div><div>190°</div><div>175°</div></div> <div><div>6 NM</div><div>3 NM</div><div>1.5 NM</div><div>0.4</div></div>					ELEV 3176   TDZE 3176	
<div><div>5000</div><div>FUSEE</div></div> <div><div>1524 X 110</div><div>5144 X 70</div><div>25</div><div>0.5% UP</div></div> <div><div>35</div></div>					HIRL Rwy 17-35	
CATEGORY	A	B	C	D		
LNVA MDA	3640-1	464 (500-1)	3640-1 3/8 464 (500-1 3/8)	NA		
CIRCLING	3700-1 524 (600-1)	3740-1 564 (600-1)	4580-3 1404 (1500-3)	NA		