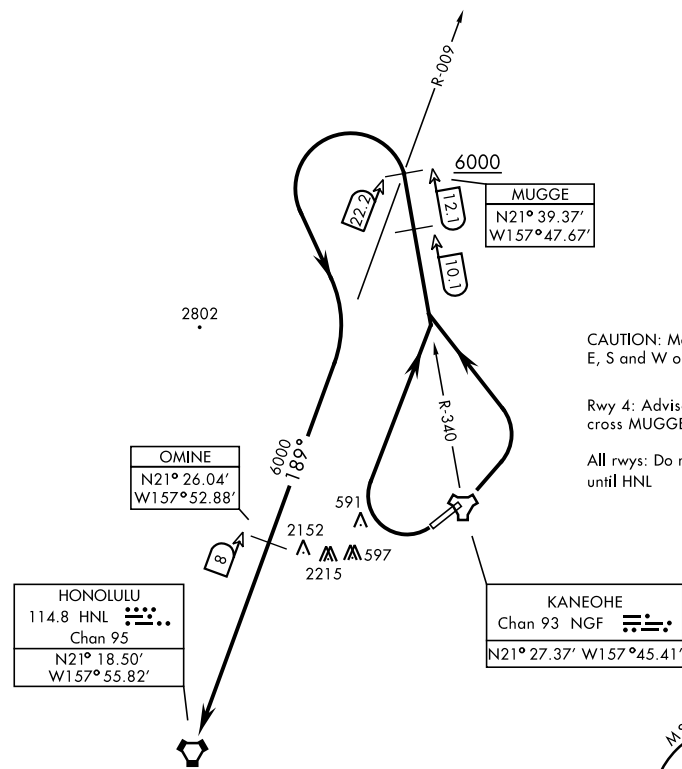


MUGGE ONE DEPARTURE (OBSTACLE) (MUGGE1•HNL)

MOKAPU POINT, OAHU I, HAWAII

ATIS 284.5	Rwy	Knots	60	120	180	240	300	360
CLNC DEL	22	V/V(fpm)	975	1950	2925	4900	4875	5850
294.7								
GND CON								
338.35								
KANEOHE TOWER								
120.7 (CTAF) 360.2								
KANEOHE APP/DEP CON								
125.0 263.5								

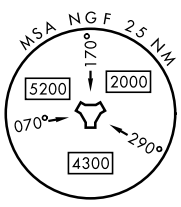
Minimum Climb Rate to 4500



CAUTION: Mountainous terrain E, S and W of airfield.

Rwy 4: Advise ATC if unable to cross MUGGE at or above 6000

All rwys: Do not exceed 250 KIAS until HNL



TA 18,000

DEPARTURE ROUTE DESCRIPTION

TAKEOFF RWY 4: Turn left to intercept NGF TACAN R-340 to MUGGE, then intercept HNL VORTAC R-009 to HNL. Cross MUGGE at or above 6000.

TAKEOFF RWY 22: Turn right as soon as practicable to intercept NGF TACAN R-340 to MUGGE, then intercept HNL VORTAC R-009 to HNL.

PAC, 12 JUN 2025 to 07 AUG 2025

PAC, 12 JUN 2025 to 07 AUG 2025