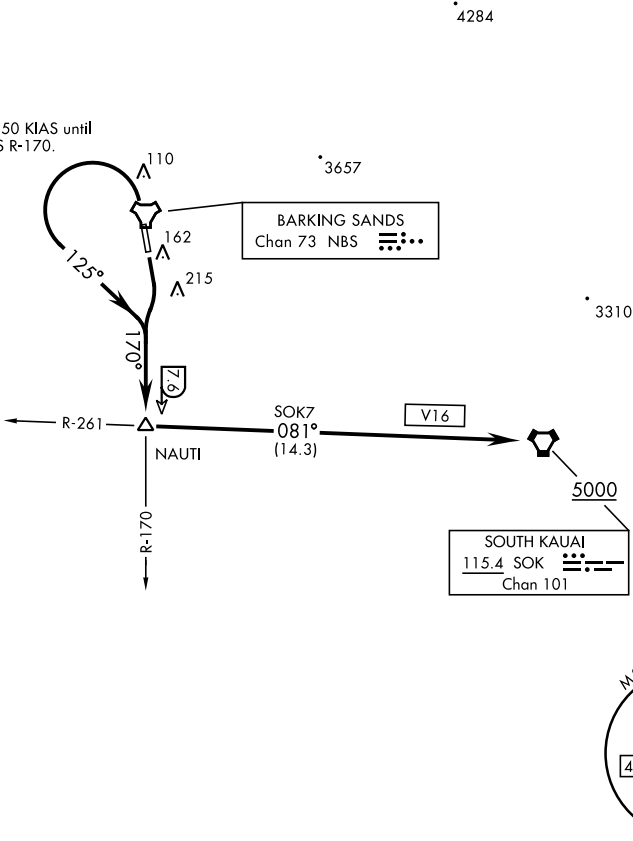


BARKING SANDS TOWER ★  
126.2 360.2  
HCF APP  
126.5 269.4

Do not exceed 250 KIAS until  
intercepting NBS R-170.



DEPARTURE ROUTE DESCRIPTION

TAKEOFF RWY 16: Climb on heading 160°, then right turn to intercept NBS TACAN R-170 to NAUTI, then turn left to intercept SOK VORTAC R-261 to SOK. Maintain 5000 or higher as assigned.

TAKEOFF RWY 34: Climb on heading 340°, then left turn to intercept NBS TACAN R-170 to NAUTI, then turn left to intercept SOK VORTAC R-261 to SOK. Maintain 5000 or higher as assigned.