

RNAV (GPS) RWY 16

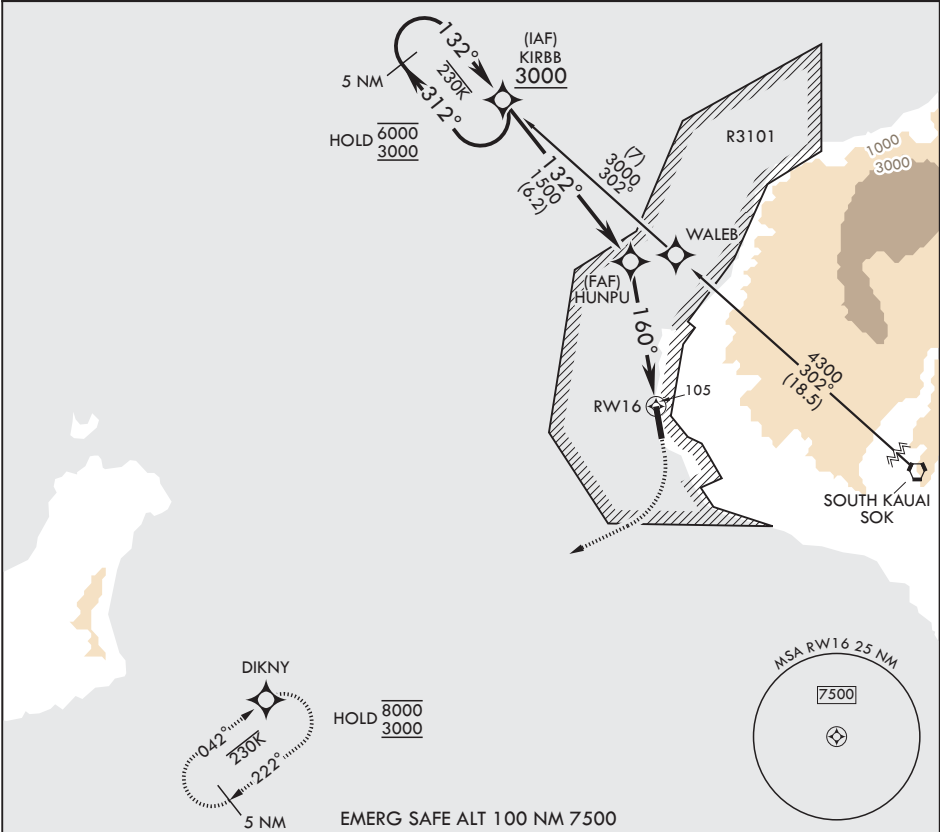
APCH CRS	Rwy Idg	6002
160°	TDZE	23
	Arprt Elev	23

- (USN)

BARKING SANDS PMRF (PHBK)

RNP APCH	MISSED APPROACH: Climb to 550 then climbing right turn to 3000 direct DIKNY and hold.
* Circling not authorized E of Rwy 16-34.	

ATIS★ 128.0	HCF CENTER 126.5 269.4	TOWER★ 126.2 360.2	GND CON★ 124.2 340.2	UNICOM 122.8
----------------	---------------------------	-----------------------	-------------------------	-----------------



KIRBB		550	3000	DIKNY	ELEV 23	TDZE 23
6000 3000		312°	132°	132°	160°	160°
HUNPU		1500	160°	1.2 NM to RWY 16	BCN TWR	91
TCH 40		3.06°	4.4 NM	6002 x 150	34	
CATEGORY	A	B	C	D		
LNAV MDA	460-1 437 (500-1)	480-1 457 (500-1)	460-1¼ 437 (500-1¼)	480-1½ 457 (500-1½)	580-2 557 (600-2)	
CIRCLING*	460-1 437 (500-1)	480-1 457 (500-1)	460-1¼ 437 (500-1¼)	480-1½ 457 (500-1½)	580-2 557 (600-2)	

RNAV (GPS) RWY 16

PAC, 12 JUN 2025 to 07 AUG 2025

PAC, 12 JUN 2025 to 07 AUG 2025