

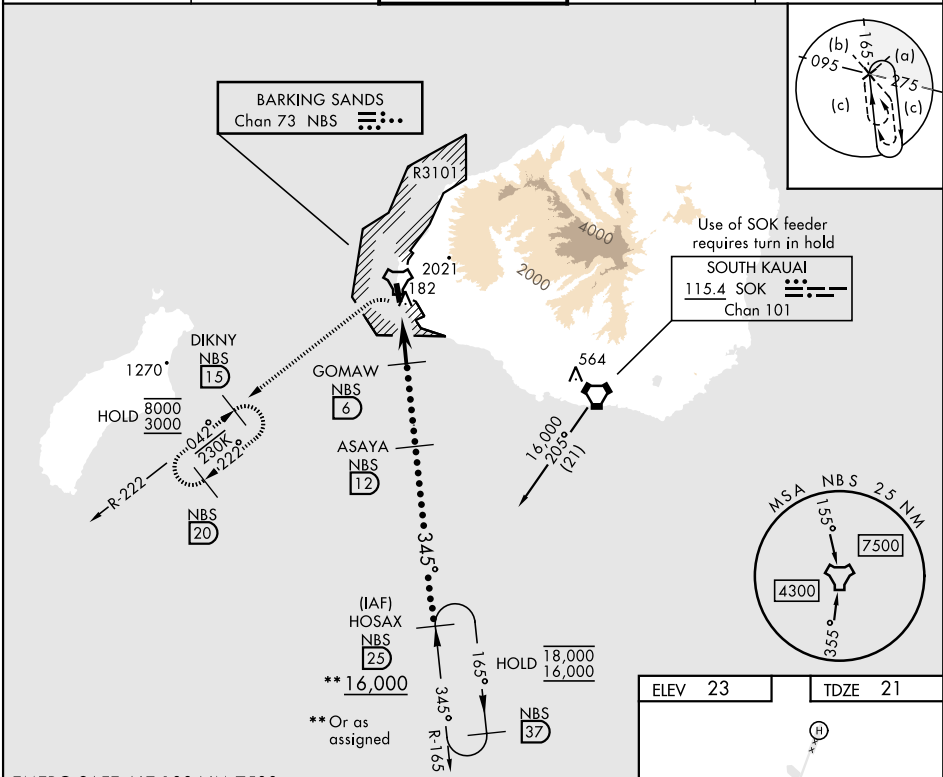
TACAN NBS Chan 73	APCH CRS 345°	Rwy Idg TDZE Arpt Elev	6002 21 23	[USN]	BARKING SANDS PMRF (PHBK)
----------------------	------------------	------------------------------	------------------	-------	---------------------------

▼

* Circling not authorized E of Rwy 16-34.

MISSED APPROACH: Climbing left turn to 3000 on heading 177° and NBS TACAN R-222 to DIKNY and hold.

ATIS ★ 128.0	HCF APP 126.5 269.4	TOWER ★ 126.2 360.2	GND CON ★ 124.2 340.2	UNICOM 122.8
-----------------	------------------------	------------------------	--------------------------	-----------------



EMERG SAFE ALT 100 NM 7500				
3000 NBS R-222	DIKNY NBS 15			
NBS TACAN	MAPIE NBS 1.9	NBS 2.6	GOMAW NBS 6	ASAYA NBS 12
				HOSAX R-165 NBS 25
				16,000 ** Or as assigned
				3000
				2.94° TCH 40
CATEGORY	C	D	E	
S-34	460-1¼	439 (500-1¼)		
CIRCLING*	480-1½ 457 (500-1½)	580-2	557	(600-2)