

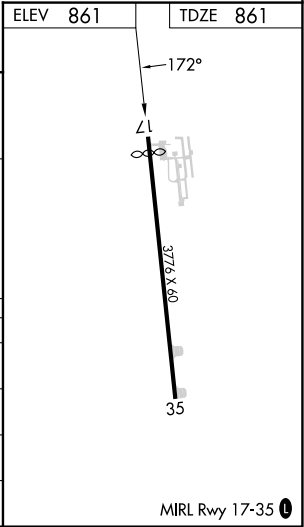
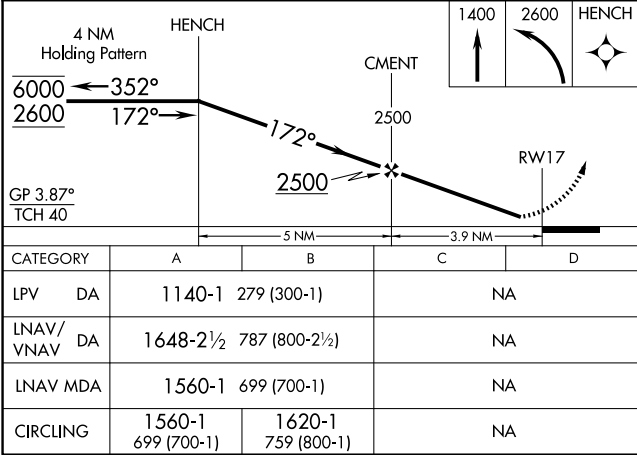
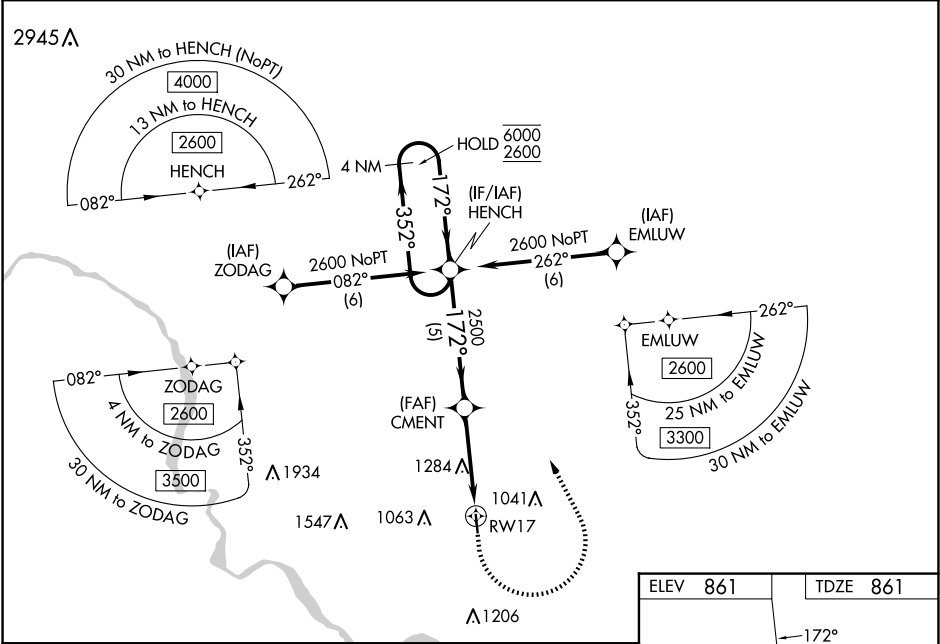
WAAS CH 52102 W17A	APP CRS 172°	Rwy ldg 3532 TDZE 861 Apt Elev 861
--	------------------------	---

RNAV (GPS) RWY 17

MARION (C17)

RNP APCH - GPS.	<div><div>▼</div><div>▲ NA</div><div>Baro-VNAV NA. Straight-in Rwy 17, NA at night. Circling NA for Cat B west of Rwy 17/35. Use The Eastern Iowa altimeter setting; when not received, use Monticello Rgnl altimeter setting; increase LPV DA to 1162; increase LNAV/VNAV DA to 1670; increase all MDAs 40 feet. For uncompensated Baro-VNAV system, LNAV/VNAV NA below -6°C or above 54°C. Rwy 17, helicopter visibility reduction below 1 SM NA.</div></div>	MISSED APPROACH: Climb to 1400 then climbing left turn to 2600 direct HENCH and hold.
-----------------	---	---

CID ASOS 124.15	CEDAR RAPIDS APP CON ★ 134.05 266.8	UNICOM 122.7 (CTAF) 0
---------------------------	---	---------------------------------



NC-3, 10 JUL 2025 to 07 AUG 2025

NC-3, 10 JUL 2025 to 07 AUG 2025