

APP CRS
178°

Rwy Idg
TDZE
Apt Elev

NA
NA
24

RNAV (GPS)-A

CHAMBERS COUNTY/WINNIE STOWELL (T9Ø)

RNP APCH - GPS.

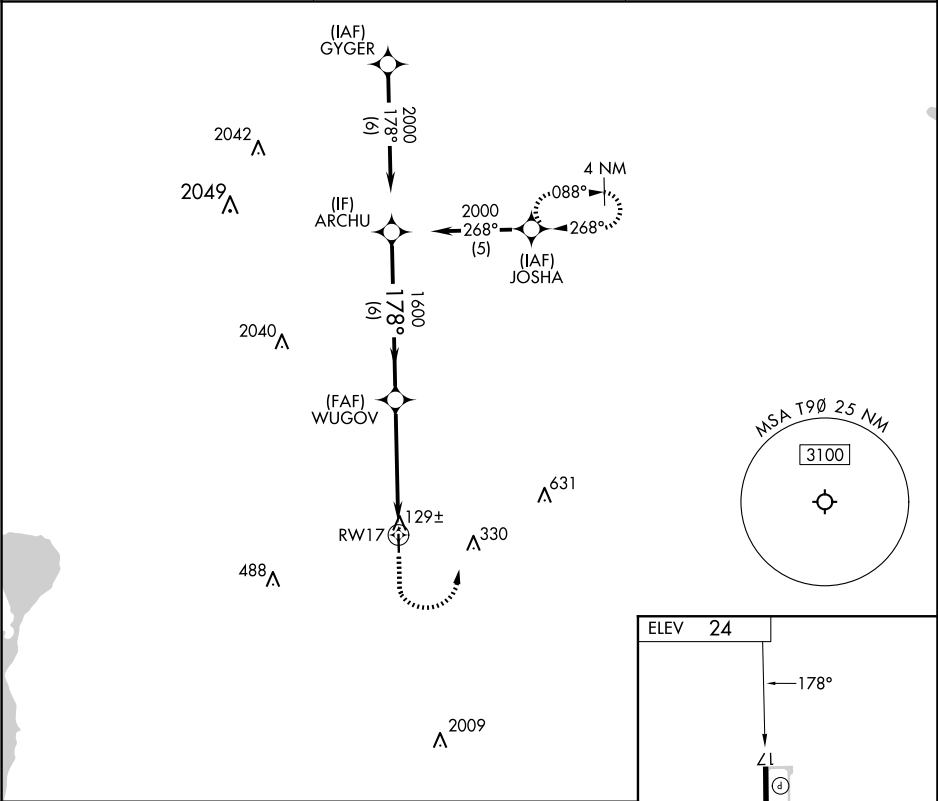
Procedure NA at night. Rwy 17 and 35 helicopter visibility reduction below 1 SM NA. Use Beaumont altimeter setting; when not received, use Liberty altimeter setting and increase all MDAs 20 feet.

MISSED APPROACH: Climb to 900 then climbing left turn to 2500 direct JOSHUA and hold.

BMT AWOS-3PT
118.425

HOUSTON APP CON
121.3 377.1

CTAF
122.9



ARCHU

2000

178°

WUGOV

1600

3.00° TCH 40

RW17

900

2500

JOSHUA

CATEGORY

A

B

C

D

CIRCLING

480-1

456 (500-1)

NA

ELEV 24

178°

3600 X 75

35

MIRL Rwys 17-35