

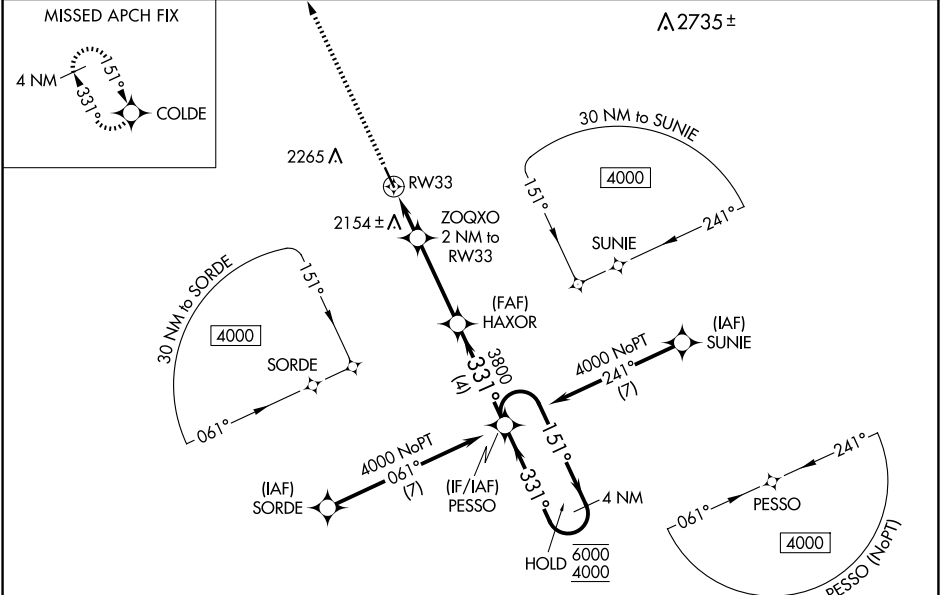
WAAS CH 62947 W33A	APP CRS 331°	Rwy Ldg TDZE 2034 Apt Elev 2034
--	------------------------	---

RNAV (GPS) RWY 33

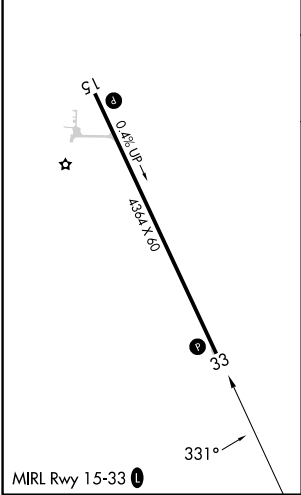
ASHLEY MUNI (ASY)

RNP APCH - GPS.	MISSED APPROACH: Climb to 4000 direct COLDE and hold.
-----------------	---

7L2 AWOS-3 118.175	MINNEAPOLIS CENTER 135.25 256.7	CTAF 122.9
------------------------------	---	----------------------



ELEV 2034	TDZE 2034
------------------	------------------



4000	COLDE	VGSI and RNAV glidepath not coincident (VGSI Angle 3.00/TCH 25).			
		ZOQXO 2 NM to RW33	HAXOR 3800	PESSO	4 NM Holding Pattern
		RW33			
		2720	3800	6000	4000
		2 NM	3.4 NM	4 NM	
CATEGORY	A	B	C	D	
LPV DA	2360-1 326 (400-1)				
LNAV/VNAV DA	2410-1 376 (400-1)				
LNAV MDA	2540-1	506 (600-1)	2540-1 $\frac{3}{8}$	506 (600-1 $\frac{3}{8}$)	
CIRCLING	2600-1 566 (600-1)	2700-1 666 (700-1)	2700-1 $\frac{3}{4}$ 666 (700-1 $\frac{3}{4}$)	2800-2 $\frac{1}{2}$ 766 (800-2 $\frac{1}{2}$)	