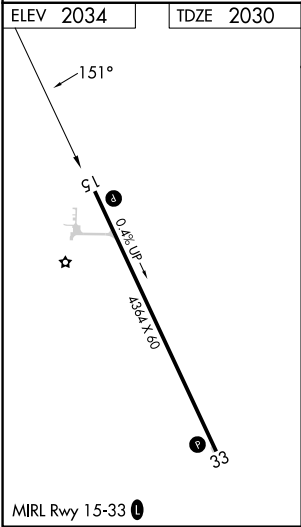
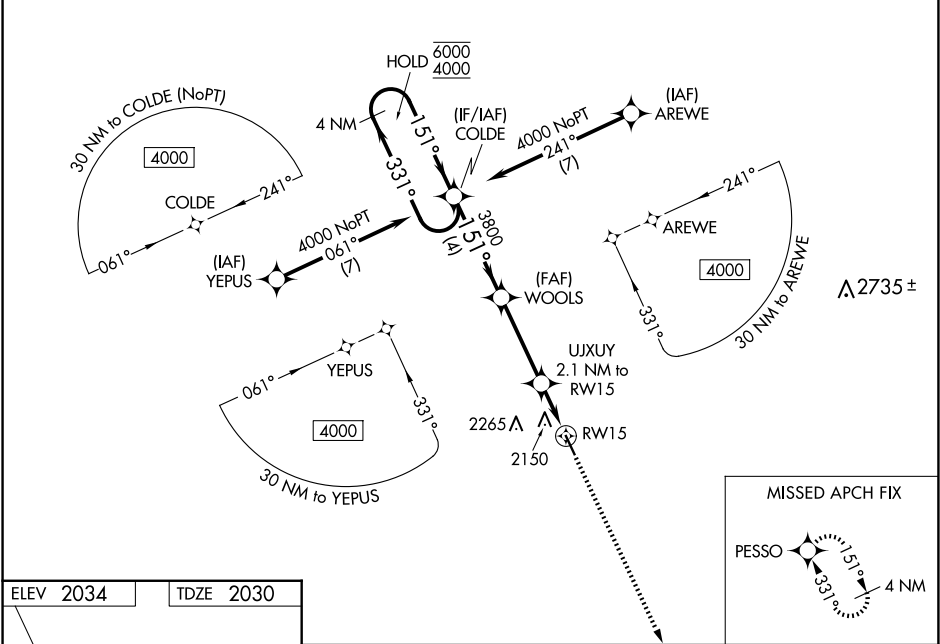


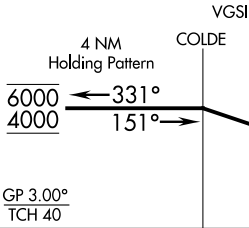
WAAS CH 58047 W15A	APP CRS 151°	Rwy Ldg 4364 TDZE 2030 Apt Elev 2034
--	------------------------	---

RNAV (GPS) RWY 15
ASHLEY MUNI(ASY)

RNP APCH - GPS.	
<div><div><div>▼</div><div>NA</div></div><div>Baro-VNAV NA. Rwy 15 helicopter visibility reduction below ¾ SM NA. Use 7L2 altimeter setting; when not received, use MBG altimeter setting and increase LPV DA to 2448 feet and all visibilities ¼ SM. Increase LNAV/VNAV DA to 2477 feet and all visibilities ¼ SM. Increase all MDAs 40 feet and LNAV visibility Cat C/D ¼ SM, and Circling visibility Cat C ¼ SM.</div></div>	MISSED APPROACH: Climb to 4000 direct PESSO and hold.

7L2 AWOS-3 118.175	MINNEAPOLIS CENTER 135.25 256.7	CTAF 122.9
------------------------------	---	----------------------



VGSI and RNAV glidepath not coincident (VGSI Angle 3.00/TCH 27).				4000	PESSO
 <p>4 NM Holding Pattern</p> <p>6000 ← 331°</p> <p>4000 → 151°</p> <p>COLDE</p> <p>WOOLS</p> <p>3800</p> <p>UJXUY 2.1 NM to RW15</p> <p>RW15</p> <p>2720</p> <p>GP 3.00°</p> <p>TCH 40</p> <p>4 NM</p> <p>3.4 NM</p> <p>2.1 NM</p>				4000	PESSO
CATEGORY	A	B	C	D	
LPV DA	2408-1 378 (400-1)				
LNAV/VNAV DA	2437-1½ 407 (500-1½)				
LNAV MDA	2540-1 510 (600-1)		2540-1¾ 510 (600-1¾)		
CIRCLING	2600-1 566 (600-1)	2700-1 666 (700-1)	2700-1¾ 666 (700-1¾)	2800-2½ 766 (800-2½)	

NC-1, 10 JUL 2025 to 07 AUG 2025

NC-1, 10 JUL 2025 to 07 AUG 2025